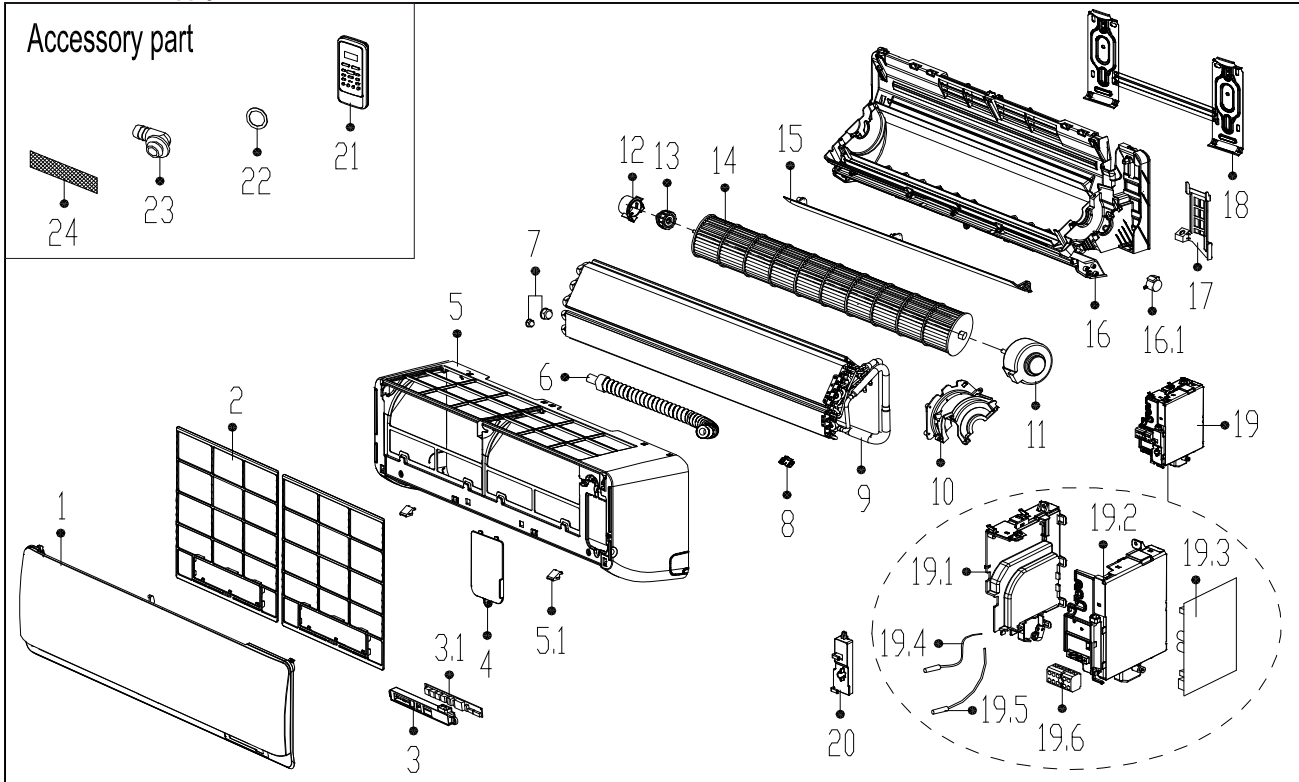
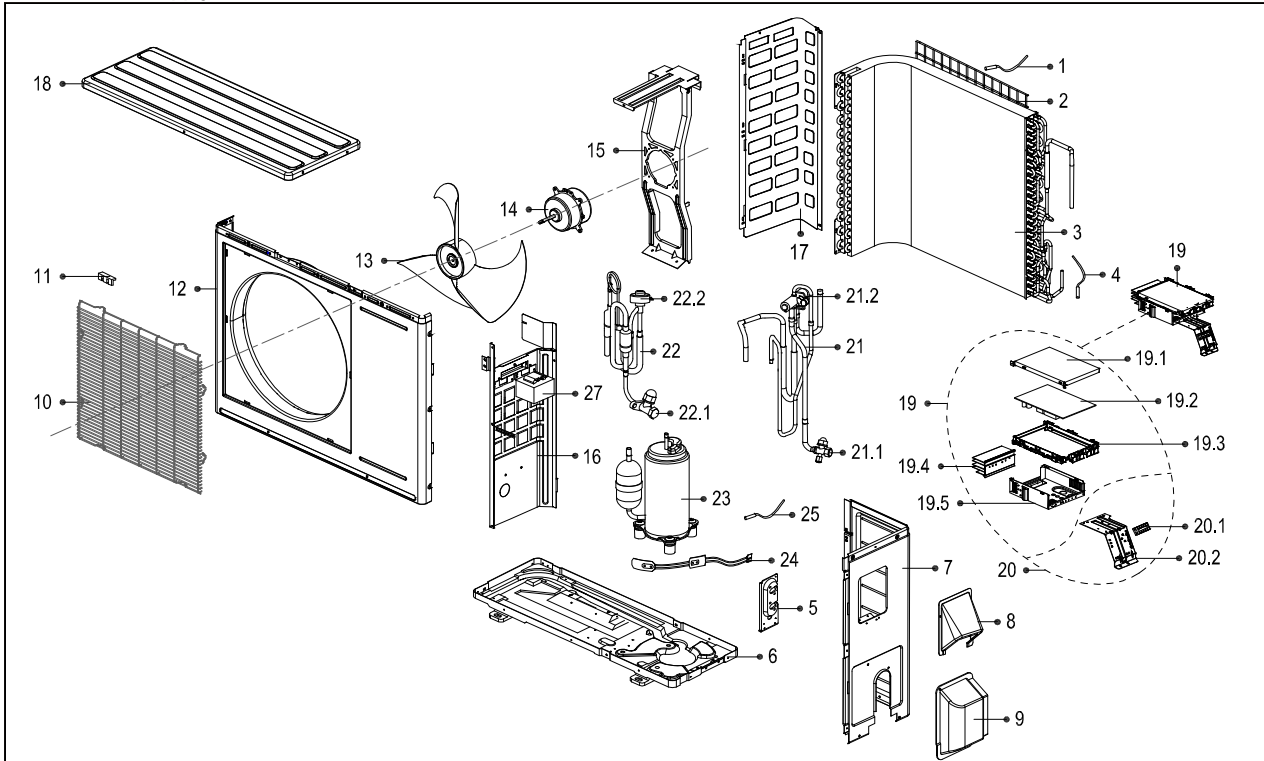


Model Number WQ009GMFI22HLD
ProdCode : 220032308590
Power Supply : 230V~ 60Hz 1Phase



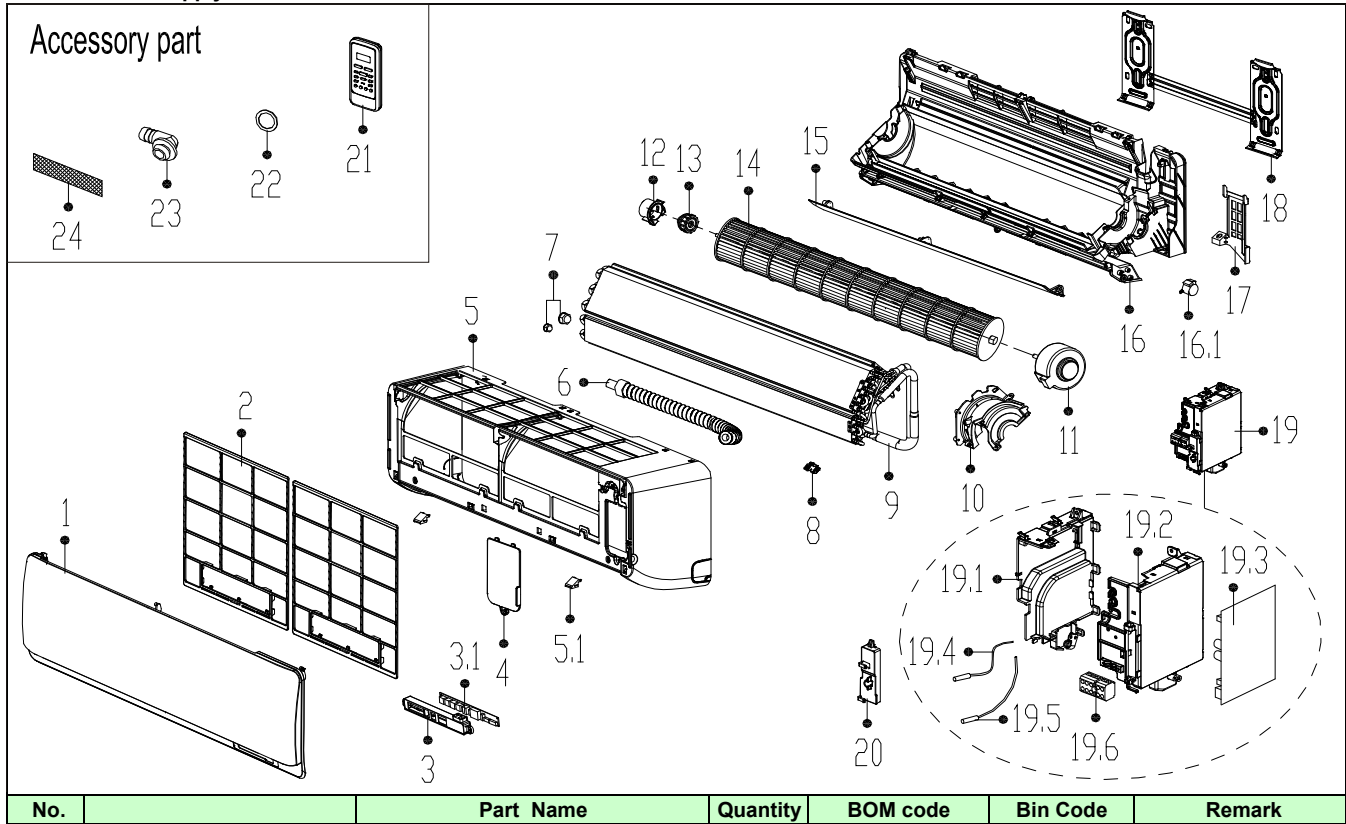
No.	Part Name	Quantity	BOM code	Bin Code	Remark
1	Panel assembly	1	2011325A6027	45.90	
2	Air filter	2	201132590962	4.70	
3	Display box assembly	1	203332390972	22.50	
3.1	Display board assembly	1	201332391249	20.60	
4	Cover of electrical equipment	1	201119901024	3.30	
5	Panel frame assembly	1	201132591059	59.80	
5.1	Screw cap	2	201119900950	0.20	
6	Drain hose	1	201101020038	3.70	
7	Pipe nut	1	201600330002	0.40	
7	Pipe nut	1	201600330001	0.20	
8	Fix clamp of temperature sensor	1	201102000305	0.20	
9	Evaporator assembly	1	201532590453	380.70	
10	Fan motor cover	1	201132490127	3.70	
11	Brushless DC Motor	1	202400370022	247.60	
12	Bearing holder	1	201119900952	0.50	
13	Bearing base	1	202719900606	1.30	
14	Cross flow fan	1	201100200054	40.60	
15	Horizontal louver	1	201132590956	10.20	
16	Chassis assembly	1	201132590963	107.90	
16.1	Louver motor	1	202400200031	10.60	
17	Pipe clamp board	1	201119900949	0.70	
18	Installation plate	1	201232590037	9.60	
19	Electronic control box assembly	1	203332391073	169.10	
19.1	Electronic control box I	1	201132490125	5.90	
19.2	Electronic control box II	1	201132490139	8.60	
19.3	Indoor main control board assembly	1	201332391485	135.40	
19.4	Ambient temperature sensor assembly	1	202432390005	3.00	
19.5	Pipe temperature sensor assembly	1	202301300584	4.30	
19.6	Wire joint	1	202301450119	5.40	
20	Cover of electronic control box	1	201132490126	0.80	
21	Remote Controller	1	2033550A8810	65.20	
22	Seal ring	1	202720090001	0.20	
23	Drain joint	1	201101020011	0.30	
24	Air freshening filter remote holder	1	201131410703	0.90	
			201155000552	3.00	

Model Number YN009GMFI22RPD
ProdCode : 220037306080
Power Supply : 230V~ 60Hz 1Phase



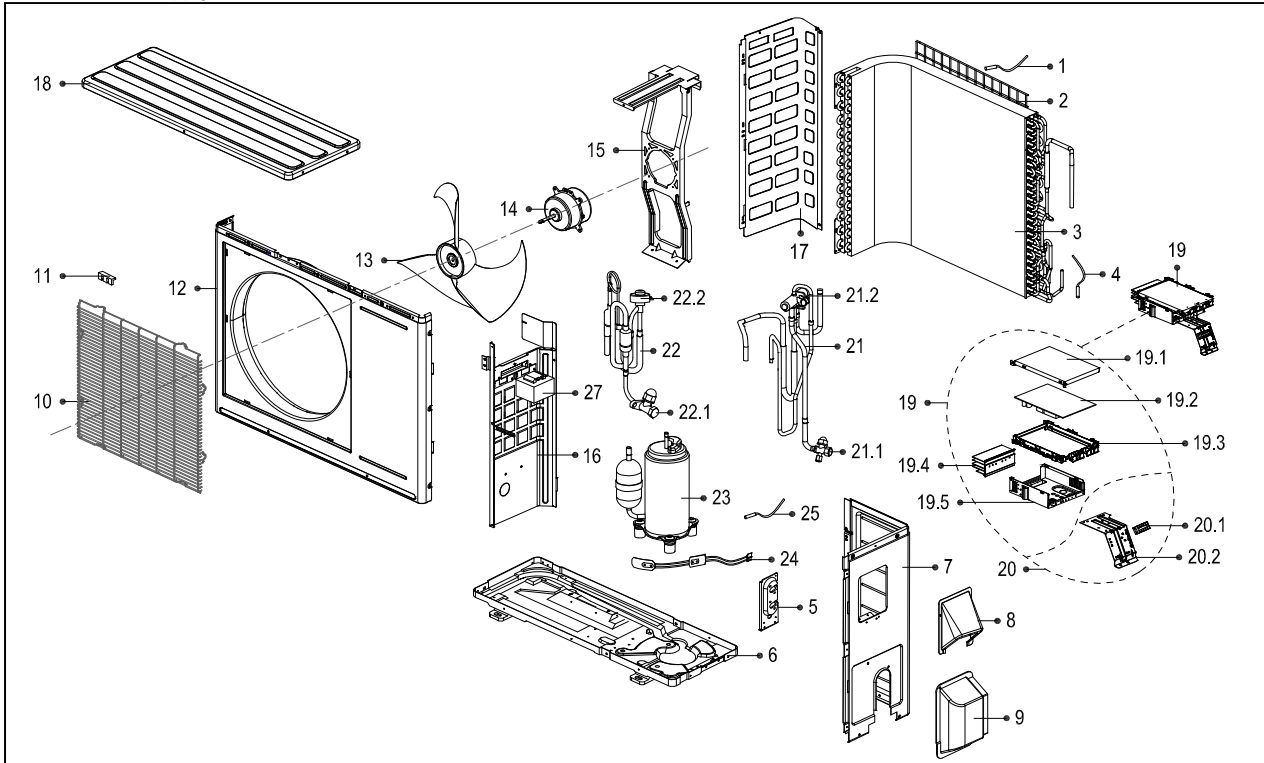
No.	Part Name	Quantity	BOM code	Bin Code	Remark
1	Ambient temperature sensor assembly	1	202301300115	3.90	
2	Rear net	1	201237490045	3.70	
3	Condenser assembly	1	201537690004	414.10	
4	Pipe temperature sensor assembly	1	202440500004	4.70	
5	Valve plate	1	201237200299	5.10	
6	Chassis assembly	1	201237590105	80.30	
7	Right clapboard assembly	1	201237590080	39.20	
8	Big handle	1	201237390104	5.70	
9	Water collector	1	201137400000	6.40	
10	Air outlet grille	1	201237390105	21.90	
11	Clamp of front net	6	201135110801	0.20	
12	Front panel	1	201237400394	77.10	
13	Axial flow fan	1	201100390002	52.40	
14	Brushless DC Motor	1	202400300060	259.30	
15	Supporter assembly of fan motor	1	201237390026	22.60	
16	Partition board assembly	1	201237500259	22.60	
17	Left supporter	1	201237400401	24.30	
18	Top cover assembly	1	201237400404	35.80	
19	Electronic control box assembly	1	203337390226	541.40	
19.1	Cover of electronic control box	1	201237300162	6.30	
19.2	Outdoor main control board assembly	1	201337390188	497.10	
19.3	Support of electronic control box	1	201137300162	5.00	
19.4	Radiator	1	202301990015	27.40	
19.5	Electronic installing box	1	201237300318	6.70	
20	Terminal board assembly	1	203337590049	49.30	
20.1	Wire joint	1	202301400256	22.90	
20.2	Terminal board	1	201237590046	5.50	
21	4-Ways valve assembly	1	201637391606	220.30	
21.1	Gas valve	1	201600720095	26.00	
21.2	4-Ways valve	1	201600600521	86.10	
22	Liquid valve assembly	1	201637391145	181.30	
22.1	Liquid valve	1	201600740523	17.70	
22.2	Electronic expansion valve assembly	1	201601300554	127.80	
23	Compressor	1	201400601510	1526.50	
24	Crankcase electric heater	1	202403100501	24.40	
25	Discharge temperature sensor assembly	1	202301310068	7.10	
27	Reactor	1	202301000867	45.10	

Model Number WQ012GMFI22HLD
ProdCode : 220032506930
Power Supply : 230V~ 60Hz 1Phase



No.	Part Name	Quantity	BOM code	Bin Code	Remark
1	Panel assembly	1	2011325A6027	45.90	
2	Air filter	2	201132590962	4.70	
3	Display box assembly	1	203332390972	22.50	
3.1	Display board assembly	1	201332391249	20.60	
4	Cover of electrical equipment	1	201119901024	3.30	
5	Panel frame assembly	1	201132591059	59.80	
5.1	Screw cap	2	201119900950	0.20	
6	Drain hose	1	201101020038	3.70	
7	Pipe nut	1	201600330003	0.40	
7	Pipe nut	1	201600330001	0.20	
8	Fix clamp of temperature sensor	1	201102000305	0.20	
9	Evaporator assembly	1	201532590458	383.90	
10	Fan motor cover	1	201132490127	3.70	
11	Brushless DC Motor	1	202400370022	247.60	
12	Bearing holder	1	201119900952	0.50	
13	Bearing base	1	202719900606	1.30	
14	Cross flow fan	1	201100200054	40.60	
15	Horizontal louver	1	201132590956	10.20	
16	Chassis assembly	1	201132590963	107.90	
16.1	Louver motor	1	202400200031	10.60	
17	Pipe clamp board	1	201119900949	0.70	
18	Installation plate	1	201232590037	9.60	
19	Electronic control box assembly	1	203332591105	169.10	
19.1	Electronic control box I	1	201132490125	5.90	
19.2	Electronic control box II	1	201132490139	8.60	
19.3	Indoor main control board assembly	1	201332591013	135.40	
19.4	Ambient temperature sensor assembly	1	202432390005	3.00	
19.5	Pipe temperature sensor assembly	1	202301300584	4.30	
19.6	Wire joint	1	202301450119	5.40	
20	Cover of electronic control box	1	201132490126	0.80	
21	Remote Controller	1	2033550A8810	65.20	
22	Seal ring	1	202720090001	0.20	
23	Drain joint	1	201101020011	0.30	
24	Air freshening filter	1	201131410703	0.90	

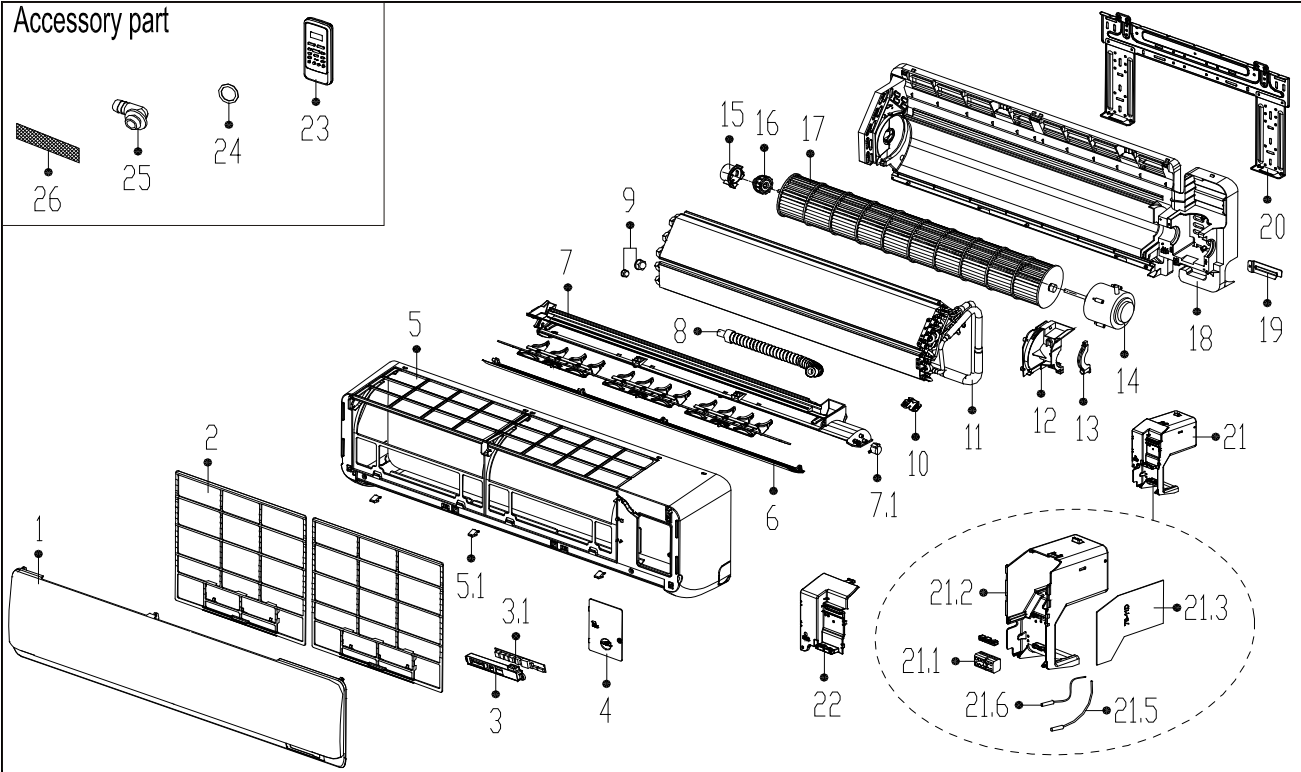
Model Number YN012GMFI22RPD
ProdCode : 220037505540
Power Supply : 230V~ 60Hz 1Phase



No.	Part Name	Quantity	BOM code	Bin Code	Remark
1	Ambient temperature sensor assembly	1	202301300115	3.90	
2	Rear net	1	201237490045	3.70	
3	Condenser assembly	1	201537690004	414.10	
4	Pipe temperature sensor assembly	1	202440500004	4.70	
5	Valve plate	1	201237200299	5.10	
6	Chassis assembly	1	201237590105	80.30	
7	Right clapboard assembly	1	201237590080	39.20	
8	Big handle	1	201237390104	5.70	
9	Water collector	1	201137400000	6.40	
10	Air outlet grille	1	201237390105	21.90	
11	Clamp of front net	6	201135110801	0.20	
12	Front panel	1	201237400394	77.10	
13	Axial flow fan	1	201100390002	52.40	
14	Brushless DC Motor	1	202400300060	259.30	
15	Supporter assembly of fan motor	1	201237390026	22.60	
16	Partition board assembly	1	201237500259	22.60	
17	Left supporter	1	201237400401	24.30	
18	Top cover assembly	1	201237400404	35.80	
19	Electronic control box assembly	1	203337590101	549.40	
19.1	Cover of electronic control box	1	201237300162	6.30	
19.2	Outdoor main control board assembly	1	201337590069	505.10	
19.3	Support of electronic control box	1	201137300162	5.00	
19.4	Radiator	1	202301990015	27.40	
19.5	Electronic installing box	1	201237300318	6.70	
20	Terminal board assembly	1	203337590049	49.30	
20.1	Wire joint	1	202301400256	22.90	
20.2	Terminal board	1	201237590046	5.50	
21	4-Ways valve assembly	1	201637591413	228.30	
21.1	Gas valve	1	201600720195	32.80	
21.2	4-Ways valve	1	201600600521	86.10	
22	Liquid valve assembly	1	201637391145	181.30	
22.1	Liquid valve	1	201600740523	17.70	
22.2	Electronic expansion valve assembly	1	201601300554	127.80	
23	Compressor	1	201400601510	1526.50	
24	Crankcase electric heater	1	202403100501	24.40	
25	Discharge temperature sensor assembly	1	202301310068	7.10	
27	Reactor	1	202301000867	45.10	

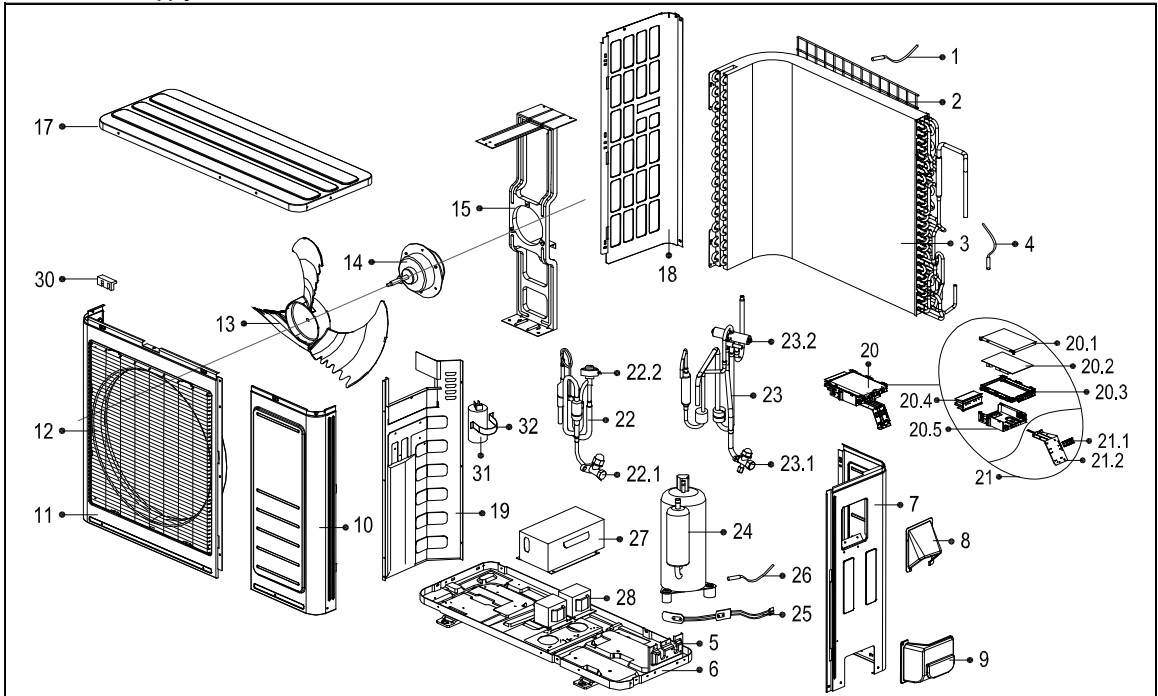
Model Number WQ018GMFI22HLD
ProdCode : 220032805730
Power Supply : 230V~ 60Hz 1Phase

Accessory part



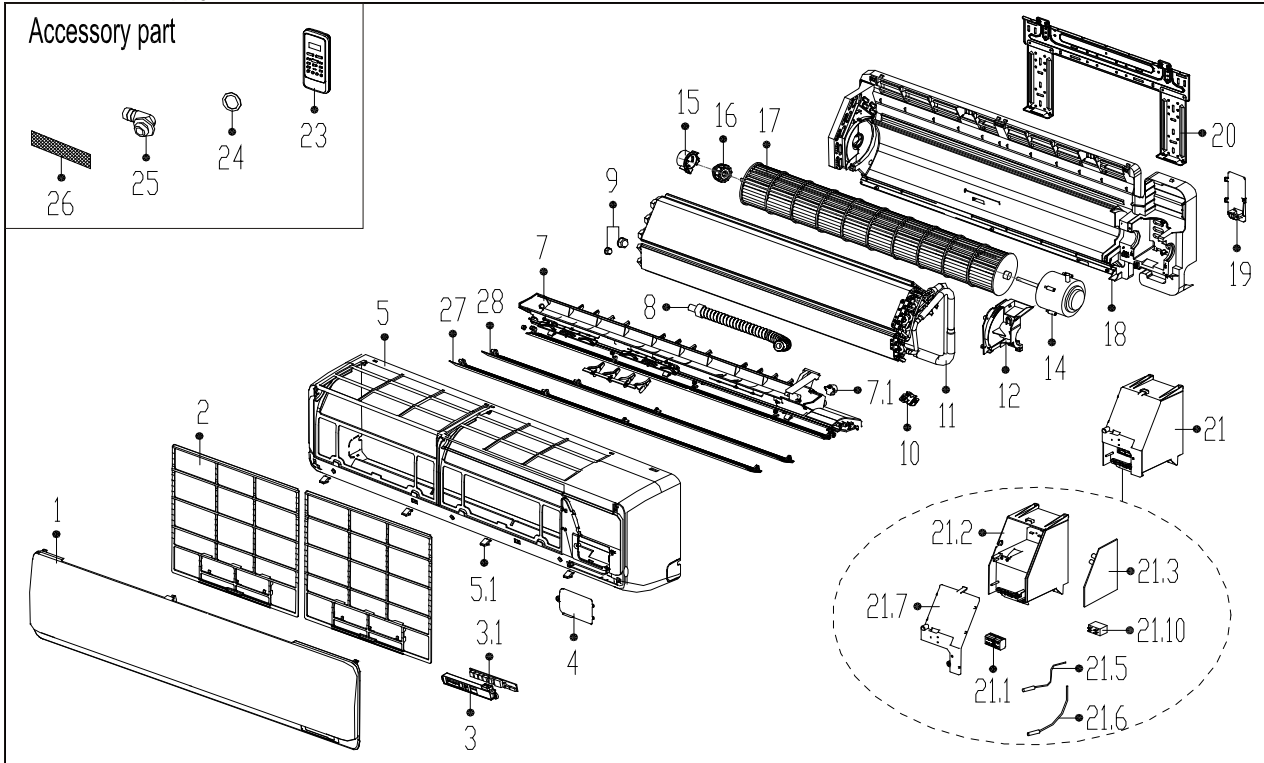
No.	Part Name	Quantity	BOM code	Bin Code	Remark
1	Panel assembly	1	2011328A2570	62.10	
2	Air filter	2	201132890670	5.10	
3	Display box assembly	1	203332390972	22.50	
3.1	Display board assembly	1	201332391249	20.60	
4	Cover of electrical equipment	1	201133091048	5.90	
5	Panel frame assembly	1	201132890673	77.60	
5.1	Screw cap	3	201119900950	0.20	
6	Horizontal louver	1	201132890671	13.80	
7	Air outlet assembly	1	201132890677	57.60	
7.1	Louver motor	1	202400200120	16.40	
8	Drain hose	1	201101020038	3.70	
9	Pipe nut	1	201600330001	0.20	
9	Pipe nut	1	201600330003	0.40	
10	Fix clamp of temperature sensor	1	201102000305	0.20	
11	Evaporator assembly	1	201532890153	453.70	
12	Fan motor cover	1	201133090980	3.60	
13	Fixing board of fan motor	1	201133090167	0.80	
14	Brushless DC Motor	1	202400300064	361.40	
15	Bearing holder	1	201119900952	0.50	
16	Bearing base	1	202719900606	1.30	
17	Cross flow fan	1	201100200056	53.10	
18	Chassis assembly	1	201132890703	97.00	
19	Pipe clamp board	1	201232800103	0.90	
20	Installation plate	1	201232590038	14.70	
21	Electronic control box assembly	1	203332890569	178.50	
21.1	Wire joint	1	202301450119	5.40	
21.2	Electronic control box	1	201133090976	19.50	
21.3	Indoor main control board assembly	1	201332890610	140.10	
21.5	Ambient temperature sensor assembly	1	202432390005	3.00	
21.6	Pipe temperature sensor assembly	1	202301300584	4.30	
22	Cover of electronic control box	1	201133090981	3.00	
23	Remote Controller	1	2033550A8810	65.20	
24	Seal ring	1	202720090001	0.20	
25	Drain joint	1	201101020011	0.30	
26	Air freshening filter	1	201131410703	0.90	

Model Number YN018GMFI22RPD
ProdCode : 220037804380
Power Supply : 230V~ 60Hz 1Phase



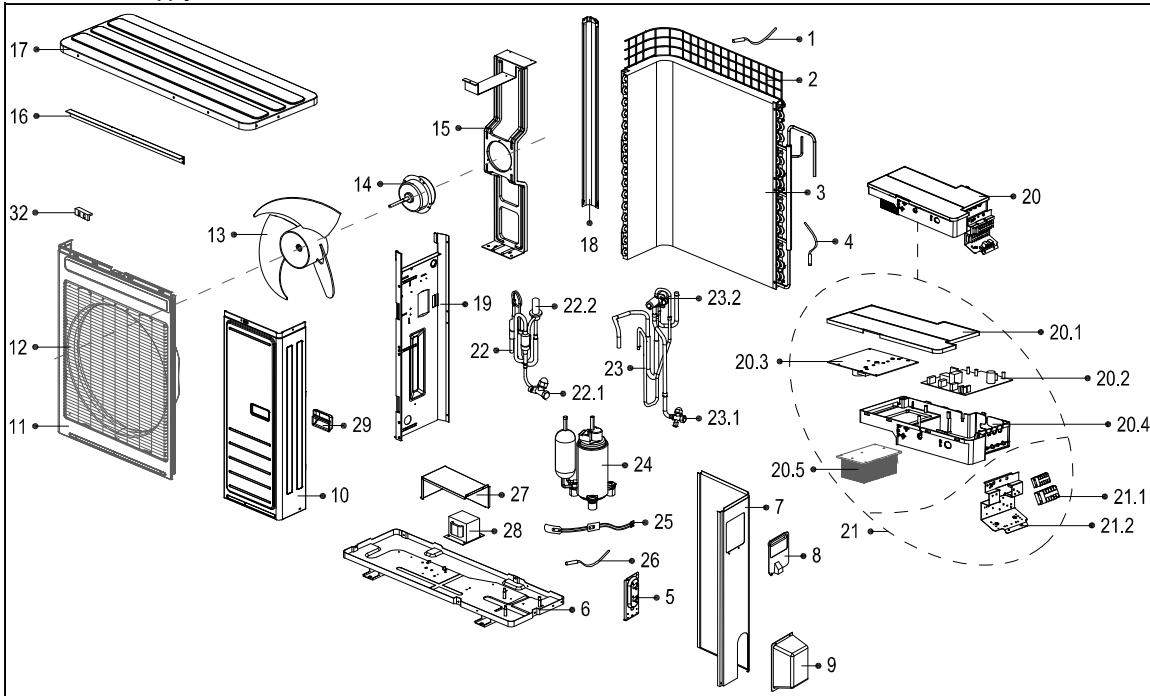
No.	Part Name	Quantity	BOM code	Bin Code	Remark
1	Ambient temperature sensor assembly	1	202301310075	3.60	
2	Rear net	1	201248100375	18.80	
3	Condenser assembly	1	201537891070	829.20	
4	Pipe temperature sensor assembly	1	202440500004	4.70	
5	Valve plate	1	201237300316	5.70	
6	Chassis assembly	1	201257090054	96.10	
7	Rear right clapboard assembly	1	201237890100	46.20	
8	Big handle	1	201237390104	5.70	
9	Water collector	1	201137390017	4.80	
10	Front right clapboard assembly	1	201248100389	44.30	
11	Front panel	1	201248100356	56.60	
12	Air outlet grille	1	201237890112	29.60	
13	Axial flow fan	1	201100300553	55.10	
14	Brushless DC Motor	1	202400300535	417.10	
15	Supporter assembly of fan motor	1	201257090067	54.60	
17	Top cover assembly	1	201248100363	45.40	
18	Left supporter	1	201248100364	24.00	
19	Partition board assembly	1	201237790031	42.90	
20	Electronic control box assembly	1	203337890346	688.20	
20.1	Cover of electronic control box	1	201237300162	6.30	
20.2	Outdoor main control board assembly	1	201337890039	624.40	
20.3	Support of electronic control box	1	201137300162	5.00	
20.4	Radiator	1	202301900112	52.90	
20.5	Electronic installing box	1	201237300318	6.70	
21	Terminal board assembly	1	203337990161	48.50	
21.1	Wire joint	1	202301400256	22.90	
21.2	Terminal board	1	201237890064	4.50	
22	Liquid valve assembly	1	201637891654	0.00	
22.1	Liquid valve	1	201600700078	16.90	
22.2	Electronic expansion valve assembly	1	201601300554	127.80	
23	4-ways valve assembly	1	201637891596	219.20	
23.1	Gas valve	1	201600720194	33.10	
23.2	4-ways valve	1	201600690011	100.10	
24	Compressor	1	201400603269	962.20	
25	Crankcase electric heater	1	202403100501	24.40	
26	Discharge temperature sensor assembly	1	202301310068	7.10	
27	Cover of inductance	1	201248090001	11.50	
28	Reactor	1	202301000820	61.10	
28	Reactor	1	202301000819	57.20	
30	Clamp of front net	8	201135110801	0.20	
31	Capacitor of compressor	1	202401000078	27.10	
32	Capacitor clip	1	201200100002	0.30	

Model Number WQ024GMFI22HLD
ProdCode : 220033005030
Power Supply : 230V~ 60Hz 1Phase



No.	Part Name	Quantity	BOM code	Bin Code	Remark
1	Panel assembly	1	2011330A6014	82.90	
2	Air filter	2	201133090992	6.60	
3	Display box assembly	1	203332390972	22.50	
3.1	Display board assembly	1	201332391249	20.60	
4	Cover of electrical equipment	1	201119901024	3.30	
5	Panel frame assembly	1	201133090996	124.70	
5.1	Screw cap	4	201119900950	0.20	
7	Air outlet assembly	1	201133091008	83.90	
7.1	Louver motor	1	202400200070	26.60	
8	Drain hose	1	201101020038	3.70	
9	Pipe nut	1	201600330004	0.50	
9	Pipe nut	1	201600330002	0.40	
10	Fix clamp of temperature sensor	1	201102000305	0.20	
11	Evaporator assembly	1	201533090143	688.30	
12	Fan motor cover	1	201133090991	8.30	
14	Asynchronous motor	1	202400401301	230.00	
15	Bearing holder	1	201119900952	0.50	
16	Bearing base	1	202719900606	1.30	
17	Cross flow fan	1	201100200057	65.70	
18	Chassis assembly	1	201133090995	124.60	
19	Pipe clamp board	1	201133090989	1.60	
20	Installation plate	1	201232990002	21.80	
21	Electronic control box assembly	1	203333090523	215.70	
21.1	Wire joint	1	202301450119	5.40	
21.2	Electronic control box	1	201133190200	28.40	
21.3	Indoor main control board assembly	1	201333090769	97.40	
21.5	Ambient temperature sensor assembly	1	202301300210	3.70	
21.6	Pipe temperature sensor assembly	1	202301300426	3.80	
21.7	Cover of electronic control box	1	201133190184	6.60	
21.8	Power module assembly	1	201333090408	44.40	
21.10	Fan motor capacitor	1	202401100354	5.40	
23	Remote Controller	1	2033550A8810	65.20	
24	Seal ring	1	202720090001	0.20	
25	Drain joint	1	201101020011	0.30	
26	Air freshening filter	1	201131410703	0.90	
27	Horizontal louver (above)	1	201133090993	13.00	
28	Horizontal louver (below)	1	201133090999	10.30	

Model Number YN024GMFI22RPD
ProdCode : 220038003780
Power Supply : 230V~ 60Hz 1Phase



No.	Part Name	Quantity	BOM code	Bin Code	Remark
1	Ambient temperature sensor assembly	1	202301310075	3.80	
2	Rear net	1	2011482G0001	7.60	
3	Condenser assembly	1	201538090077	1120.00	
4	Pipe temperature sensor assembly	1	202301300111	5.70	
5	Valve plate	1	201248300316	7.60	
6	Chassis assembly	1	201257190085	118.50	
7	Rear right clapboard assembly	1	201238090067	59.20	
8	Big handle	1	201237390104	7.60	
9	Water collector	1	201138090002	5.70	
10	Front right clapboard assembly	1	201248200082	70.70	
11	Front panel	1	201248200103	99.40	
12	Air outlet grille	1	201238090068	28.70	
13	Axial flow fan	1	201100300042	42.00	
14	Asynchronous motor	1	202400300047	470.20	
15	Supporter assembly of fan motor	1	201257190071	66.90	
16	Rear supporter	1	201248200095	7.60	
17	Top cover assembly	1	201248300309	55.40	
18	Left supporter	1	201248400036	11.50	
19	Partition board assembly	1	201257190115	45.70	
20	Electronic control box assembly	1	203338090316	0.00	
20.1	Cover of electronic control box	1	201157190011	15.10	
20.2	Main control board assembly	1	201338090071	0.00	
20.3	Inverter control board assembly	1	201357190085	686.50	
20.4	Installation board for E-parts	1	201157190010	34.00	
20.5	Radiator	1	202301901173	66.20	
21	Terminal board assembly	1	203338090315	0.00	
21.1	Wire joint	1	202301450155	7.60	
21.2	Terminal board	1	201257190116	3.80	
22	Liquid valve assembly	1	201638091091	0.00	
22.1	Liquid valve	1	201600740706	24.80	
22.2	Electronic expansion valve	1	201601300032	202.60	
23	4-way valve assembly	1	201638091121	234.20	
23.1	Gas valve	1	201600720398	47.80	
23.2	4-Ways valve	1	201600600119	117.30	
24	Compressor	1	201400601740	1781.30	
25	Crankcase electric heater	1	202495030150	22.90	
26	Discharge temperature sensor assembly	1	202448200000	11.00	
27	Cover of inductance	1	201248390003	9.60	
28	Reactance	1	202301000943	109.70	
29	Small Handle	2	201148700009	1.90	
32	Clamp for front net	8	201135110801	1.90	
32	Capacitor clip	1	201200100002	0.00	