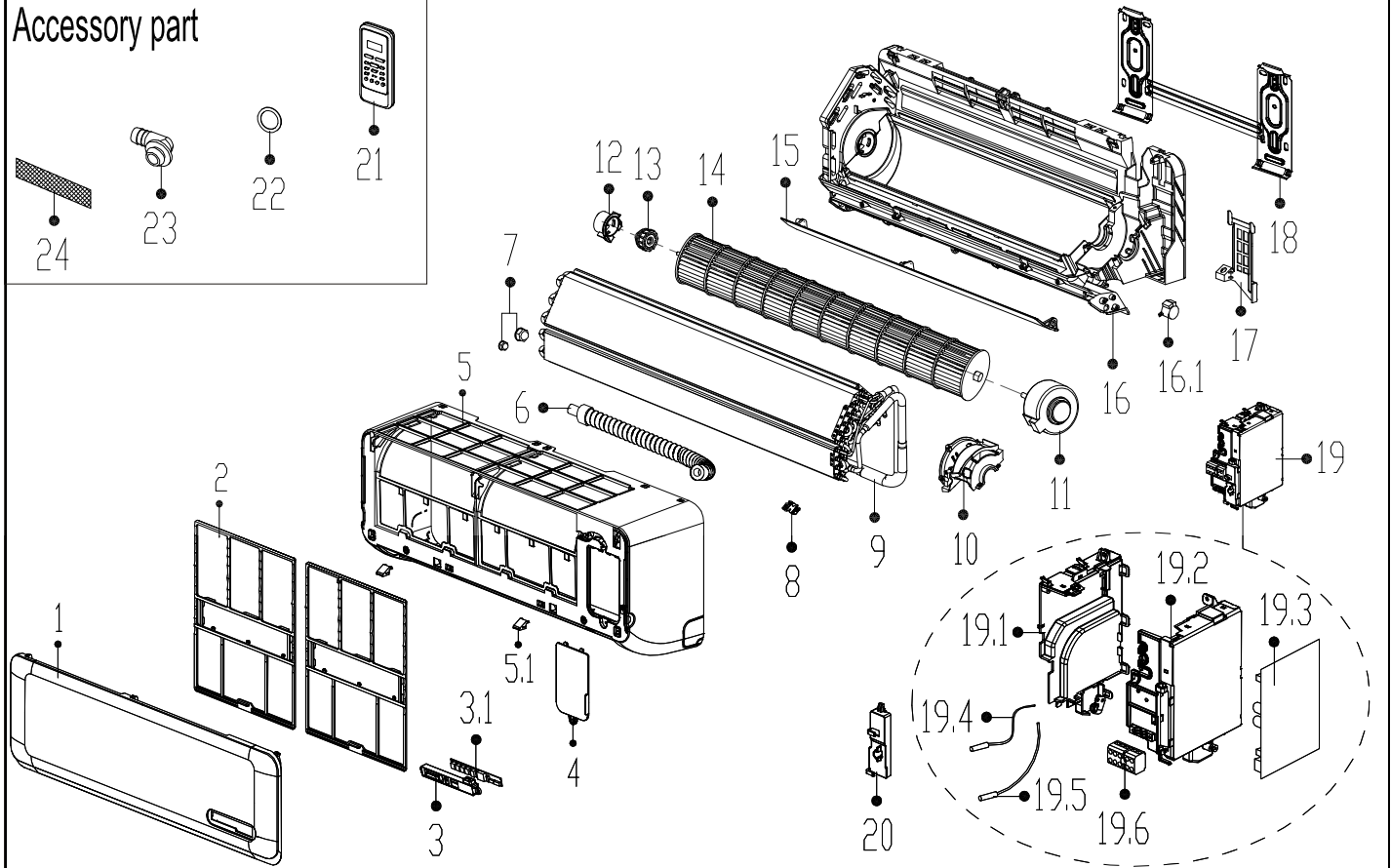


**Model Number:** WE009AMFI15HLD  
**Product Code :** 220032308650  
**Power Supply :** 115V~ 60Hz 1Phase

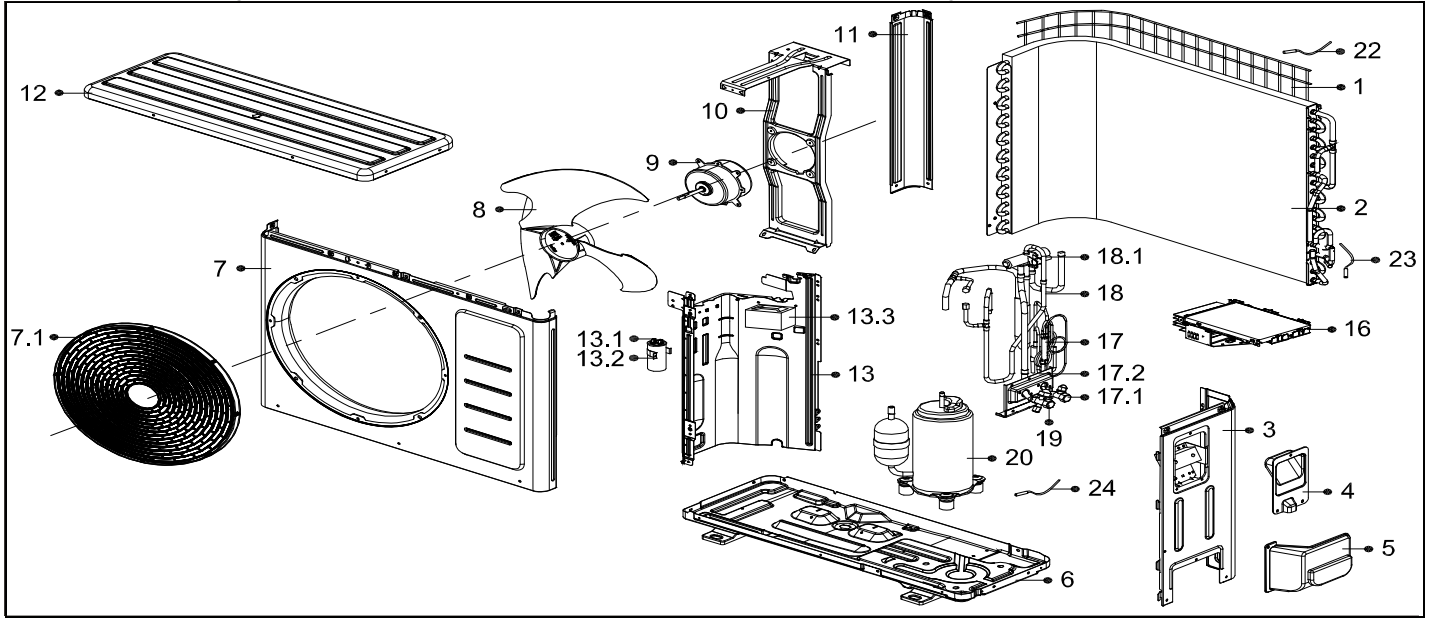
**Capacity:** 9,000 BTU



No.	Part Name	Quantity	BOM Code	Bin Code	Remark
1	Panel assembly	1	201132391050	24	
2	Air filter	2	201132391045	2	
3	Display box assembly	1	203332590982	18	
3.1	Display board assembly	1	201332391207	13	
4	Cover of indoor electronic control box	1	201119901024	3	
5	Panel frame assembly	1	201132391047	44	
5.1	Screw cap	2	201119900950	0	
6	Drain hose	1	201101020038	4	
7	Pipe Nut	1	201600330001	0	
7	Pipe Nut	1	201600330002	0	
8	Fix clamp of temperature sensor	1	201102000305	0	
9	Evaporator assembly	1	201532390187	205	
10	Fan motor cover	1	201132490127	4	
11	Asynchronous motor	1	202400300417	105	
12	Bearing holder	1	201119900952	1	
13	Bearing base	1	202719900606	1	
14	Cross flow fan	1	201100200050	29	
15	Horizontal louver	1	201132391046	6	
16	Chassis assembly	1	201132392598	73	
16.1	Louver motor	1	202400200031	10	
17	Pipe clamp board	1	201119900949	1	
18	Installation plate	1	201232390033	8	
19	Electronic control box assembly	1	203332391078	160	
19.1	Electronic control box I	1	201132490125	6	
19.2	Electronic control box II	1	201132490139	9	
19.3	Main control board assembly	1	201332391529	125	
19.4	Ambient temperature sensor assembly	1	202433190000	3	
19.5	Pipe temperature sensor assembly	1	202301300584	4	
19.6	Wire joint	1	202301400488	7	
20	Cover of electronic control box	1	201132490126	1	
21	Remote Controller	1	203355091469	22	
22	Seal	1	202720090001	0	
23	Drain joint	1	201101020011	0	
24	Air freshening filter	1	201131410703	1	

**Model Number:** YN009AMFI16RPD  
**Product Code:** 220037306100  
**Power Supply:** 115V~ 60Hz 1Phase

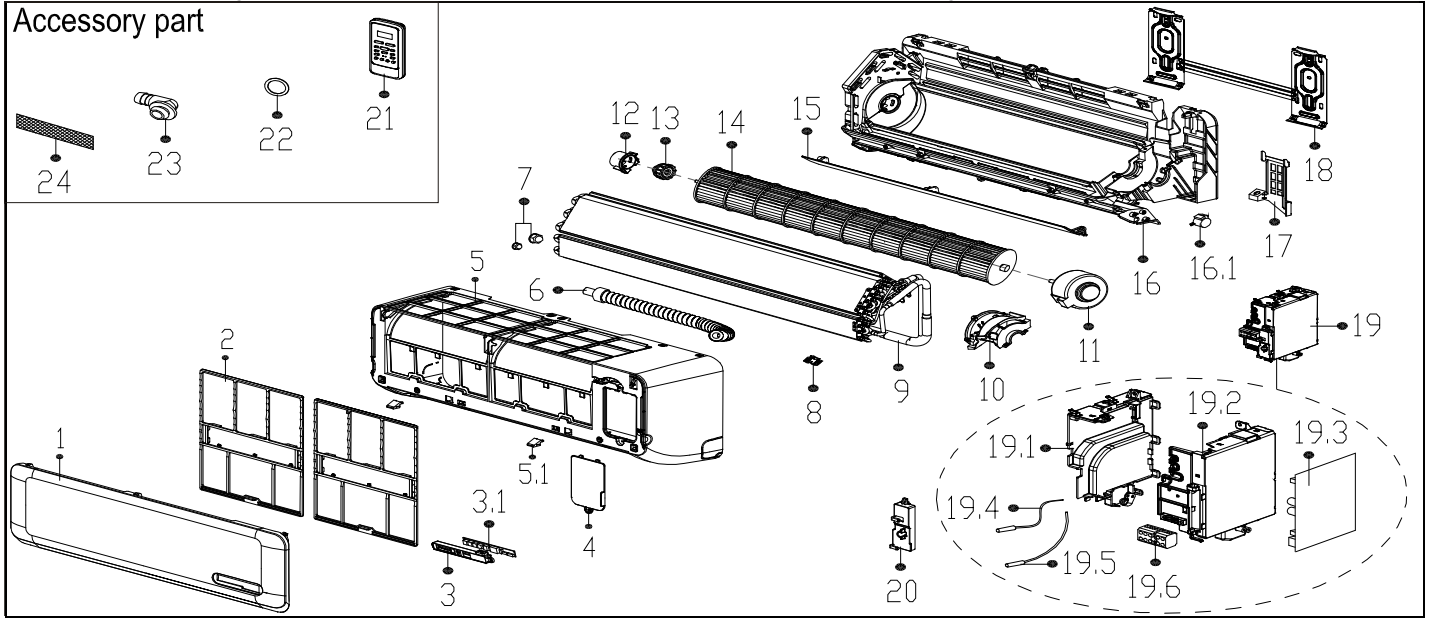
**Capacity:** 9,000 BTU



No.	Part Name	Quantity	BOM Code	Bin Code	Remark
1	Rear net	1	201137300179	4	
2	Condenser assembly	1	201537390176	394	
3	Right clapboard assembly	1	201237500257	65	
4	Big handle	1	201237390104	5	
5	Water collector	1	201137390017	6	
6	Chassis assembly	1	201237500230	46	
7	Front panel	1	201237500196	60	
7.1	Air outlet grille	1	201137500010	12	
8	Axial flow fan	1	201100300034	20	
9	Asynchronous motor	1	202400400990	124	
10	Supporter assembly of fan motor	1	201237500176	12	
11	Left supporter	1	201237500180	8	
12	Top cover assembly	1	201237500177	31	
13	Partition board assembly	1	201237500258	106	
13.1	Capacitor of compressor	1	202401090021	27	
13.2	Capacitor clip	1	201200100026	0	
13.3	Reactance	1	202301000860	56	
16	Electronic control box assembly	1	203337390229	493	
17	Liquid valve assembly	1	201637391529	45	
17.1	Liquid valve	1	201600700078	18	
17.2	Valve plate	1	2012373N0005	3	
18	4-way valve assembly	1	201637391531	164	
18.1	4-Ways valve	1	201600690008	90	
19	Gas valve	1	201600720094	29	
20	Compressor	1	201400601230	820	
22	Ambient temperature sensor assembly	1	202301300115	4	
23	Pipe temperature sensor assembly	1	202301300445	4	
24	Discharge temperature sensor assembly	1	202301310068	7	

**Model Number:** WE009GMF15HLD  
**Product Code:** 220032308400  
**Power Supply:** 208-230V~ 60Hz 1Phase

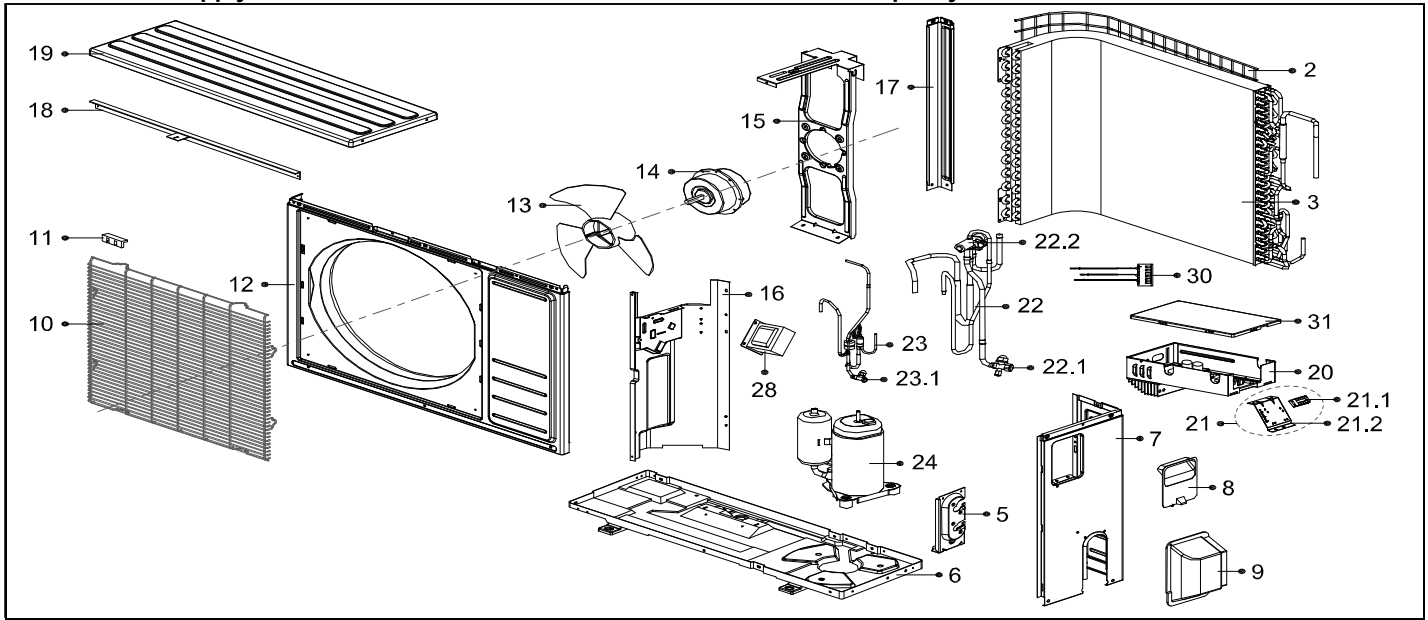
**Capacity:** 9,000 BTU



No.	Part Name	Quantity	BOM Code	Bin Code	Remark
1	Panel assembly	1	201132391050	24	
2	Air filter	2	201132391045	2	
3	Display box assembly	1	203332590982	18	
3.1	Display board assembly	1	201332391207	13	
4	Cover of indoor electronic control box	1	201119901024	3	
5	Panel frame assembly	1	201132391047	44	
5.1	Screw cap	2	201119900950	0	
6	Drain hose	1	201101020038	4	
7	Pipe Nut	1	201600330001	0	
7	Pipe Nut	1	201600330002	0	
8	Fix clamp of temperature sensor	1	201102000305	0	
9	Evaporator assembly	1	201532390187	205	
10	Fan motor cover	1	201132490127	4	
11	Asynchronous motor	1	202400300136	118	
12	Bearing holder	1	201119900952	1	
13	Bearing base	1	202719900606	1	
14	Cross flow fan	1	201100200050	29	
15	Horizontal louver	1	201132391046	6	
16	Chassis assembly	1	201132392598	73	
16.1	Louver motor	1	202400200031	10	
17	Pipe clamp board	1	201119900949	1	
18	Installation plate	1	201232390033	8	
19	Electronic control box assembly	1	203332391055	171	
19.1	Electronic control box I	1	201132490125	6	
19.2	Electronic control box II	1	201132490139	9	
19.3	Main control board assembly	1	201332391405	136	
19.4	Ambient temperature sensor assembly	1	202433190000	3	
19.5	Pipe temperature sensor assembly	1	202301300584	4	
19.6	Wire joint	1	202301400488	7	
20	Cover of electronic control box	1	201132490126	1	
21	Remote Controller	1	203355091469	22	
22	Seal	1	202720090001	0	
23	Drain joint	1	201101020011	0	
24	Air freshening filter	1	201131410703	1	

**Model Number:** YN009GMFI15RPD  
**Product Code:** 220037305940  
**Power Supply:** 208-230V~ 60Hz 1Phase

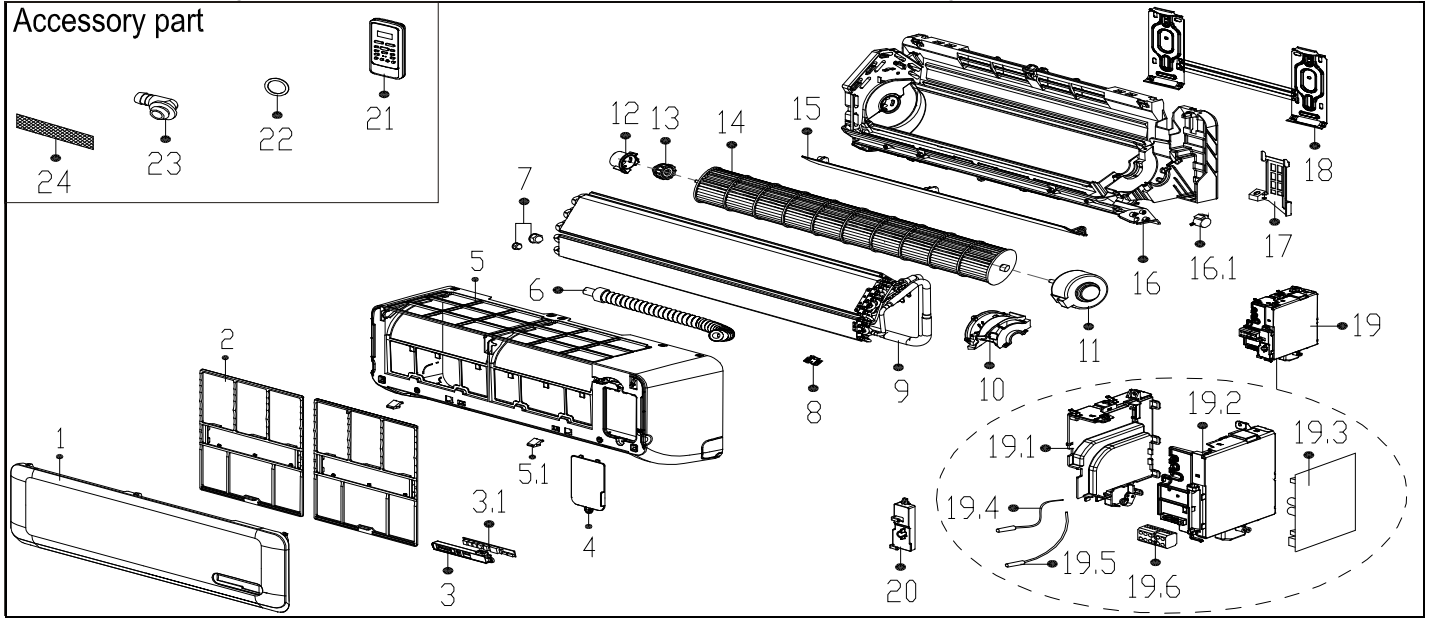
**Capacity:** 9,000 BTU



No.	Part Name	Quantity	BOM Code	Bin Code	Remark
2	Rear net	1	2011372G0003	5	
3	Condenser assembly	1	201537390061	254	
5	Valve plate	1	201237200282	3	
6	Chassis assembly	1	201237390092	47	
7	Rear right clapboard assembly	1	201237390116	23	
8	Big handle	1	201237390104	5	
9	Water collector	1	201137390016	5	
10	Air outlet grille	1	201237390105	23	
11	Clamp of front net	6	201135110801	0	
12	Front panel	1	201237090027	32	
13	Axial flow fan	1	201100300055	23	
14	Asynchronous motor	1	202400401344	127	
15	Supporter assembly of fan motor	1	201237200035	12	
16	Partition board assembly	1	201237390117	19	
17	Left supporter	1	201237200271	5	
18	Supporter of fan motor holder	1	201237200037	2	
19	Top cover assembly	1	201237200275	16	
20	Electronic control box assembly	1	203337390222	388	
21	Terminal board assembly	1	203337390224	14	
21.1	Wire joint	1	202301400377	9	
21.2	Terminal board	1	201237390073	1	
22	4-Ways valve assembly	1	201637391277	157	
22.1	Gas valve	1	201600720095	28	
22.2	4-Ways valve	1	201600690010	87	
23	Liquid valve assembly	1	201637391479	32	
23.1	Liquid valve	1	201600740523	18	
24	Compressor	1	201400601230	820	
28	Reactor	1	202301000847	69	
30	Compound temperature sensor	1	202301300602	18	
31	Cover of electronic control box	1	201137490029	8	

**Model Number:** WE012AMFI15HLD  
**Product Code:** 220032506970  
**Power Supply:** 115V~ 60Hz 1Phase

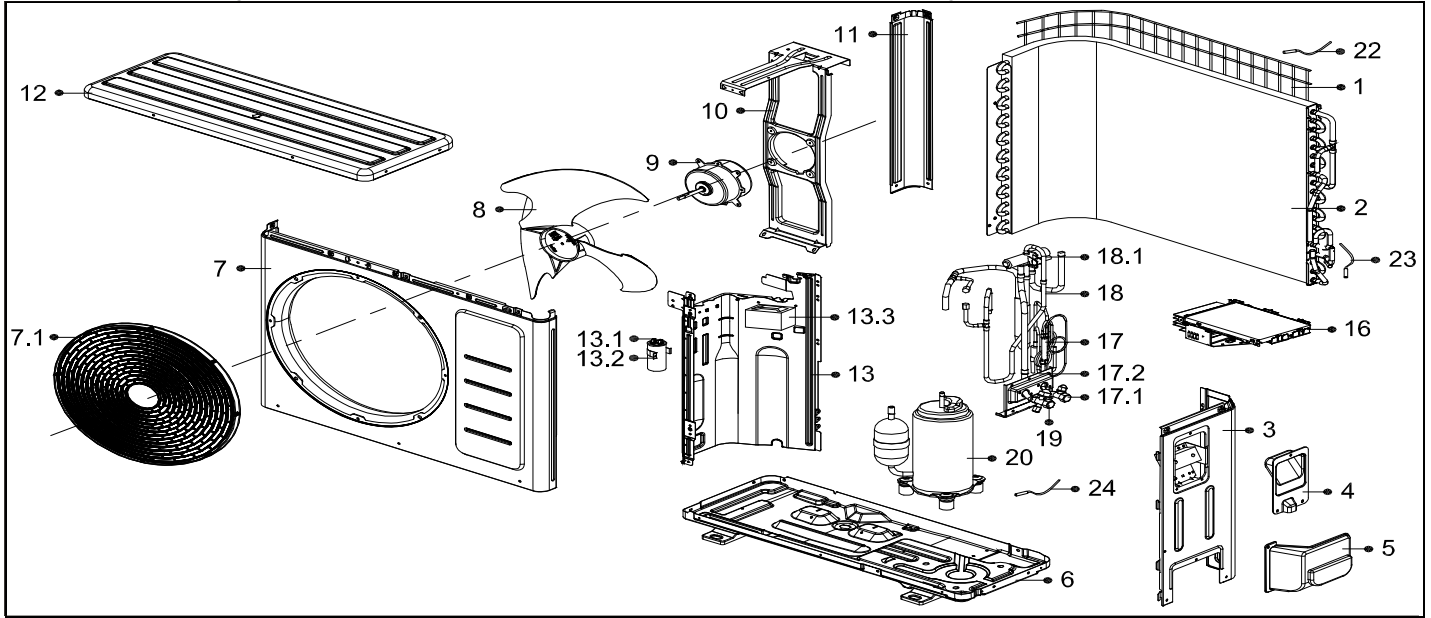
**Capacity:** 12,000 BTU



No.	Part Name	Quantity	BOM Code	Bin Code	Remark
1	Panel assembly	1	201132490135	24	
2	Air filter	2	201132490130	3	
3	Display box assembly	1	203332590982	18	
3.1	Display board assembly	1	201332391207	13	
4	Cover of indoor electronic control box	1	201119900948	1	
5	Panel frame assembly	1	201132490134	49	
5.1	Screw cap	2	201119900950	0	
6	Drain hose	1	201101020038	4	
7	Pipe Nut	1	201600330001	0	
7	Pipe Nut	1	201600330003	0	
8	Fix clamp of temperature sensor	1	201102000305	0	
9	Evaporator assembly	1	201532490047	252	
10	Fan motor cover	1	201132490127	4	
11	Asynchronous motor	1	202400300417	105	
12	Bearing holder	1	201119900952	1	
13	Bearing base	1	202719900606	1	
14	Cross flow fan	1	201100200051	32	
15	Horizontal louver	1	201132490131	8	
16	Chassis assembly	1	201132490142	81	
16.1	Louver motor	1	202400200031	10	
17	Pipe clamp board	1	201119900949	1	
18	Installation plate	1	201232490004	9	
19	Electronic control box assembly	1	203332591108	160	
19.1	Electronic control box I	1	201132490125	6	
19.2	Electronic control box II	1	201132490139	9	
19.3	Main control board assembly	1	201332591030	125	
19.4	Ambient temperature sensor assembly	1	202433190000	3	
19.5	Pipe temperature sensor assembly	1	202301300584	4	
19.6	Wire joint	1	202301400488	7	
20	Cover of electronic control box	1	201132490126	1	
21	Remote Controller	1	203355091469	22	
22	Seal	1	202720090001	0	
23	Drain joint	1	201101020011	0	
24	Air freshening filter	1	201131410703	1	

**Model Number:** YN012AMFI15RPD  
**Product Code:** 220037505570  
**Power Supply:** 115V~ 60Hz 1Phase

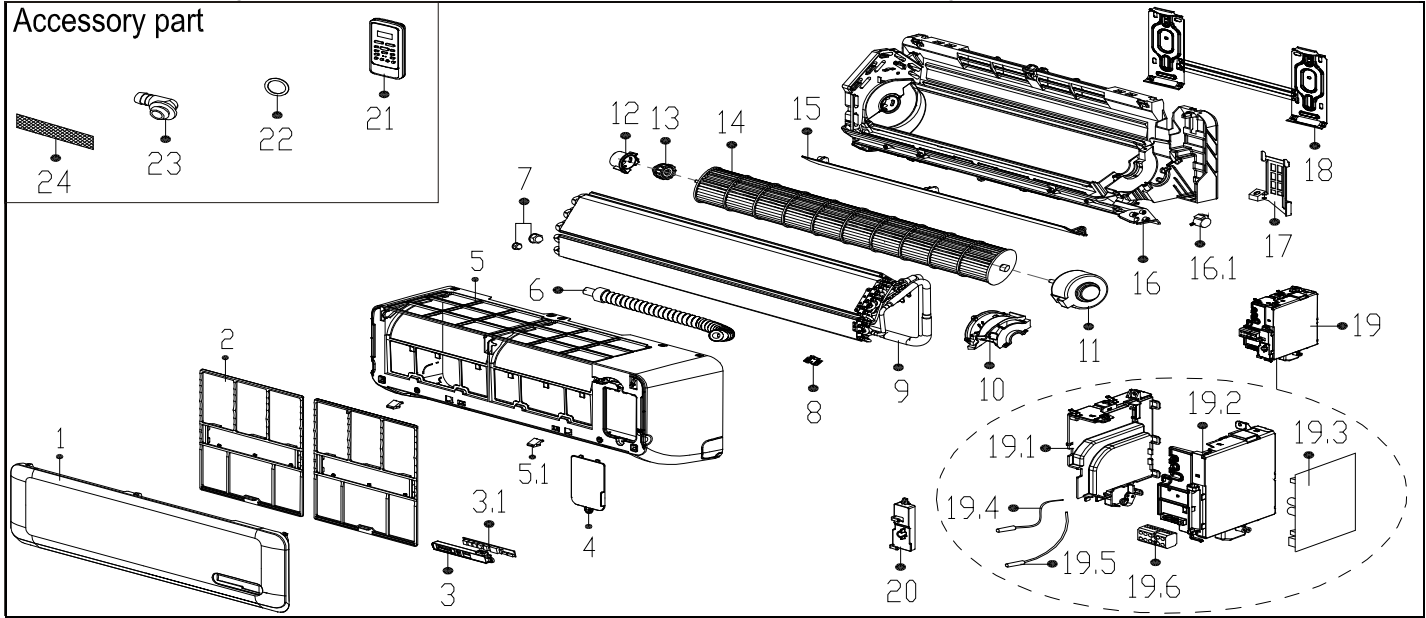
**Capacity:** 12,000 BTU



No.	Part Name	Quantity	BOM Code	Bin Code	Remark
1	Rear net	1	201137300179	4	
2	Condenser assembly	1	201537591112	479	
3	Right clapboard assembly	1	201237500257	65	
4	Big handle	1	201237390104	5	
5	Water collector	1	201137390017	6	
6	Chassis assembly	1	201237500230	46	
7	Front panel	1	201237500196	60	
7.1	Air outlet grille	1	201137500010	12	
8	Axial flow fan	1	201100300034	20	
9	Asynchronous motor	1	202400400990	124	
10	Supporter assembly of fan motor	1	201237500176	12	
11	Left supporter	1	201237500180	8	
12	Top cover assembly	1	201237500177	31	
13	Partition board assembly	1	201237500258	106	
13.1	Capacitor of compressor	1	202401090021	27	
13.2	Capacitor clip	1	201200100026	0	
13.3	Reactance	1	202301000860	56	
16	Electronic control box assembly	1	203337390229	493	
17	Liquid valve assembly	1	201637591330	31	
17.1	Liquid valve	1	201600700076	18	
17.2	Valve plate	1	2012373N0005	3	
18	4-way valve assembly	1	201637591332	163	
18.1	4-Ways valve	1	201600690008	90	
19	Gas valve	1	201600720194	35	
20	Compressor	1	201400601230	820	
22	Ambient temperature sensor assembly	1	202301300115	4	
23	Pipe temperature sensor assembly	1	202301300445	4	
24	Discharge temperature sensor assembly	1	202301310068	7	

**Model Number:** WE012GMF15HLD  
**Product Code:** 220032506770  
**Power Supply:** 208-230V~ 60Hz 1Phase

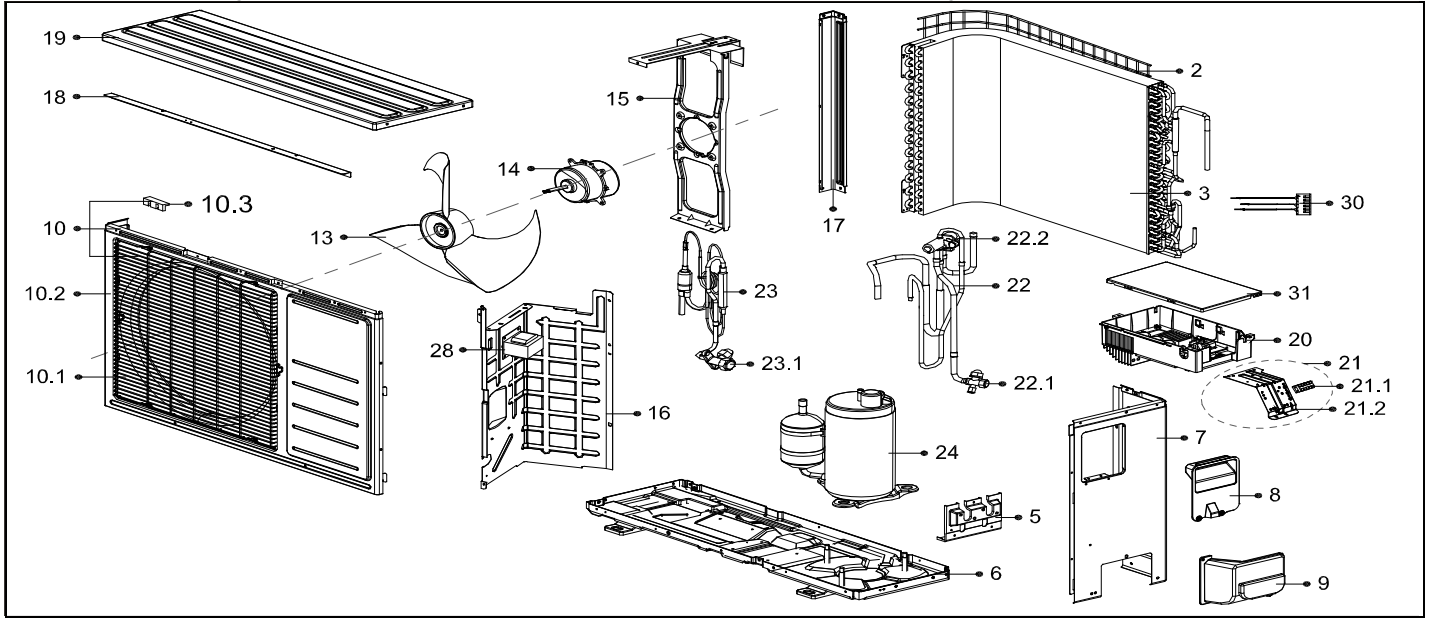
**Capacity:** 12,000 BTU



No.	Part Name	Quantity	BOM Code	Bin Code	Remark
1	Panel assembly	1	201132490135	24	
2	Air filter	2	201132490130	3	
3	Display box assembly	1	203332590982	18	
3.1	Display board assembly	1	201332391207	13	
4	Cover of indoor electronic control box	1	201119900948	1	
5	Panel frame assembly	1	201132490134	49	
5.1	Screw cap	2	201119900950	0	
6	Drain hose	1	201101020038	4	
7	Pipe Nut	1	201600330001	0	
7	Pipe Nut	1	201600330002	0	
8	Fix clamp of temperature sensor	1	201102000305	0	
9	Evaporator assembly	1	201532490051	250	
10	Fan motor cover	1	201132490127	4	
11	Asynchronous motor	1	202400300137	127	
12	Bearing holder	1	201119900952	1	
13	Bearing base	1	202719900606	1	
14	Cross flow fan	1	201100200051	32	
15	Horizontal louver	1	201132490131	8	
16	Chassis assembly	1	201132490142	81	
16.1	Louver motor	1	202400200031	10	
17	Pipe clamp board	1	201119900949	1	
18	Installation plate	1	201232490004	9	
19	Electronic control box assembly	1	203332591084	170	
19.1	Electronic control box I	1	201132490125	6	
19.2	Electronic control box II	1	201132490139	9	
19.3	Main control board assembly	1	201332590944	134	
19.4	Ambient temperature sensor assembly	1	202433190000	3	
19.5	Pipe temperature sensor assembly	1	202301300584	4	
19.6	Wire joint	1	202301400488	7	
20	Cover of electronic control box	1	201132490126	1	
21	Remote Controller	1	203355091469	22	
22	Seal	1	202720090001	0	
23	Drain joint	1	201101020011	0	
24	Air freshening filter	1	201131410703	1	

**Model Number:** YN012GMFI15RPD  
**Product Code:** 220037505410  
**Power Supply:** 208-230V~ 60Hz 1Phase

**Capacity:** 12,000 BTU

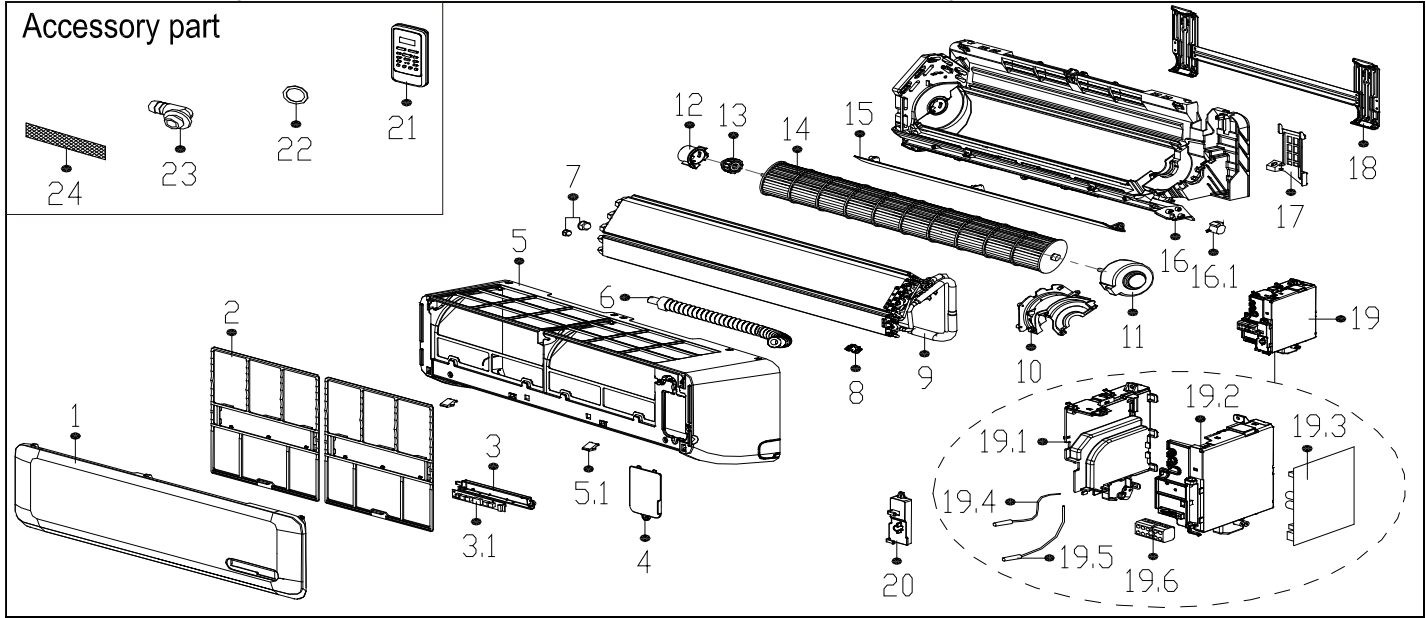


No.	Part Name	Quantity	BOM Code	Bin Code	Remark
2	Rear net	1	2011376G0001	5	
3	Condenser assembly	1	201537591096	419	
5	Valve plate	1	201237300316	6	
6	Chassis assembly	1	201237490041	62	
7	Rear right clapboard assembly	1	201237390090	17	
8	Big handle	1	201237390104	5	
9	Water collector	1	201137390017	6	
10	Front panel assembly	1	201237400427	60	
10.1	Air outlet grille	1	201237390105	23	
10.2	Front panel	1	201237400411	38	
10.3	Clamp of front net	6	201135110801	0	
13	Axial flow fan	1	201100320625	21	
14	Asynchronous motor	1	202400401345	136	
15	Supporter assembly of fan motor	1	201237400051	13	
16	Partition board assembly	1	201237490025	21	
17	Left supporter	1	201237400397	5	
18	Supporter of fan motor holder	1	201237400055	3	
19	Top cover assembly	1	201237400412	24	
20	Electronic control box assembly	1	203337390222	388	
21	Terminal board assembly	1	203337490048	29	
21.1	Wire joint	1	202301400256	23	
21.2	Terminal board	1	201237490039	3	
22	4-Ways valve assembly	1	201637591097	179	
22.1	Gas valve	1	201600720094	29	
22.2	4-Ways valve	1	201600690010	87	
23	Liquid valve assembly	1	201637591295	45	
23.1	Liquid valve	1	201600700078	18	
24	Compressor	1	201400601230	820	
28	Reactor	1	202301000847	69	
30	Compound temperature sensor	1	202301300602	18	
31	Cover of electronic control box	1	201137490029	8	



**Model Number:** WE018GMF15HLD  
**Product Code:** 220032805570  
**Power Supply:** 208-230V~ 60Hz 1Phase

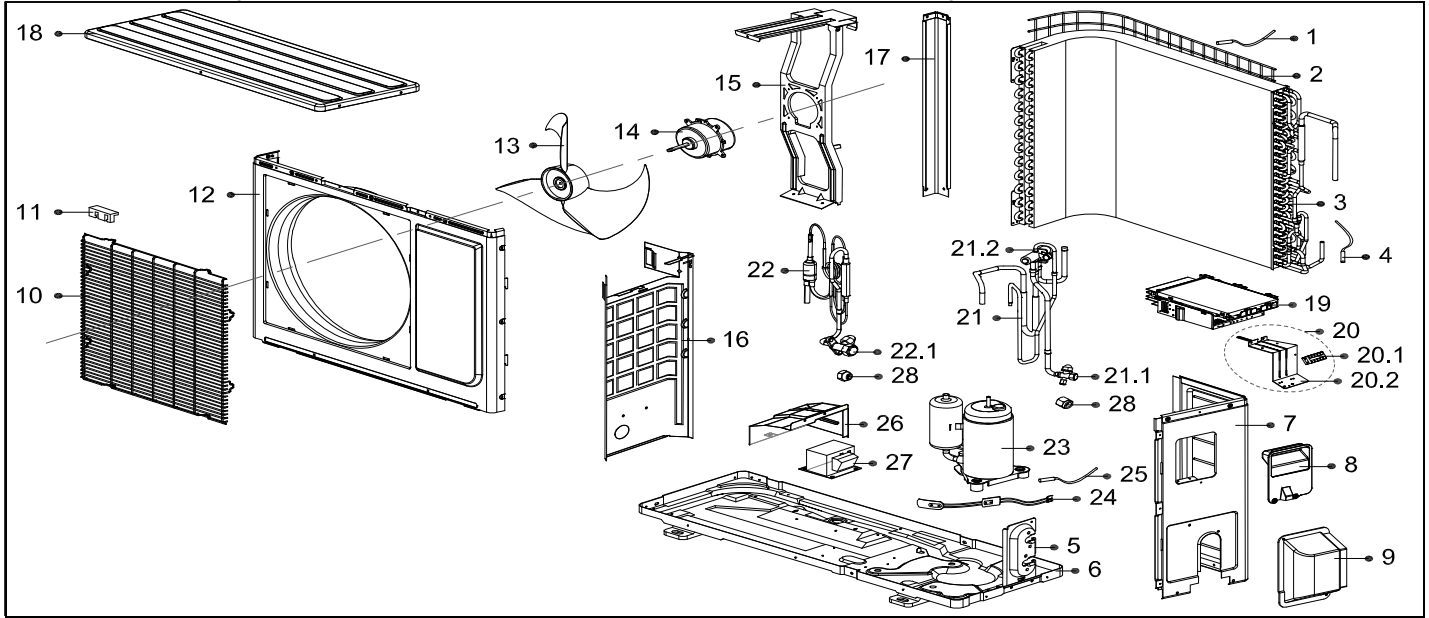
**Capacity:** 18,000 BTU



No.	Part Name	Quantity	BOM Code	Bin Code	Remark
1	Panel assembly	1	201132790646	36	
2	Air filter	2	201132790644	5	
3	Display box assembly	1	203332590982	18	
3.1	Display board assembly	1	201332391207	13	
4	Cover of indoor electronic control box	1	201119900948	1	
5	Panel frame assembly	1	201132790641	62	
5.1	Screw cap	2	201119900950	0	
6	Drain hose	1	201101020038	4	
7	Pipe Nut	1	201600330003	0	
7	Pipe Nut	1	201600330001	0	
8	Fix clamp of temperature sensor	1	201102000305	0	
9	Evaporator assembly	1	201532790079	352	
10	Fan motor cover	1	201132790645	3	
11	Asynchronous motor	1	202400300419	125	
12	Bearing holder	1	201119900952	1	
13	Bearing base	1	202719900606	1	
14	Cross flow fan	1	201100200052	41	
15	Horizontal louver	1	201132790643	12	
16	Chassis assembly	1	201132790679	99	
16.1	Louver motor	1	202400200031	10	
17	Pipe clamp board	1	201119900949	1	
18	Installation plate	1	201232790013	11	
19	Electronic control box assembly	1	203332591086	159	
19.1	Electronic control box I	1	201132490125	6	
19.2	Electronic control box II	1	201132490139	9	
19.3	Main control board assembly	1	201332590946	123	
19.4	Ambient temperature sensor assembly	1	202433190000	3	
19.5	Pipe temperature sensor assembly	1	202301300584	4	
19.6	Wire joint	1	202301400488	7	
20	Cover of electronic control box	1	201132490126	1	
21	Remote Controller	1	203355091469	22	
22	Seal	1	202720090001	0	
23	Drain joint	1	201101020011	0	
24	Air freshening filter	1	201131410703	1	

**Model Number:** YN018GMFI15RPD  
**Product Code:** 220037804260  
**Power Supply:** 208-230V~ 60Hz 1Phase

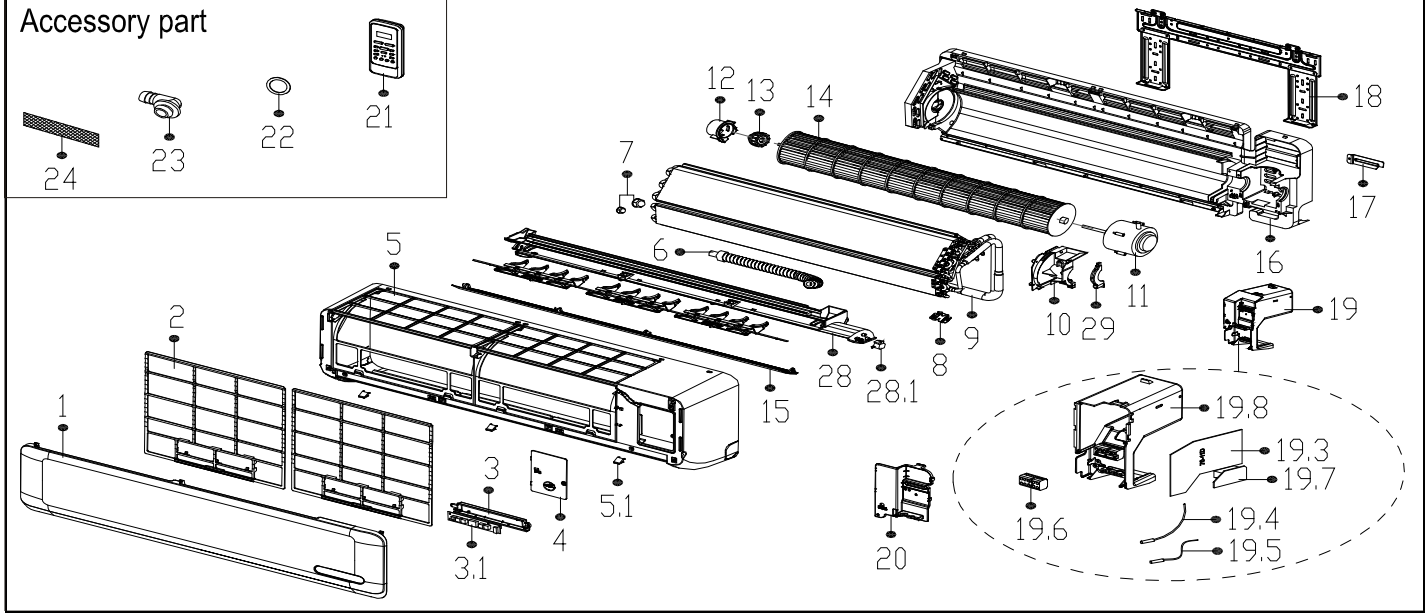
**Capacity:** 18,000 BTU



No.	Part Name	Quantity	BOM Code	Bin Code	Remark
1	Ambient temperature sensor assembly	1	202301310075	4	
2	Rear net	1	2011374G0003	4	
3	Condenser assembly	1	201537690004	410	
4	Pipe temperature sensor assembly	1	202440500004	5	
5	Valve plate	1	201237200282	3	
6	Chassis assembly	1	201237890110	95	
7	Rear right clapboard assembly	1	201237590080	37	
8	Big handle	1	201237390104	5	
9	Water collector	1	201137400000	6	
10	Air outlet grille	1	201237890117	25	
11	Clamp of front net	8	201135110801	0	
12	Front panel	1	201237890111	54	
13	Axial flow fan	1	201100300534	27	
14	Asynchronous motor	1	202400400171	216	
15	Supporter assembly of fan motor	1	201237890080	23	
16	Partition board assembly	1	20123789G003	23	
17	Left supporter	1	201237400400	5	
18	Top cover assembly	1	201237900028	30	
19	Electronic control box assembly	1	203337890327	536	
20	Terminal board assembly	1	203337590049	37	
20.1	Wire joint	1	202301400256	23	
20.2	Terminal board	1	201237590046	5	
21	4-Ways valve assembly	1	201637790555	236	
21.1	Gas valve	1	201600720195	33	
21.2	4-Ways valve	1	201600690011	112	
22	Liquid valve assembly	1	201637891215	53	
22.1	Liquid valve	1	201600740523	18	
23	Compressor	1	201400603269	1047	
24	Crankcase electric heater	1	202403100501	26	
25	Discharge temperature sensor assembly	1	202301310068	7	
26	Cover of inductance	1	20123789G002	6	
27	Reactor	1	202301000903	70	

**Model Number:** WE024GLFI15HLD  
**Product Code:** 220033004910  
**Power Supply:** 208-230V~ 60Hz 1Phase

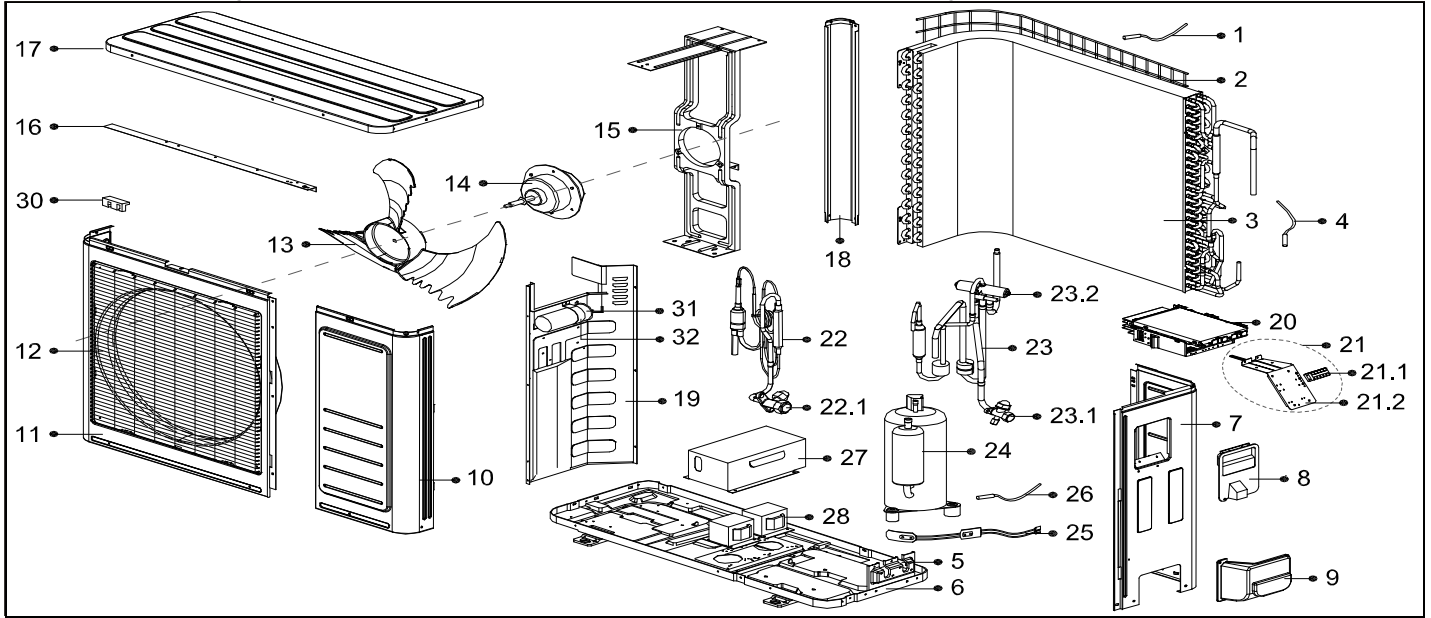
**Capacity:** 22,000 BTU



No.	Part Name	Quantity	BOM Code	Bin Code	Remark
1	Panel assembly	1	201133090983	44	
2	Air filter	2	201133090979	5	
3	Display box assembly	1	203332590982	18	
3.1	Display board assembly	1	201332391207	13	
4	Cover of indoor electronic control box	1	201133091048	6	
5	Panel frame assembly	1	201133090985	80	
5.1	Screw cap	3	201119900950	0	
6	Drain hose	1	201101020038	4	
7	Pipe Nut	1	201600330004	1	
7	Pipe Nut	1	201600330002	0	
8	Fix clamp of temperature sensor	1	201102000305	0	
9	Evaporator assembly	1	201533090118	475	
10	Fan motor cover	1	201133090980	4	
11	Asynchronous motor	1	202400401262	207	
12	Bearing holder	1	201119900952	1	
13	Bearing base	1	202719900606	1	
14	Cross flow fan	1	201100200053	50	
15	Horizontal louver	1	201133090987	15	
16	Chassis assembly	1	201133090986	93	
17	Pipe clamp board	1	201232800103	1	
18	Installation plate	1	201232590038	15	
19	Electronic control box assembly	1	203333090453	145	
19.3	Main control board assembly	1	201333090655	90	
19.4	Ambient temperature sensor assembly	1	202433190000	3	
19.5	Pipe temperature sensor assembly	1	202301300080	3	
19.6	Wire joint	1	202301400488	7	
19.7	Transformer	1	202300900099	19	
19.8	Electronic control box	1	201133090976	19	
20	Cover of electronic control box	1	201133090981	4	
21	Remote Controller	1	203355091469	22	
22	Seal	1	202720090001	0	
23	Drain joint	1	201101020011	0	
24	Air freshening filter	1	201131410703	1	
28	Air outlet assembly	1	201133090978	51	
28.1	Louver motor	1	202400200120	16	
29	Fixing board of fan motor	1	201133090167	1	

**Model Number:** YN024GMFI15RPD  
**Product Code:** 220038003690  
**Power Supply:** 208-230V~ 60Hz 1Phase

**Capacity:** 22,000 BTU



No.	Part Name	Quantity	BOM Code	Bin Code	Remark
1	Ambient temperature sensor assembly	1	202301310075	4	
2	Rear net	1	2011481G0001	7	
3	Condenser assembly	1	201537990071	533	
4	Pipe temperature sensor assembly	1	202440500004	5	
5	Valve plate	1	201237300316	6	
6	Chassis assembly	1	201257090054	102	
7	Rear right clapboard assembly	1	201237890100	45	
8	Big handle	1	201237390104	5	
9	Water collector	1	201137390017	6	
10	Front right clapboard assembly	1	201248100389	38	
11	Front panel	1	201248100390	56	
12	Air outlet grille	1	201237890112	29	
13	Axial flow fan	1	201100320622	35	
14	Asynchronous motor	1	202400401241	226	
15	Supporter assembly of fan motor	1	2012481G0039	43	
16	Rear supporter	1	201248100384	4	
17	Top cover assembly	1	201248100363	55	
18	Left supporter	1	201248100367	12	
19	Partition board assembly	1	201237790031	42	
20	Electronic control box assembly	1	203338090308	632	
21	Terminal board assembly	1	203337990161	48	
21.1	Wire joint	1	202301400256	23	
21.2	Terminal board	1	201237890064	5	
22	Liquid valve assembly	1	201638091046	53	
22.1	Liquid valve	1	201600740704	29	
23	4-way valve assembly	1	201638091048	231	
23.1	Gas valve	1	201600720296	46	
23.2	4-Ways valve	1	201600690011	112	
24	Compressor	1	201400600530	1355	
25	Crankcase electric heater	1	202403100501	26	
26	Discharge temperature sensor assembly	1	202301310068	7	
27	Cover of inductance	1	201248090001	11	
28	Reactor	1	202301050026	150	
28	Reactor	1	202301000819	61	
30	Clamp of front net	8	201135110801	0	
31	Capacitor of compressor	1	202401000078	28	
32	Capacitor clip	1	201200100002	1	