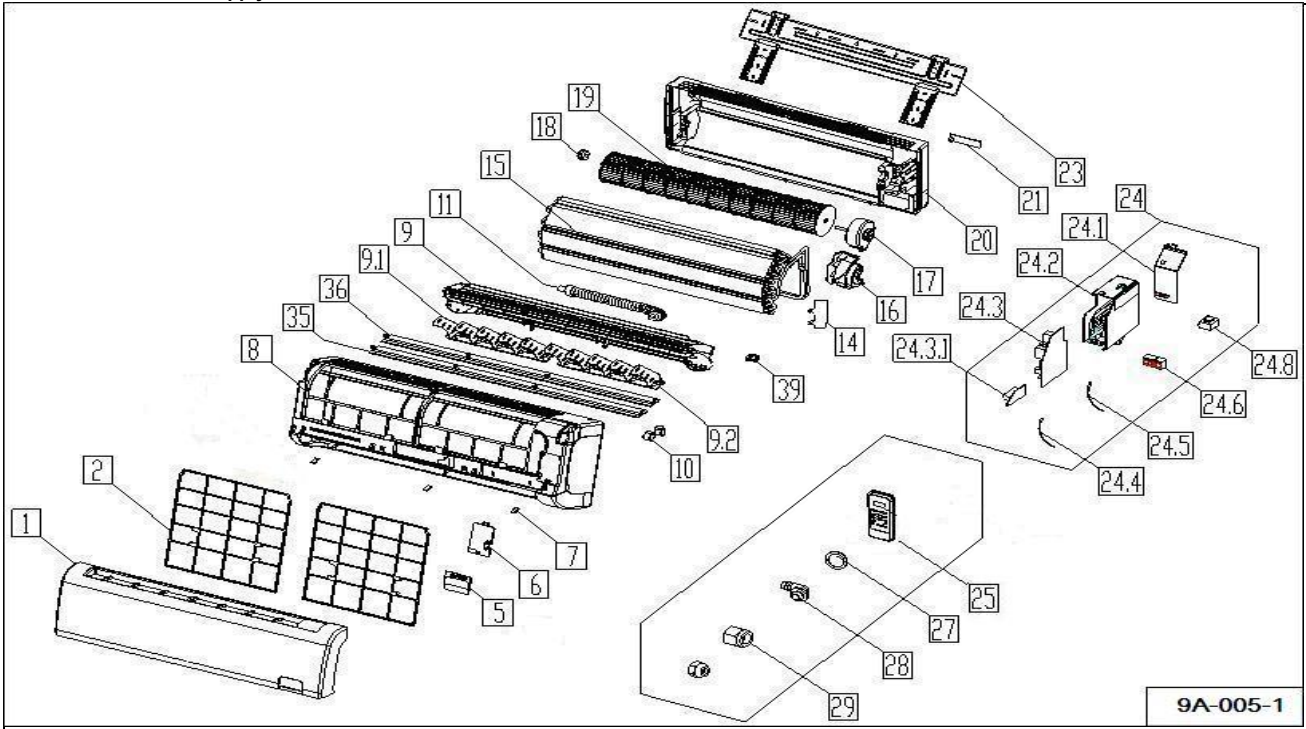


Model Number WB009AMFI19HLD-V1
ProdCode : 220032306730
Power Supply : 115V~ 60Hz 1Phase

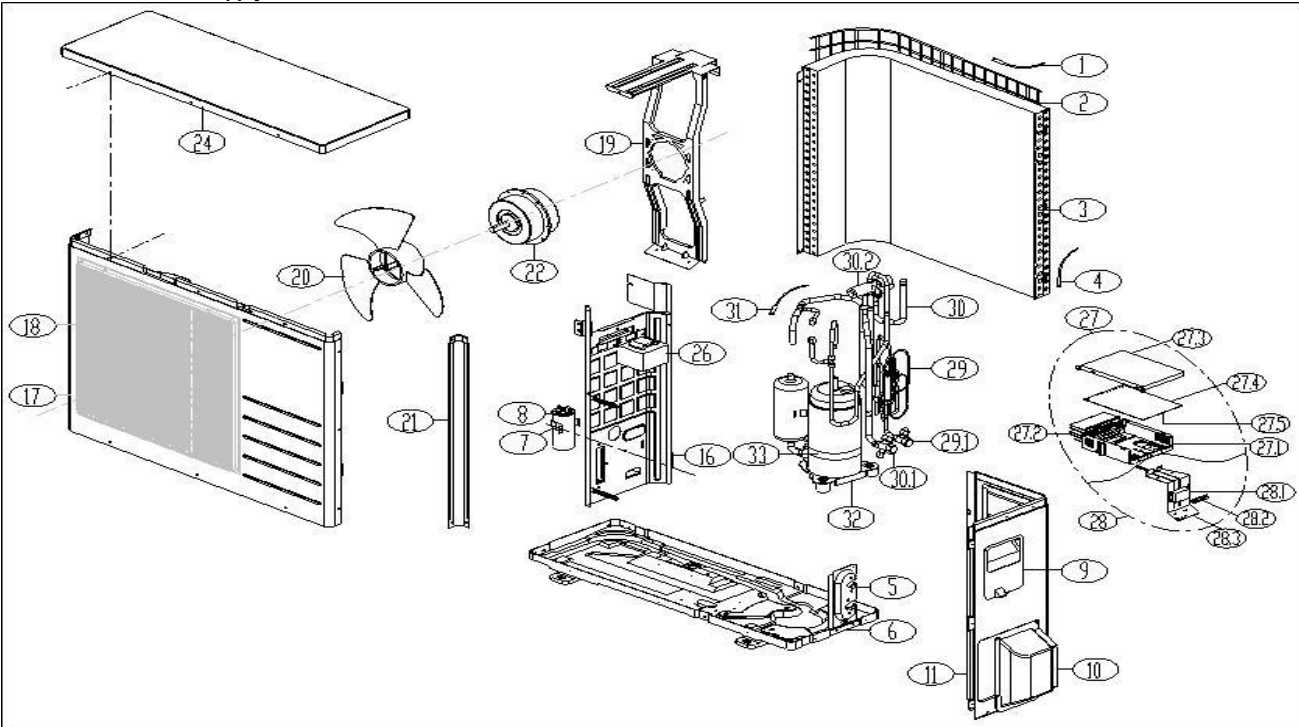
Serials: PRE 50130090



No.	Part Name	Quantity	BOM code	Bin Code	Remark
1	Panel assembly	1	201132890609	45.90	
2	Air filter	2	201132890704	5.70	
5	Display box assembly	1	203332890292	42.00	
6	Cover of indoor electronic control box	1	201132890658	1.90	
7	Screw cap	3	201132890619	1.90	
8	Panel frame assembly	1	201132890616	53.50	
9	Air outlet assembly	1	201132890273	47.80	
9.1	Vertical vane	12	201130290212	1.90	
9.2	Louver holder	3	201130210066	1.90	
10	Louver motor	1	202400200120	15.30	
11	Drain hose	1	201101020038	3.80	
14	Waterproof board	1	201130310350	1.90	
15	Evaporator assembly	1	201532390152	462.50	
16	Fan motor cover	1	201132790128	3.80	
17	Asynchronous motor	1	202400401182	135.70	
18	Bearing base	1	202730100201	1.90	
19	Cross flow fan	1	201100200014	46.30	
20	Chassis assembly	1	201132790555	86.00	
21	Pipe clamp board	1	201232800001	1.90	
23	Installation plate	1	201232790012	7.60	
24	Electronic control box assembly	1	203332390900	187.30	
24.1	Cover of electronic control box	1	201132800161	1.90	
24.2	Electronic control box	1	201130210069	17.20	
24.3	Main control board assembly	1	201332391075	118.50	
24.3.1	Fan motor capacitor	1	202401100992	7.60	
24.4	Ambient temperature sensor assembly	1	202433190000	1.90	
24.5	Pipe temperature sensor assembly	1	202301300080	3.30	
24.6	Wire joint	1	202301450119	5.70	
24.8	Transformer	1	202300900584	26.80	
25	Remote Controller	1	203355091469	21.00	
27	Seal ring	1	202720090001	1.90	
28	Drain connector	1	201101020011	1.90	
29	Nut	1	201600330001	1.90	
29	Nut	1	201600330002	1.90	
35	Horizontal louver (above)	1	201132890617	7.60	
36	Horizontal louver (below)	1	201132890618	7.60	
39	Fix clamp of temperature sensor	1	201102000305	1.90	

Model Number YN009AMFI19HLD-V1
ProdCode : 220037304850
Power Supply : 115V~ 60Hz 1Phase

Serials: PRE 50130090



No.	Part Name	Quantity	BOM code	Bin Code	Remark
1	Ambient temperature sensor assembly	1	202440220061	5.70	
2	Rear net	1	2011374G0003	3.80	
3	Condenser assembly	1	201537390033	521.80	
4	Pipe temperature sensor assembly	1	202440500004	3.80	
5	Valve plate	1	201237200282	3.80	
6	Chassis assembly	1	201237590093	70.70	
7	Capacitor clip	1	201200100005	1.90	
8	Capacitor of compressor	1	202401090021	26.80	
9	Big handle	1	201237390104	7.60	
10	Water collector	1	201137400000	7.60	
11	Rear right clapboard assembly	1	201237590080	38.20	
16	Partition board assembly	1	201237500259	22.80	
17	Front panel	1	201237400392	74.50	
18	Air outlet grille	1	201137590017	17.20	
19	Supporter assembly of fan motor	1	201237390026	22.90	
20	Axial flow fan	1	201100390002	53.50	
21	Left supporter	1	201237400400	5.70	
22	Asynchronous motor	1	202400370023	357.40	
24	Top cover assembly	1	201237400405	34.40	
26	Reactance	1	202301000860	55.40	
27	Electronic control box assembly	1	203337590071	540.90	
27.1	Electronic control box	1	201237300033	5.70	
27.2	Radiator	1	202301901043	36.30	
27.3	Cover of electronic control box	1	201237300162	5.70	
27.4	Main control board assembly	1	201337590054	493.10	
27.5	Supporter of electronic control box	1	201137300162	5.70	
28	Terminal board assembly	1	203337590046	36.30	
28.1	Wire joint	1	202301400223	9.60	
28.2	Insulation plate	1	201137300185	1.90	
28.3	Terminal board	1	201237590046	5.70	
29	Liquid valve assembly	1	201637391258	49.70	
29.1	Liquid valve	1	201600740523	17.60	
30	4-way valve assembly	1	201637391257	225.50	
30.1	Gas valve	1	201600720091	34.60	
30.2	4-Ways valve	1	201600690008	95.60	
31	Discharge temperature sensor assembly	1	202301310068	7.60	
32	Compressor	1	201400620600	837.40	
33	Crankcase electric heater	1	202403100508	26.80	

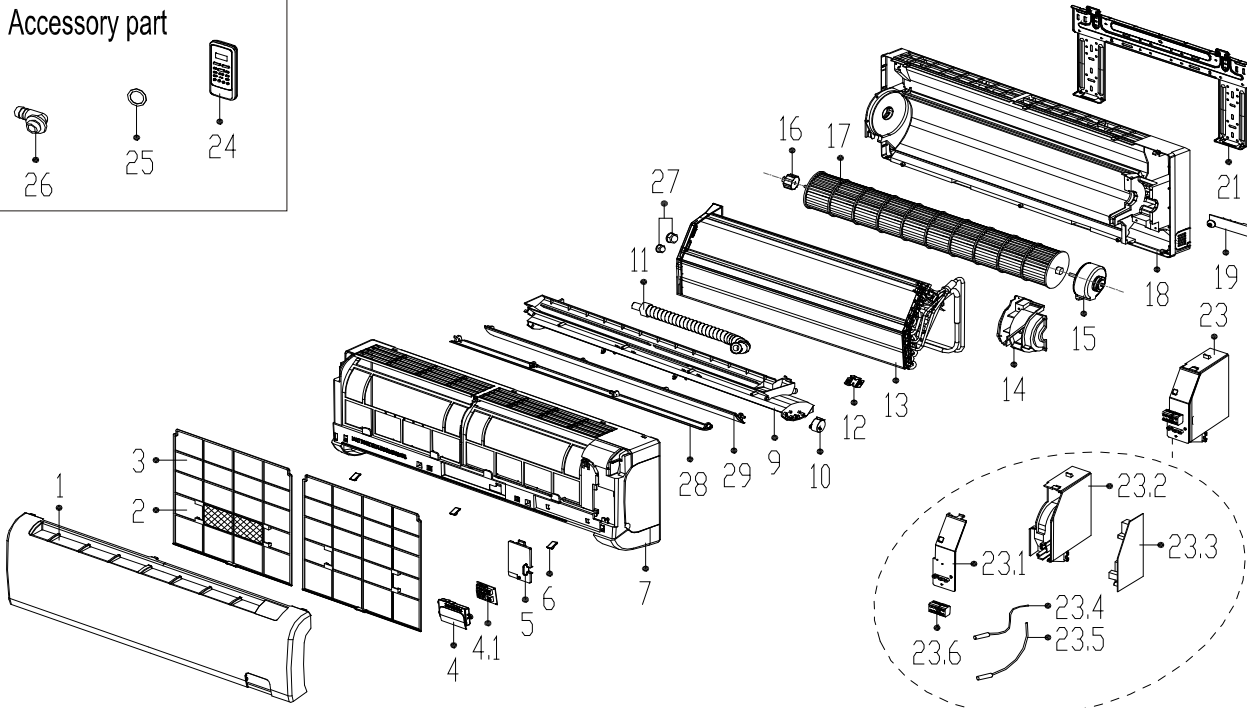
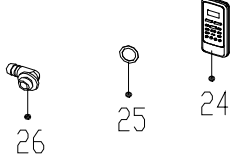
Model Number: WB009AMF119HLD-V2

ProdCode : 220032309330

Power Supply : 115V~ 60Hz 1Phase

Serials: 50130090 and Later

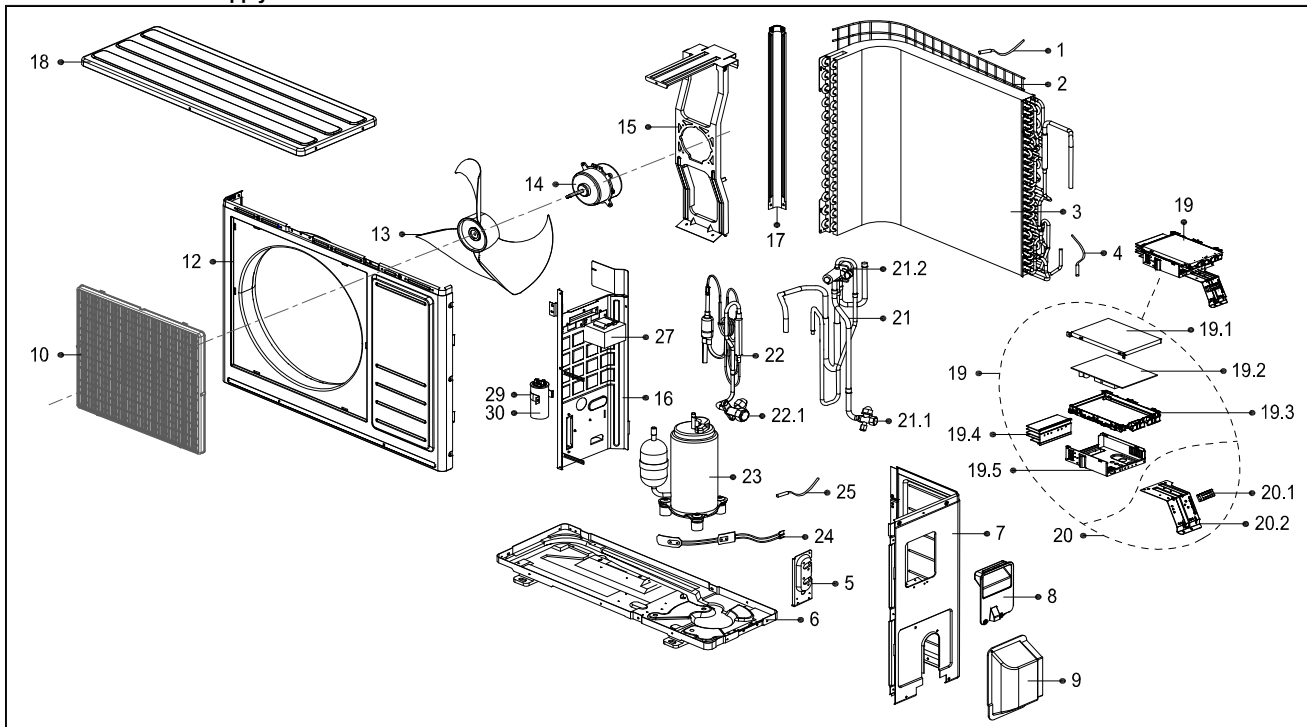
Accessory part



No.	Part Name	Quantity	BOM Code	Bin Code	Remark
1	Panel assembly	1	201132890609	46.80	
2	Air freshening filter	1	201131410703	0.90	
3	Air filter	2	201132890704	4.30	
4	Display box assembly	1	203332890292	39.30	
4.1	Display board assembly	1	201332391562	24.20	
5	Cover of electrical equipment	1	201132891878	1.70	
6	Screw cap	3	201132890619	0.20	
7	Panel frame assembly	1	201132890616	58.30	
9	Air outlet assembly	1	201132890273	51.20	
10	Louver motor	1	202400200120	16.40	
11	Drain hose	1	201101020038	3.70	
12	Fix clamp of temperature sensor	1	201102000305	0.20	
13	Evaporator assembly	1	201532390152	458.40	
14	Fan motor cover	1	201132790128	4.70	
15	Brushless DC Motor	1	202400300061	0.00	
16	Bearing base	1	202719900606	1.30	
17	Cross flow fan	1	201100200014	46.70	
18	Chassis assembly	1	201132790694	91.90	
19	Pipe clamp board	1	201232800103	0.90	
21	Installation plate	1	201232790012	14.90	
23	Electronic control box assembly	1	203332391158	0.00	
23.1	Cover of electronic control box	1	201132800161	2.90	
23.2	Electronic control box	1	201130210069	17.00	
23.3	Indoor main control board assembly	1	201332391725	0.00	
23.4	Ambient temperature sensor assembly	1	202433190000	2.90	
23.5	Pipe temperature sensor assembly	1	202301300080	4.30	
23.6	Wire joint	1	202301400488	7.00	
24	Remote Controller	1	203355091469	20.50	
25	Seal ring	1	202720090001	0.20	
26	Drain joint	1	201101020011	0.30	
27	Pipe nut	1	201600330001	0.20	
27	Pipe nut	1	201600330002	0.40	
28	Horizontal louver (above)	1	201132890617	9.00	
29	Horizontal louver (below)	1	201132890618	9.40	

Model Number: YN009AMFI19RPD-V2
Product Code : 220037306650
Power Supply : 115V~ 60Hz 1Phase

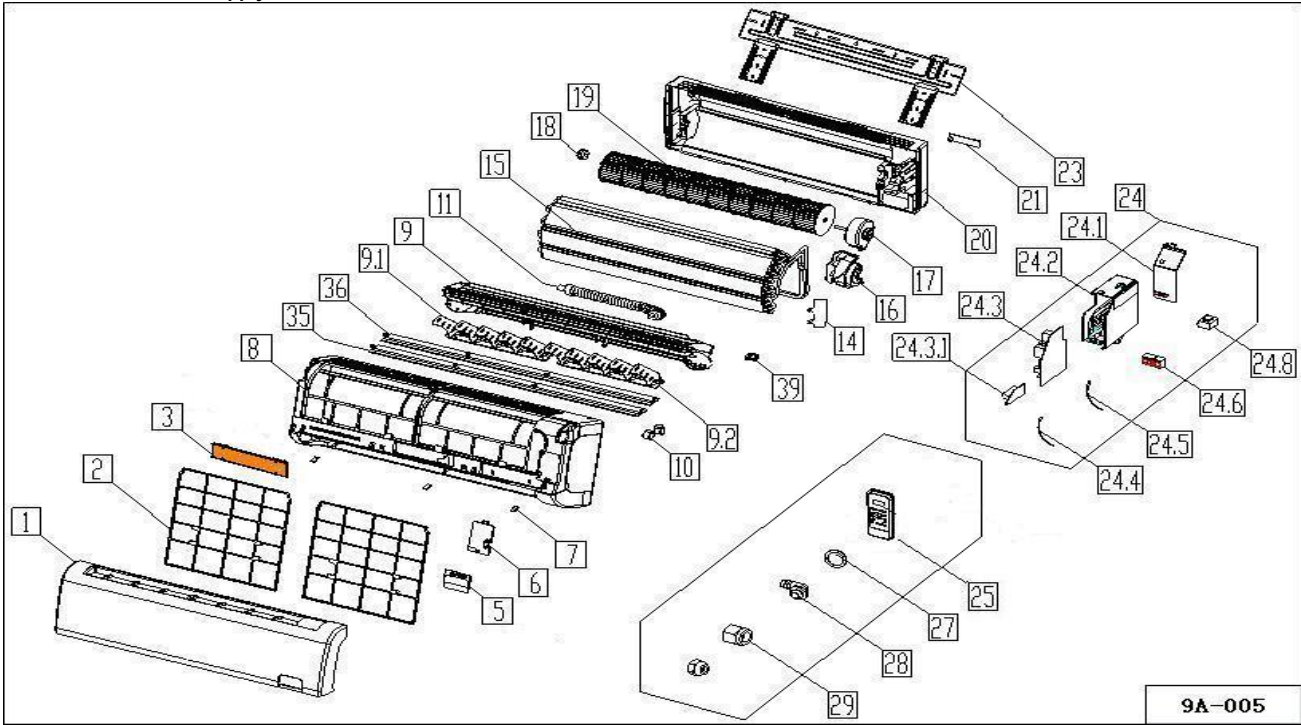
Serials: 50130090 and Later



No.	Part Name	Quantity	BOM Code	Bin Code	Remark
1	Ambient temperature sensor assembly	1	202440220061	3.70	
2	Rear net	1	2011374G0003	4.00	
3	Condenser assembly	1	201537390033	467.10	
4	Pipe temperature sensor assembly	1	202440500004	4.70	
5	Valve plate	1	201237200299	5.10	
6	Chassis assembly	1	201237590104	77.80	
7	Right clapboard assembly	1	201237590080	39.20	
8	Big handle	1	201237390104	5.70	
9	Water collector	1	201137400000	6.40	
10	Air outlet grille	1	201137590017	17.20	
12	Front panel	1	201237400392	75.50	
13	Axial flow fan	1	201100390002	52.40	
14	Brushless DC Motor	1	202400370023	322.90	
15	Supporter assembly of fan motor	1	201237390026	22.60	
16	Partition board assembly	1	201237500259	22.60	
17	Left supporter	1	201237400400	5.20	
18	Top cover assembly	1	201237900028	41.30	
19	Electronic control box assembly	1	203337390249	492.80	
19.1	Cover of electronic control box	1	201237300162	6.30	
19.2	Outdoor main control board assembly	1	201337390256	0.00	
19.3	Support of electronic control box	1	201137300162	5.00	
19.4	Radiator	1	202301990015	27.40	
19.5	Electronic installing box	1	201237300033	6.50	
20	Terminal board assembly	1	203337390258	49.60	
20.1	Wire joint	1	202301400482	0.00	
20.2	Terminal board	1	201237590046	5.50	
21	4-Ways valve assembly	1	201637391548	222.20	
21.1	Gas valve	1	201600720095	26.00	
21.2	4-Ways valve	1	201600690008	87.40	
22	Liquid valve assembly	1	201637391258	46.10	
22.1	Liquid valve	1	201600740523	17.70	
23	Compressor	1	201400620600	747.90	
24	Crankcase electric heater	1	202403100508	28.30	
25	Discharge temperature sensor assembly	1	202301310068	7.10	
27	Reactor	1	202301000860	56.90	
29	Capacitor clip	1	201200100005	0.40	
30	Capacitor of compressor	1	202401090021	27.10	

Model Number WB012AMFI19HLD-V1
ProdCode : 220032505980
Power Supply : 115V~ 60Hz 1Phase

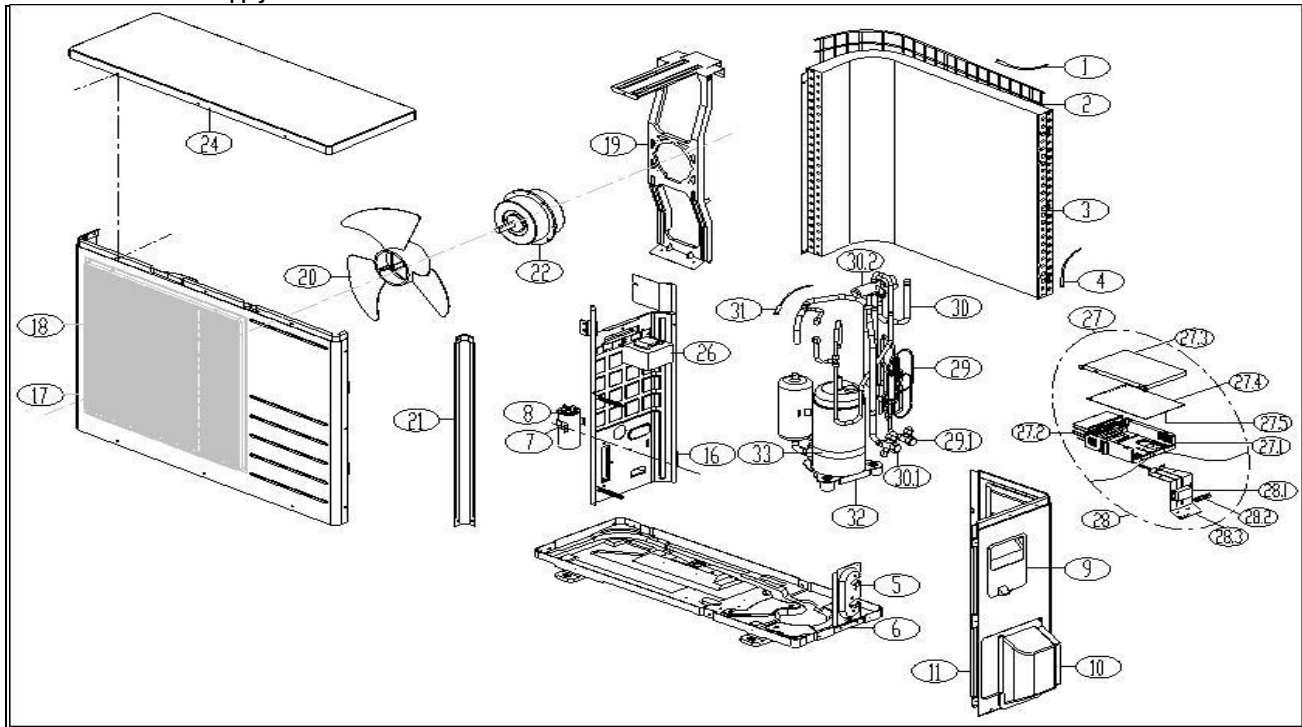
Serials: PRE 50130090



No.	Part Name	Quantity	BOM code	Bin Code	Remark
1	Panel assembly	1	201132890609	45.90	
2	Air filter	2	201132890704	5.70	
3	Air cleaner	1	201131410703	1.90	
5	Display box assembly	1	203332890292	42.00	
6	Cover of indoor electronic control box	1	201132890658	1.90	
7	Screw cap	3	201132890619	1.90	
8	Panel frame assembly	1	201132890616	53.50	
9	Air outlet assembly	1	201132890273	47.80	
9.1	Vertical vane	12	201130290212	1.90	
9.2	Louver holder	3	201130210066	1.90	
10	Louver motor	1	202400200120	15.30	
11	Drain hose	1	201101020038	3.80	
14	Waterproof board	1	201130310350	1.90	
15	Evaporator assembly	1	201532790059	483.50	
16	Fan motor cover	1	201132790128	3.80	
17	Asynchronous motor	1	202400401182	135.70	
18	Bearing base	1	202730100201	1.90	
19	Cross flow fan	1	201100200014	46.30	
20	Chassis assembly	1	201132790555	86.00	
21	Pipe clamp board	1	201232800001	1.90	
23	Installation plate	1	201232790012	7.60	
24	Electronic control box assembly	1	203332590975	301.30	
24.1	Cover of electronic control box	1	201132800161	1.90	
24.2	Electronic control box	1	201130210069	17.20	
24.3	Main control board assembly	1	201332590829	118.50	
24.3.1	Fan motor capacitor	1	202401100992	7.60	
24.4	Ambient temperature sensor assembly	1	202432390005	3.80	
24.5	Pipe temperature sensor assembly	1	202301300080	3.30	
24.6	Wire joint	1	202301450119	5.70	
24.8	Transformer	1	202300900584	26.80	
25	Remote Controller	1	203355091469	21.00	
27	Seal ring	1	202720090001	1.90	
28	Drain connector	1	201101020011	1.90	
29	Nut	1	201600330001	1.90	
	Nut	1	201600330003	1.90	
35	Horizontal louver (above)	1	201132890617	7.60	
36	Horizontal louver (below)	1	201132890618	7.60	
39	Fix clamp of temperature sensor	1	201102000305	1.90	

Model Number YN012AMFI19RPD-V1
ProdCode : 220037504661
Power Supply : 115V~ 60Hz 1Phase

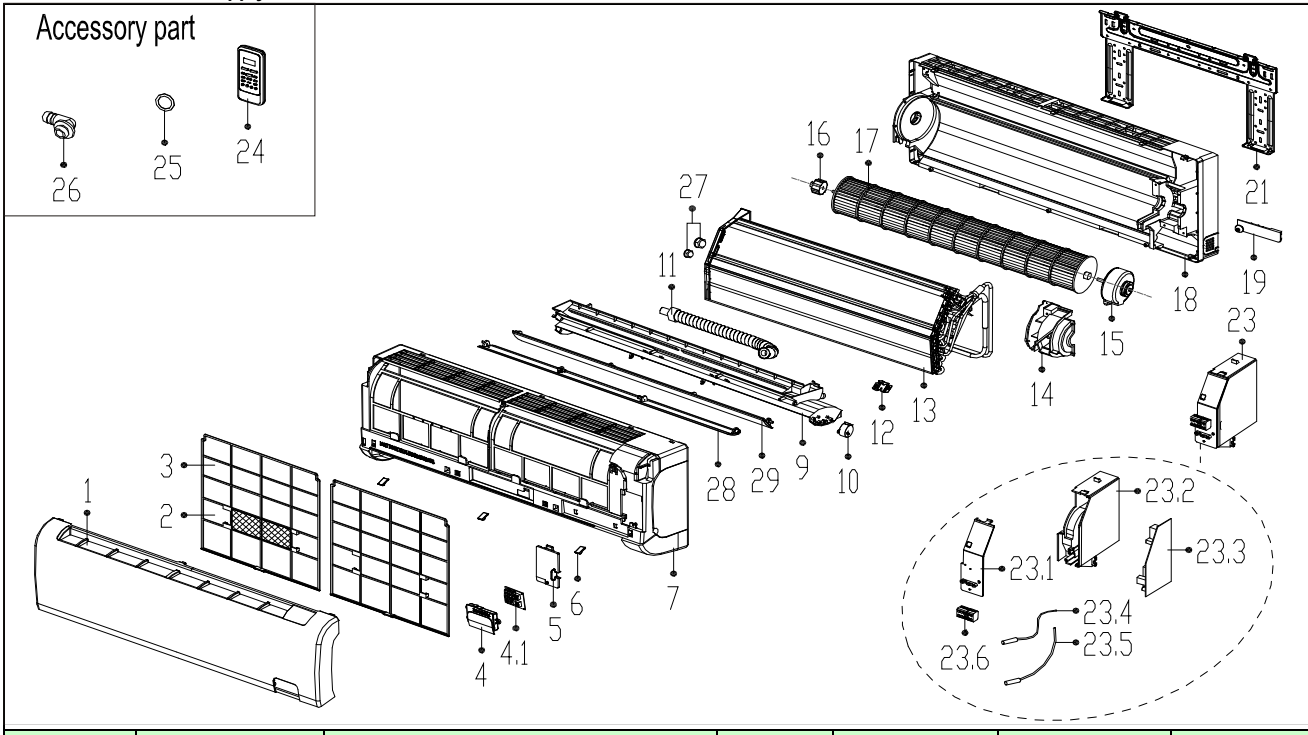
Serials: PRE 50130090



No.	Part Name	Quantity	BOM code	Bin Code	Remark
1	Ambient temperature sensor assembly	1	202301310063	3.80	
2	Rear net	1	2011374G0003	3.80	
3	Condenser assembly	1	201537490008	617.30	
4	Pipe temperature sensor assembly	1	202440500004	3.80	
5	Valve plate	1	201237200282	3.80	
6	Chassis assembly	1	201237590091	72.60	
7	Capacitor clip	1	201200100005	1.90	
8	Capacitor of compressor	1	202401090021	26.80	
9	Big handle	1	201237390104	7.60	
10	Water collector	1	201137400000	7.60	
11	Rear right clapboard assembly	1	201237590080	38.20	
16	Partition board assembly	1	201237500259	22.80	
17	Front panel	1	201237400392	74.50	
18	Air outlet grille	1	201137590017	17.20	
19	Supporter assembly of fan motor	1	201237390026	22.90	
20	Axial flow fan	1	201100390002	53.50	
21	Left supporter	1	201237400400	5.70	
22	Asynchronous motor	1	202400370023	357.40	
24	Top cover assembly	1	201237400405	34.40	
26	Reactance	1	202301000860	55.40	
27	Electronic control box assembly	1	203337590071	540.90	
27.1	Electronic control box	1	201237300033	5.70	
27.2	Radiator	1	202301901043	36.30	
27.3	Cover of electronic control box	1	201237300162	5.70	
27.4	Main control board assembly	1	201337590054	493.10	
27.5	Supporter of electronic control box	1	201137300162	5.70	
28	Terminal board assembly	1	203337590046	36.30	
28.1	Wire joint	1	202301400223	9.60	
28.2	Insulation plate	1	201137300185	1.90	
28.3	Terminal board	1	201237590046	5.70	
29	Liquid valve assembly	1	201637490232	51.60	
29.1	Liquid valve	1	201600740523	17.60	
30	4-way valve assembly	1	201637591340	240.20	
30.1	Gas valve	1	201600720195	36.30	
30.2	4-Ways valve	1	201600690008	95.60	
31	Discharge temperature sensor assembly	1	202301310068	7.60	
32	Compressor	1	201400620600	837.40	
33	Crankcase electric heater	1	202403100508	26.80	

Model Number: WB012AMF119HLD-V2
Product Code : 220032507780
Power Supply : 115V~ 60Hz 1Phase

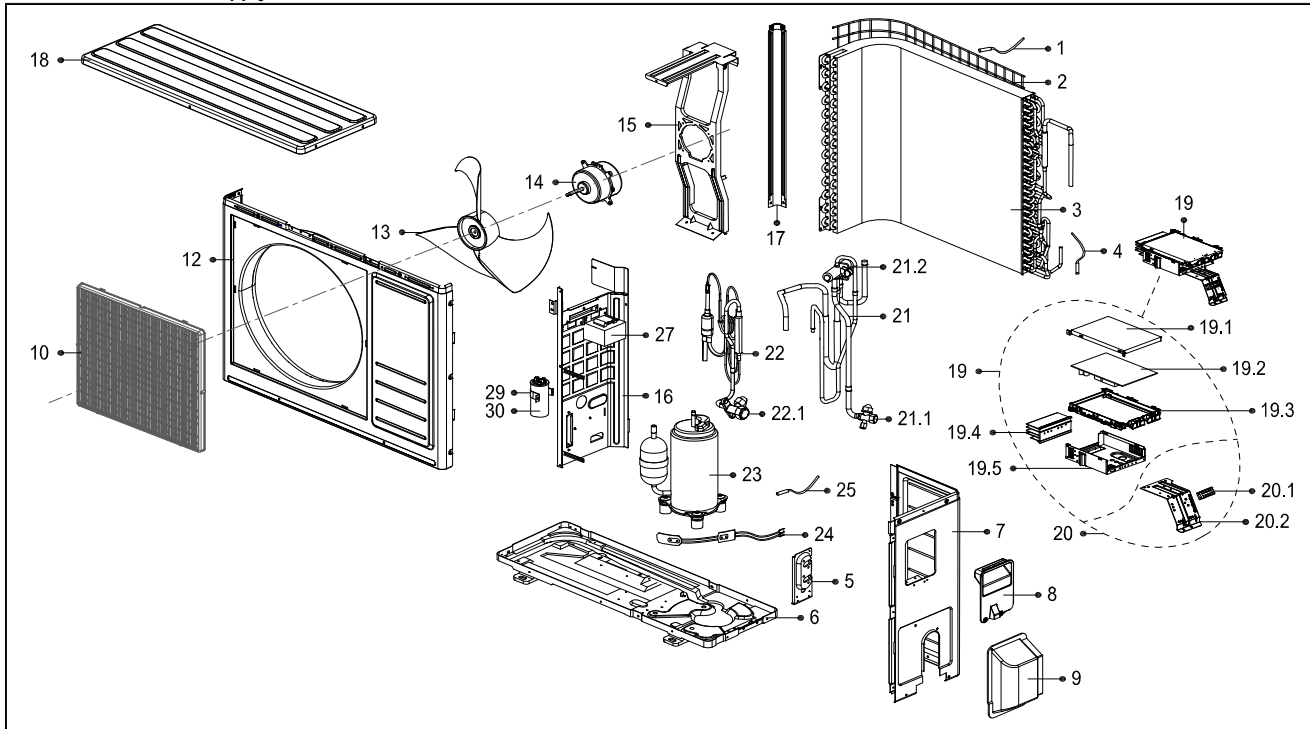
Serials: 50130090 and Later



No.	Part Name	Quantity	BOM Code	Bin Code	Remark
1	Panel assembly	1	201132890609	46.80	
2	Air freshening filter	1	201131410703	0.90	
3	Air filter	2	201132890704	4.30	
4	Display box assembly	1	203332890292	39.30	
4.1	Display board assembly	1	201332391562	24.20	
5	Cover of electrical equipment	1	201132891878	1.70	
6	Screw cap	3	201132890619	0.20	
7	Panel frame assembly	1	201132890616	58.30	
9	Air outlet assembly	1	201132890273	51.20	
10	Louver motor	1	202400200120	16.40	
11	Drain hose	1	201101020038	3.70	
12	Fix clamp of temperature sensor	1	201102000305	0.20	
13	Evaporator assembly	1	201532790059	466.30	
14	Fan motor cover	1	201132790128	4.70	
15	Brushless DC Motor	1	202400300061	0.00	
16	Bearing base	1	202719900606	1.30	
17	Cross flow fan	1	201100200014	46.70	
18	Chassis assembly	1	201132790694	91.90	
19	Pipe clamp board	1	201232800103	0.90	
21	Installation plate	1	201232790012	14.90	
23	Electronic control box assembly	1	203332591208	0.00	
23.1	Cover of electronic control box	1	201132800161	2.90	
23.2	Electronic control box	1	201130210069	17.00	
23.3	Indoor main control board assembly	1	201332591226	0.00	
23.4	Ambient temperature sensor assembly	1	202433190000	2.90	
23.5	Pipe temperature sensor assembly	1	202301300080	4.30	
23.6	Wire joint	1	202301400488	7.00	
24	Remote Controller	1	203355091469	20.50	
25	Seal ring	1	202720090001	0.20	
26	Drain joint	1	201101020011	0.30	
27	Pipe nut	1	201600330001	0.20	
27	Pipe nut	1	201600330003	0.40	
28	Horizontal louver (above)	1	201132890617	9.00	
29	Horizontal louver (below)	1	201132890618	9.40	

Model Number: YN012AMFI19RPD-V2
Product Code : 220037506260
Power Supply : 115V~ 60Hz 1Phase

Serials: 50130090 and Later

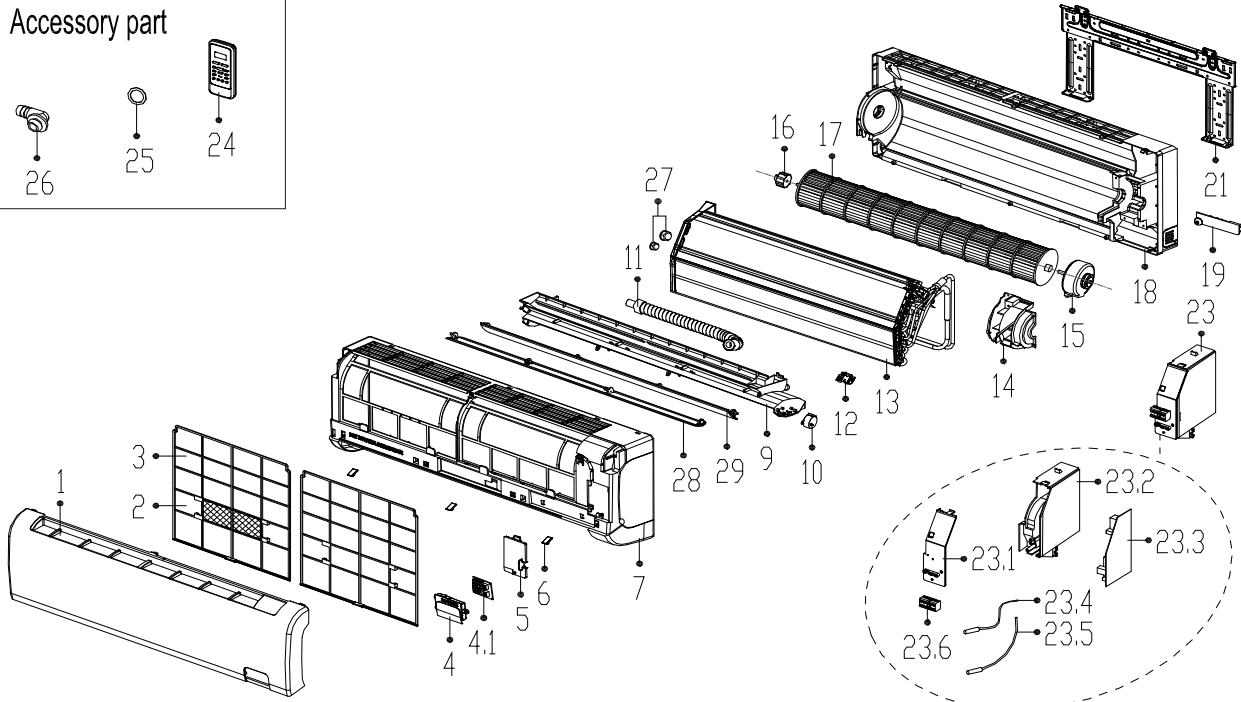
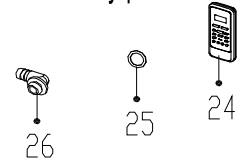


No.	Part Name	Quantity	BOM Code	Bin Code	Remark
1	Ambient temperature sensor assembly	1	202301310063	4.00	
2	Rear net	1	2011374G0003	4.00	
3	Condenser assembly	1	201537490008	553.60	
4	Pipe temperature sensor assembly	1	202440500004	4.70	
5	Valve plate	1	201237200299	5.10	
6	Chassis assembly	1	201237590105	80.30	
7	Right clapboard assembly	1	201237590080	39.20	
8	Big handle	1	201237390104	5.70	
9	Water collector	1	201137400000	6.40	
10	Air outlet grille	1	201137590017	17.20	
12	Front panel	1	201237400392	75.50	
13	Axial flow fan	1	201100390002	52.40	
14	Brushless DC Motor	1	202400370023	322.90	
15	Supporter assembly of fan motor	1	201237390026	22.60	
16	Partition board assembly	1	201237500259	22.60	
17	Left supporter	1	201237400400	5.20	
18	Top cover assembly	1	201237900028	41.30	
19	Electronic control box assembly	1	203337390249	492.80	
19.1	Cover of electronic control box	1	201237300162	6.30	
19.2	Outdoor main control board assembly	1	201337390256	0.00	
19.3	Support of electronic control box	1	201137300162	5.00	
19.4	Radiator	1	202301990015	27.40	
19.5	Electronic installing box	1	201237300033	6.50	
20	Terminal board assembly	1	203337390258	49.60	
20.1	Wire joint	1	202301400482	0.00	
20.2	Terminal board	1	201237590046	5.50	
21	4-Ways valve assembly	1	201637591482	0.00	
21.1	Gas valve	1	201600720195	32.80	
21.2	4-Ways valve	1	201600690008	87.40	
22	Liquid valve assembly	1	201637591155	30.90	
22.1	Liquid valve	1	201600740523	17.70	
23	Compressor	1	201400620600	747.90	
24	Crankcase electric heater	1	202403100508	28.30	
25	Discharge temperature sensor assembly	1	202301310068	7.10	
27	Reactor	1	202301000860	56.90	
29	Capacitor clip	1	201200100005	0.40	
30	Capacitor of compressor	1	202401090021	27.10	

Model Number: WB012GMFI19HLD-V2
Product Code : 220032507760
Power Supply : 208-230V~ 60Hz 1Phase

Serials: 50130090 and Later

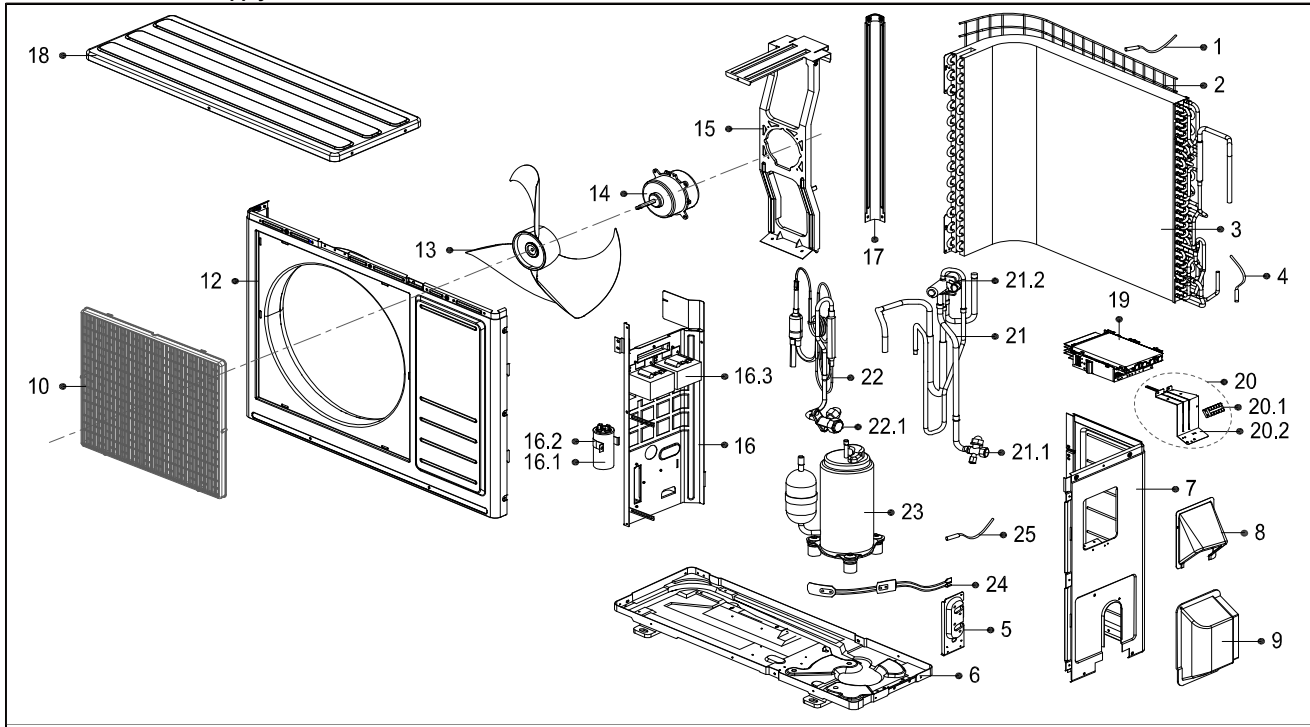
Accessory part



No.	Part Name	Quantity	BOM Code	Bin Code	Remark
1	Panel assembly	1	201132890609	46.80	
2	Air freshening filter	1	201131410703	0.90	
3	Air filter	2	201132890704	4.30	
4	Display box assembly	1	203332890292	39.30	
4.1	Display board assembly	1	201332391562	24.20	
5	Cover of electrical equipment	1	201132891878	1.70	
6	Screw cap	3	201132890619	0.20	
7	Panel frame assembly	1	201132890616	58.30	
9	Air outlet assembly	1	201132890273	51.20	
10	Louver motor	1	202400200120	16.40	
11	Drain hose	1	201101020038	3.70	
12	Fix clamp of temperature sensor	1	201102000305	0.20	
13	Evaporator assembly	1	201532790059	466.30	
14	Fan motor cover	1	201132790128	4.70	
15	Brushless DC Motor	1	202400300517	254.30	
16	Bearing base	1	202719900606	1.30	
17	Cross flow fan	1	201100200014	46.70	
18	Chassis assembly	1	201132790694	91.90	
19	Pipe clamp board	1	201232800103	0.90	
21	Installation plate	1	201232790012	14.90	
23	Electronic control box assembly	1	203332591206	0.00	
23.1	Cover of electronic control box	1	201132800161	2.90	
23.2	Electronic control box	1	201130210069	17.00	
23.3	Indoor main control board assembly	1	201332591224	0.00	
23.4	Ambient temperature sensor assembly	1	202433190000	2.90	
23.5	Pipe temperature sensor assembly	1	202301300080	4.30	
23.6	Wire joint	1	202301400488	7.00	
24	Remote Controller	1	203355091469	20.50	
25	Seal ring	1	202720090001	0.20	
26	Drain joint	1	201101020011	0.30	
27	Pipe nut	1	201600330001	0.20	
27	Pipe nut	1	201600330003	0.40	
28	Horizontal louver (above)	1	201132890617	9.00	
29	Horizontal louver (below)	1	201132890618	9.40	

Sale Model : YN012GMFI19RPD-V2
Product Code : 220037506240
Power Supply : 208-230V~ 60Hz 1Phase

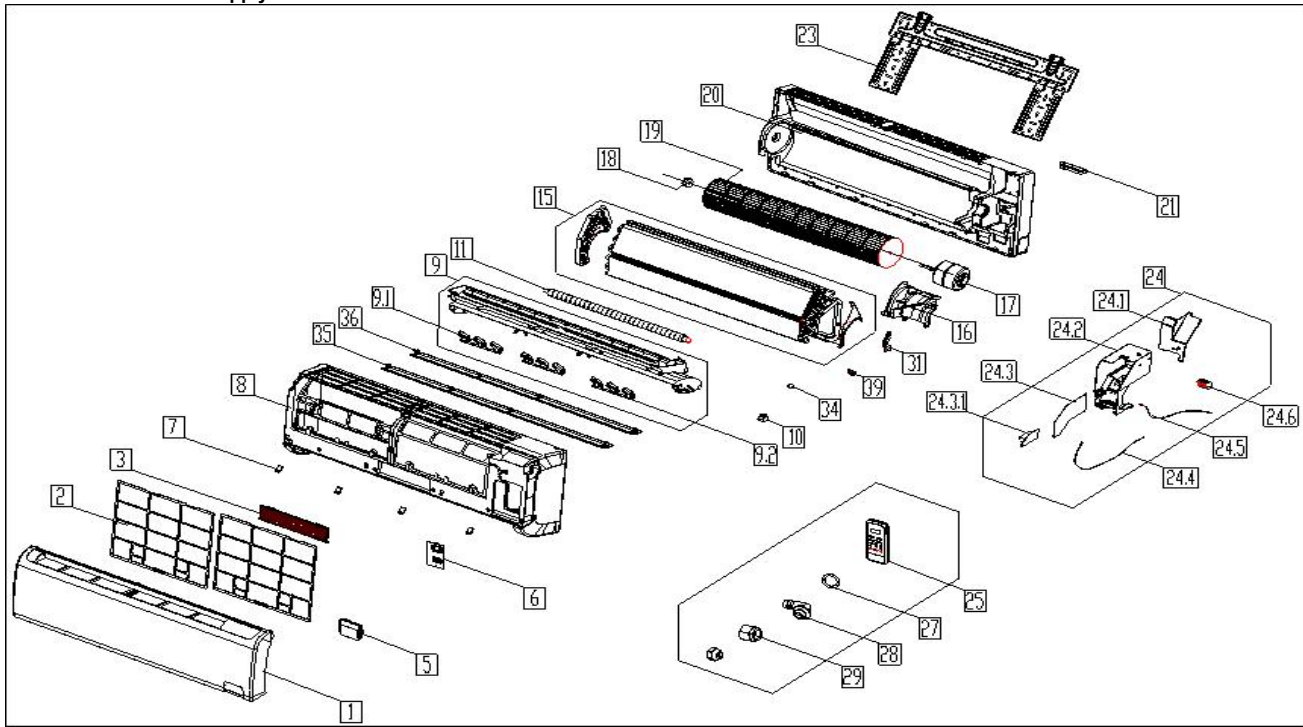
Serials: 50130090 and Later



No.	Part Name	Quantity	BOM Code	Bin Code	Remark
1	Ambient temperature sensor assembly	1	202301310063	4.00	
2	Rear net	1	2011374G0003	4.00	
3	Condenser assembly	1	201537490008	553.60	
4	Pipe temperature sensor assembly	1	202440500004	4.70	
5	Valve plate	1	201237200299	5.10	
6	Chassis assembly	1	201237590104	77.80	
7	Right clapboard assembly	1	201237590080	39.20	
8	Big handle	1	201237390104	5.70	
9	Water collector	1	201137400000	6.40	
10	Air outlet grille	1	201137590017	17.20	
12	Front panel	1	201237400392	75.50	
13	Axial flow fan	1	201100390002	52.40	
14	Brushless DC Motor	1	202400370023	322.90	
15	Supporter assembly of fan motor	1	201237390026	22.60	
16	Partition board assembly	1	201237500225	194.10	
16.1	Capacitor of compressor	1	202401000612	23.50	
16.2	Capacitor clip	1	201200100002	0.30	
16.3	Reactor	1	202301000820	61.10	
16.3	Reactor	1	202301000819	57.20	
17	Left supporter	1	201237400400	5.20	
18	Top cover assembly	1	201237900028	41.30	
19	Electronic control box assembly	1	203337390250	558.80	
20	Terminal board assembly	1	203337590049	49.30	
20.1	Wire joint	1	202301400256	22.90	
20.2	Terminal board	1	201237590046	5.50	
21	4-Ways valve assembly	1	201637591478	232.40	
21.1	Gas valve	1	201600720195	32.80	
21.2	4-Ways valve	1	201600600521	86.10	
22	Liquid valve assembly	1	201637591155	30.90	
22.1	Liquid valve	1	201600740523	17.70	
23	Compressor	1	201400620600	747.90	
24	Crankcase electric heater	1	202403100501	24.40	
25	Discharge temperature sensor assembly	1	202301310068	7.10	

Sale model : WB018GMFI19HLD-V1
 ProdCode : 220032803960
 Power Supply : 208-230V~ 60Hz 1Phase

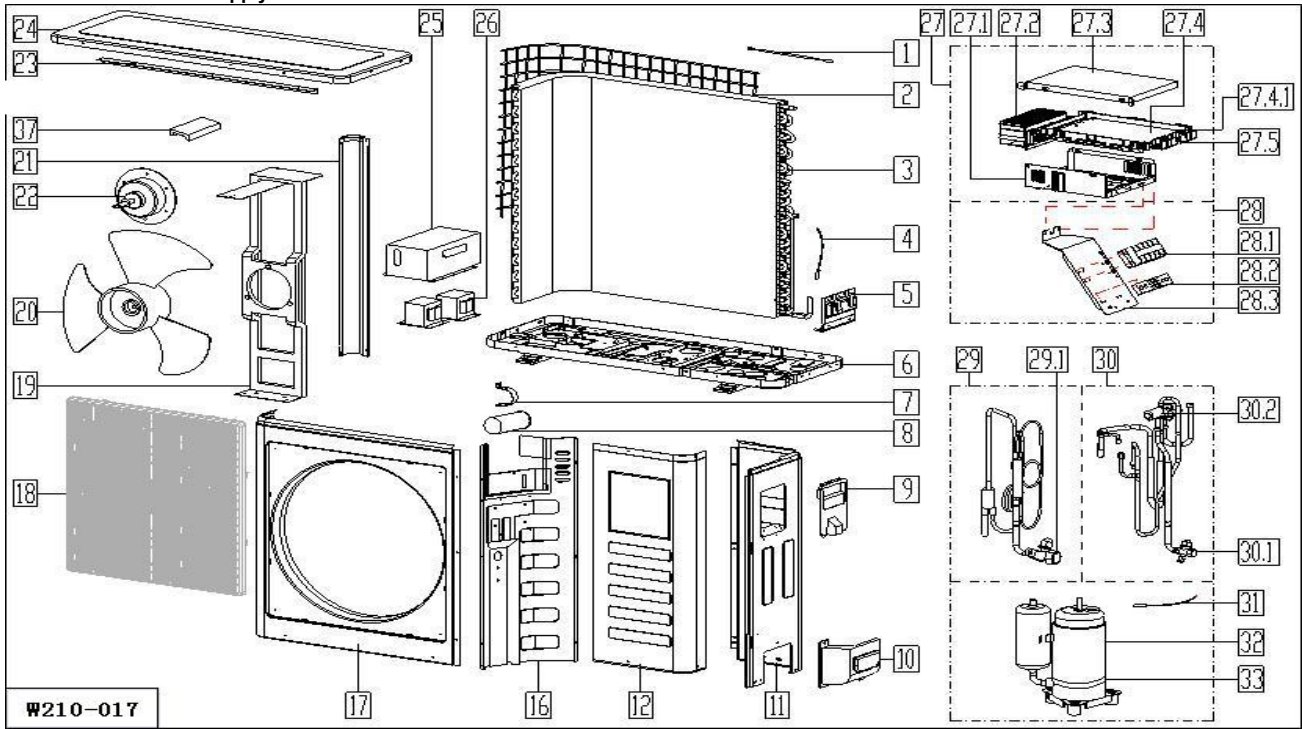
Serials: Pre 50130090



No.	Part Name	Quantity	BOM code	Bin Code	Remark
1	Panel assembly	1	201133090455	45.90	
2	Air filter	2	201133091017	5.70	
3	Air cleaner	1	201131410703	1.90	
5	Display box assembly	1	203332890292	42.00	
6	Cover of indoor electronic control box	1	201133090452	1.90	
7	Screw cap	4	201133090623	1.90	
8	Panel frame assembly	1	201133090938	68.80	
9	Air outlet assembly	1	201133090458	49.70	
9.1	Vertical vane	12	201133090440	1.90	
9.2	Louver holder	3	201132800079	1.90	
10	Louver motor	1	202400200004	22.90	
11	Drain hose	1	201101020038	3.80	
15	Evaporator assembly	1	201532990038	418.60	
16	Fan motor cover	1	201133090196	3.80	
17	Asynchronous motor	1	202400400931	185.40	
18	Bearing base	1	202730100201	1.90	
19	Cross flow fan	1	2011002G0001	44.00	
20	Chassis assembly	1	201133090422	99.40	
21	Pipe clamp board	1	201232800001	1.90	
23	Installation plate	1	201232990002	19.00	
24	Electronic control box assembly	1	203332890400	204.50	
24.1	Cover of electronic control box	1	201133090166	3.80	
24.2	Electronic control box	1	201133090165	17.20	
24.3	Main control board assembly	1	201332890369	164.40	
24.3.1	Fan motor capacitor	1	202401290009	3.80	
24.4	Ambient temperature sensor assembly	1	202301300210	3.80	
24.5	Pipe temperature sensor assembly	1	202301300077	3.80	
24.6	Wire joint	1	202301450119	5.70	
25	Remote Controller	1	203355091469	21.00	
27	Seal ring	1	202720090001	1.90	
28	Drain connector	1	201101020011	1.90	
29	Nut	1	201600330002	1.90	
29	Nut	1	201600330004	1.90	
31	Fixing board of fan motor	1	201133090167	1.90	
34	insulated axis	2	201131390149	1.90	
35	Horizontal louver (above)	1	201133090939	11.50	
36	Horizontal louver (below)	1	201133090940	11.50	
39	Fix clamp of temperature sensor	1	201102000305	1.90	

Model Number YN018GMFI19RPD-V1
ProdCode : 220037803120
Power Supply : 208-230V~ 60Hz 1Phase

Serials: Pre 50130090

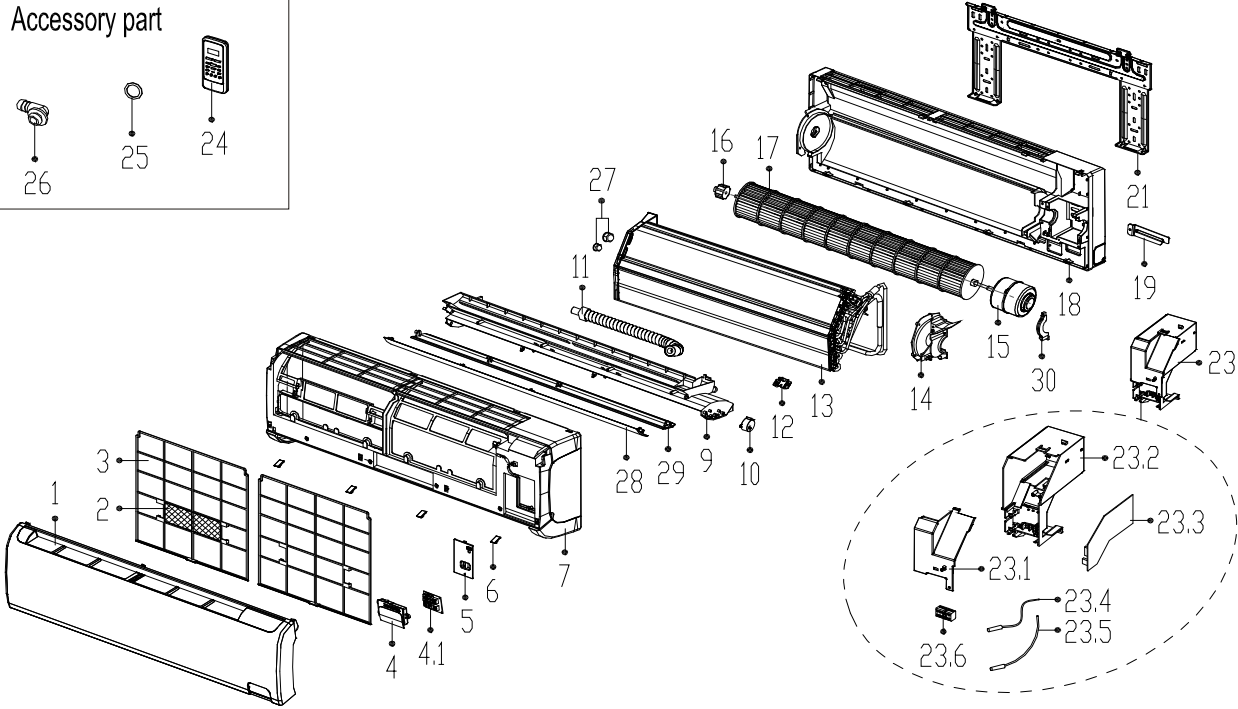
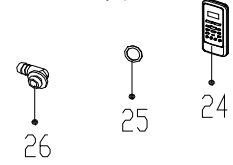


No.	Part Name	Quantity	BOM code	Bin Code	Remark
1	Ambient temperature sensor assembly	1	202301310075	3.80	
2	Rear net	1	2011481G0001	7.70	
3	Condenser assembly	1	201537990036	573.40	
4	Pipe temperature sensor assembly	1	202440500004	3.80	
5	Valve plate	1	201237300285	3.80	
6	Chassis assembly	1	201257090054	93.60	
7	Capacitor clip	1	201200100005	1.90	
8	Capacitor of compressor	1	202401000612	24.80	
9	Big handle	1	201237390104	7.60	
10	Water collector	1	201137390017	3.80	
11	Rear right clapboard assembly	1	201237890100	45.90	
12	Front right clapboard assembly	1	201248100389	43.50	
16	Partition board assembly	1	201237790031	42.00	
17	Front panel	1	201248100359	51.60	
18	Air outlet grille	1	201237890112	26.80	
19	Supporter assembly of fan motor	1	201257090031	42.00	
20	Axial flow fan	1	201145500002	54.80	
21	Left supporter	1	201248100367	9.60	
22	Asynchronous motor	1	202400300033	424.30	
23	Rear supporter	1	201248100384	5.70	
24	Top cover assembly	1	201248100363	44.00	
25	Cover of inductance	1	201248090001	11.50	
26	Reactance	1	202301050026	147.20	
26	Reactance	1	202301000819	61.20	
27	Electronic control box assembly	1	203337890266	712.90	
27.1	Electronic control box	1	201237300033	5.70	
27.2	Radiator	1	202301900112	61.20	
27.3	Cover of electronic control box	1	201237300162	5.70	
27.4	Main control board assembly	1	201337890010	644.10	
27.5	Supporter of electronic control box	1	201137300162	5.70	
28	Terminal board assembly	1	203337990161	30.60	
28.1	Wire joint	1	202301450118	5.70	
28.2	Insulation plate	1	201137300185	1.90	
28.3	Terminal board	1	201237890064	3.80	
29	Liquid valve assembly	1	201637890878	53.50	
29.1	Liquid valve	1	201600740704	24.80	
30	4-way valve assembly	1	201637990487	246.50	
30.1	Gas valve	1	201600720296	47.80	
30.2	4-Ways valve	1	201600690011	107.80	
31	Discharge temperature sensor assembly	1	202301310068	7.60	
32	Compressor	1	201400600530	1675.70	
33	Crankcase electric heater	1	202403100501	24.80	
37	Fan motor fixing foam	1	202245500001	1.90	
42	Clamp of front net	8	201135110801	1.90	

Sale model : WB018GMFI19HLD-V2
 ProdCode : 220032806210
 Power Supply : 208-230V~ 60Hz 1Phase

Serials: 50130090 and Later

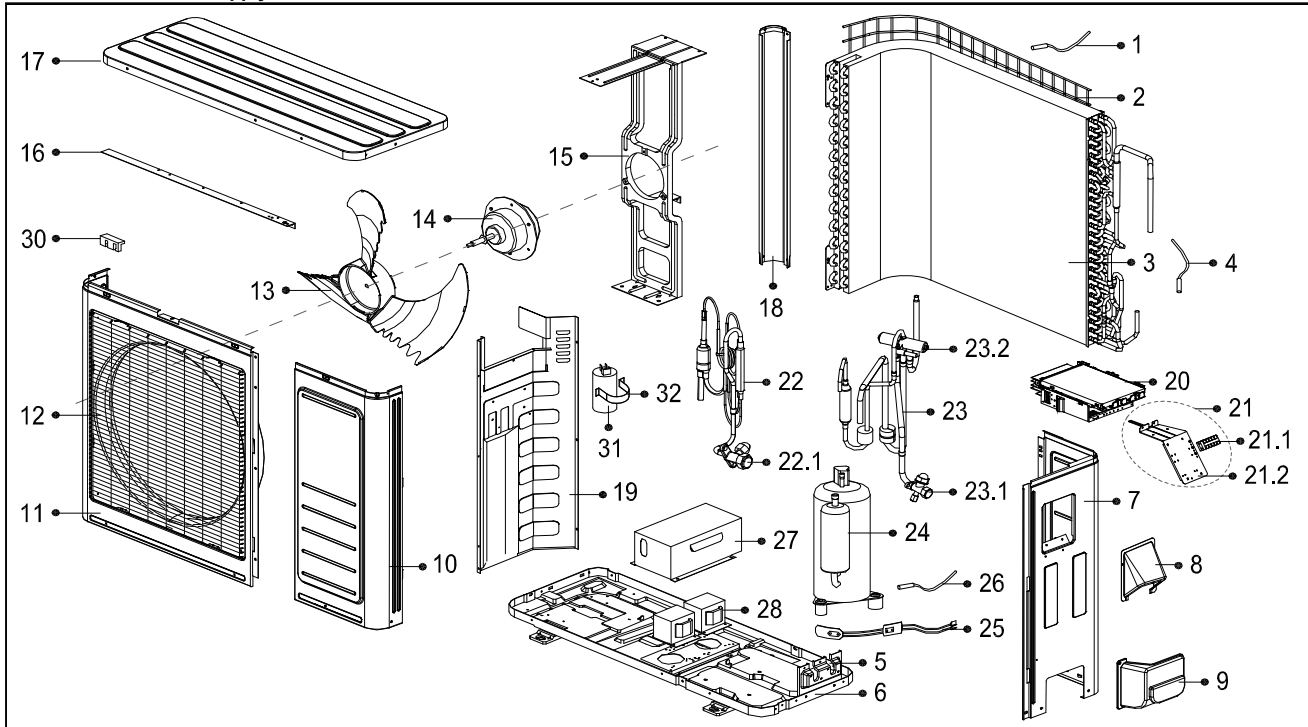
Accessory part



No.	Part Name	Quantity	BOM code	Bin Code	Remark
1	Panel assembly	1	201133090455	52.10	
2	Air freshening filter	1	201131410703	0.90	
3	Air filter	2	201133091017	6.10	
4	Display box assembly	1	203332890279	31.60	
4.1	Display board assembly	1	201332190314	13.70	
5	Cover of electrical equipment	1	201133091147	2.70	
6	Screw cap	4	201133090623	0.20	
7	Panel frame assembly	1	201133090938	73.90	
9	Air outlet assembly	1	201133090458	58.10	
10	Louver motor	1	202400200004	23.70	
11	Drain hose	1	201101020038	3.70	
12	Fix clamp of temperature sensor	1	201102000305	0.20	
13	Evaporator assembly	1	201532990044	389.40	
14	Fan motor cover	1	201133090196	3.10	
15	Brushless DC Motor	1	202400300064	361.40	
16	Bearing base	1	202719900606	1.30	
17	Cross flow fan	1	2011002G0001	44.20	
18	Chassis assembly	1	201133091047	108.00	
19	Pipe clamp board	1	201232800103	0.90	
21	Installation plate	1	201232990002	21.80	
23	Electronic control box assembly	1	203332890616	0.00	
23.1	Cover of electronic control box	1	201133090166	3.80	
23.2	Electronic control box	1	201133090165	17.50	
23.3	Indoor main control board assembly	1	201332890679	0.00	
23.4	Ambient temperature sensor assembly	1	202301300210	3.70	
23.5	Pipe temperature sensor assembly	1	202301300077	3.60	
23.6	Wire joint	1	202301400488	7.00	
24	Remote Controller	1	203355091469	20.50	
25	Seal ring	1	202720090001	0.20	
26	Drain joint	1	201101020011	0.30	
27	Pipe nut	1	201600330004	0.50	
27	Pipe nut	1	201600330002	0.40	
28	Horizontal louver (above)	1	201133090939	12.00	
29	Horizontal louver (below)	1	201133090940	12.00	
30	Fixing board of fan motor	1	201133090167	0.80	

Sale Model : YN018GMFI19RPD-V2
 Product Code : 220037804670
 Power Supply : 208-230V~ 60Hz 1Phase

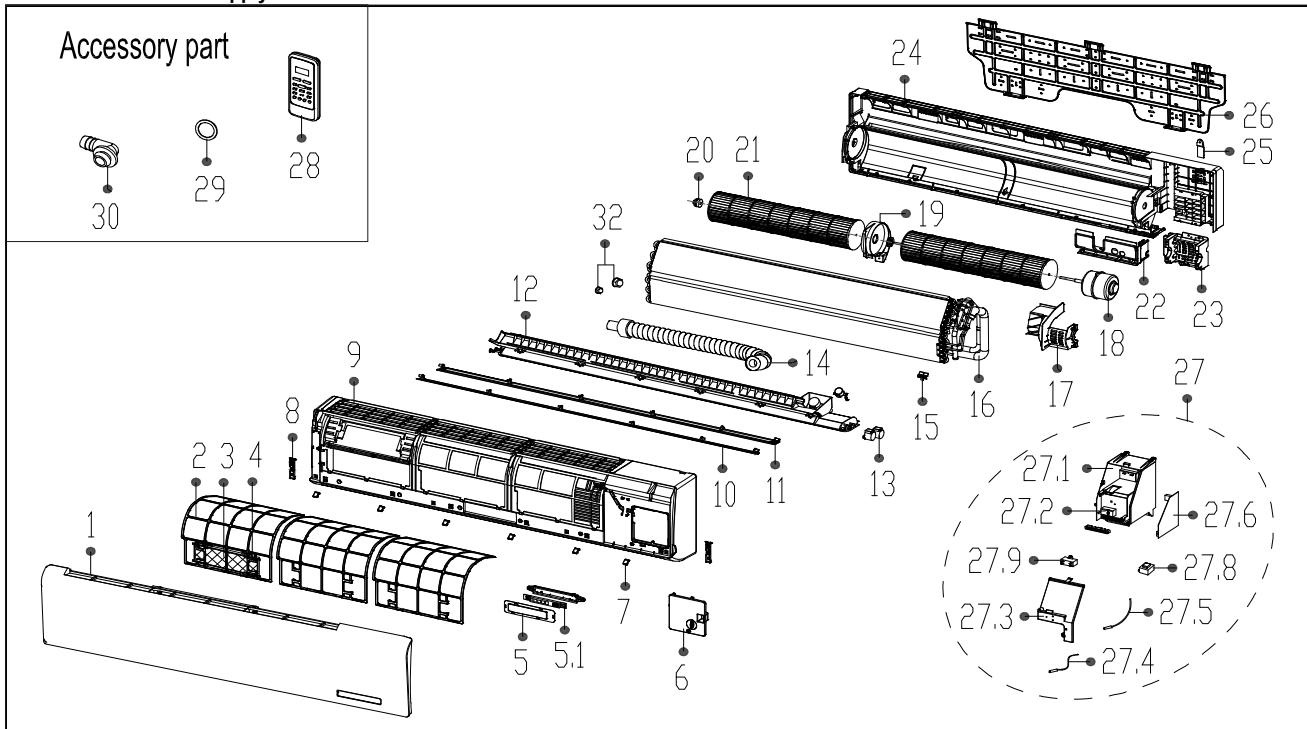
Serials: 50130090 and Later



No.	Part Name	Quantity	BOM Code	Bin Code	Remark
1	Ambient temperature sensor assembly	1	202301310075	3.60	
2	Rear net	1	2011481G0001	5.60	
3	Condenser assembly	1	201537990036	517.80	
4	Pipe temperature sensor assembly	1	202440500004	4.70	
5	Valve plate	1	201237300316	5.70	
6	Chassis assembly	1	201257090054	96.10	
7	Rear right clapboard assembly	1	201237890100	46.20	
8	Big handle	1	201237390104	5.70	
9	Water collector	1	201137390017	4.80	
10	Front right clapboard assembly	1	201248100389	44.30	
11	Front panel	1	201248100390	57.80	
12	Air outlet grille	1	201237890112	29.60	
13	Axial flow fan	1	201100300553	55.10	
14	Brushless DC Motor	1	202400300535	417.10	
15	Supporter assembly of fan motor	1	201257090067	54.60	
16	Rear supporter	1	201248100384	4.40	
17	Top cover assembly	1	201248100363	45.40	
18	Left supporter	1	201248100367	10.30	
19	Partition board assembly	1	201237790031	42.90	
20	Electronic control box assembly	1	203337890344	676.40	
21	Terminal board assembly	1	203337990161	48.50	
21.1	Wire joint	1	202301400256	22.90	
21.2	Terminal board	1	201237890064	4.50	
22	Liquid valve assembly	1	201637891328	0.00	
22.1	Liquid valve	1	201600700078	16.90	
23	4-ways valve assembly	1	201637891329	0.00	
23.1	Gas valve	1	201600720194	33.10	
23.2	4-ways valve	1	201600690011	100.10	
24	Compressor	1	201400600530	1316.50	
25	Crankcase electric heater	1	202403100501	24.40	
26	Discharge temperature sensor assembly	1	202301310068	7.10	
27	Cover of inductance	1	201248090001	11.50	
28	Reactor	1	202301050026	144.50	
28	Reactor	1	202301000819	57.20	
30	Clamp of front net	8	201135110801	0.20	
31	Capacitor of compressor	1	202401000078	27.10	
32	Capacitor clip	1	201200100002	0.30	

Model Number: WB024GMFI19HLD-V1
Product Code : 220033004380
Power Supply : 208-230V~ 60Hz 1Phase

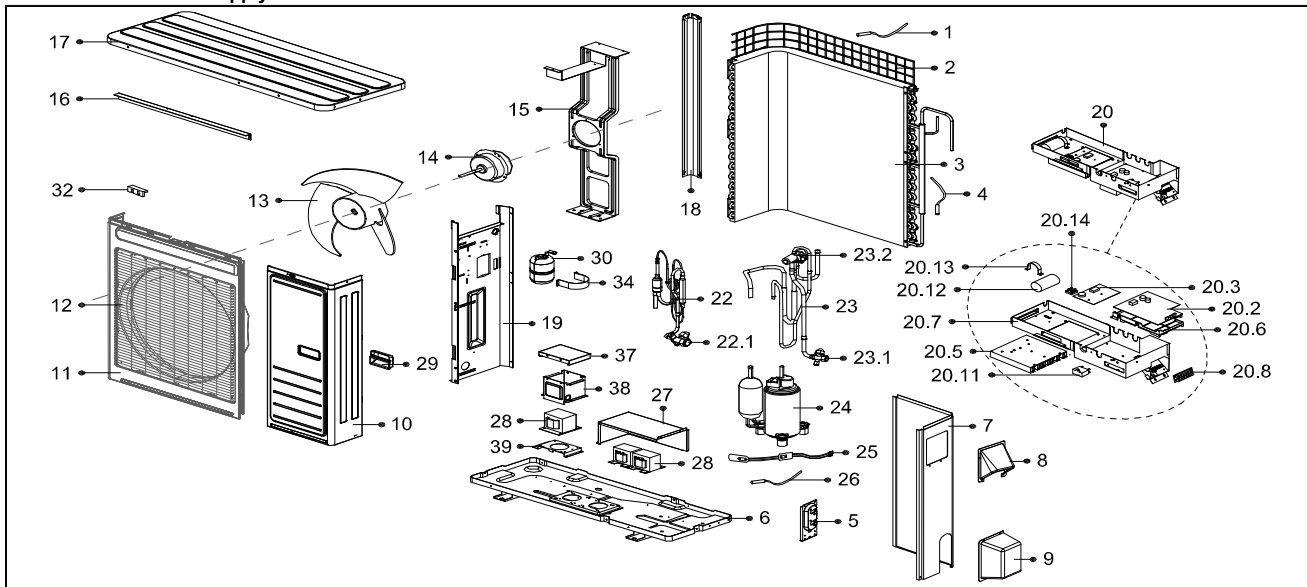
Serials 50130090 and Earlier



No.	Part Name	Quantity	BOM Code	Bin Code	Remark
1	Panel assembly	1	2011331A0619	124.70	
2	Air filter	3	201133190183	6.10	
3	Air freshening filter	1	201131410703	0.90	
4	Bracket of air filter	1	201132200713	0.50	
5	Display box assembly	1	2033323A1060	76.70	
5.1	Display board assembly	1	201319900960	75.70	
6	Cover of electrical equipment	1	201133190209	3.80	
7	Screw cap	6	201133190182	0.20	
8	Mandril of Panel	2	201132390476	0.30	
9	Panel frame assembly	1	201133190195	141.50	
10	Horizontal louver (above)	1	201133190192	16.30	
11	Horizontal louver (below)	1	201133190191	15.70	
12	Air outlet assembly	1	201133190194	98.30	
13	Louver motor	1	202400200137	12.60	
13	Louver motor	2	202400200136	29.10	
14	Drain hose	1	201101020038	3.70	
15	Fix clamp of temperature sensor	1	201102000305	0.20	
16	Evaporator assembly	1	201533190088	870.60	
17	Fan motor cover	1	201133190185	6.00	
18	Asynchronous motor	1	202400401186	222.20	
19	Fan holder assembly	1	201133190190	5.50	
20	Bearing base	1	202733190001	0.90	
20	Bearing base	1	202719900606	1.30	
21	Cross flow fan	1	201100200308	47.70	
21	Cross flow fan	1	201100200309	48.50	
22	Front cover of chassis	1	201133190187	8.90	
23	Base of fan motor	1	201133190186	7.70	
24	Chassis assembly	1	201133190208	199.40	
25	Pipe clamp board	2	201232800103	0.90	
26	Installation plate	1	201233190005	60.50	
27	Electronic control box assembly	1	203333090408	201.90	
27.1	Electronic control box	1	201133190200	28.40	
27.2	Wire joint	1	202301450128	5.70	
27.3	Cover of electronic control box	1	201133190184	6.60	
27.4	Ambient temperature sensor assembly	1	202301300210	3.70	
27.5	Pipe temperature sensor assembly	1	202301300080	4.30	
27.6	Indoor main control board assembly	1	201333090567	103.20	
27.8	Transformer	1	202300900167	38.10	
27.9	Fan motor capacitor	1	202401100353	5.00	
28	Remote Controller	1	203355091469	20.50	
29	Seal ring	1	202720090001	0.20	
30	Drain joint	1	201101020011	0.30	
32	Pipe Nut	1	201600330004	0.50	
32	Pipe Nut	1	201600330002	0.40	

Model Number: YN024GMFI19RPD-V1
Product Code : 220038003121
Power Supply : 208-230V~ 60Hz 1Phase

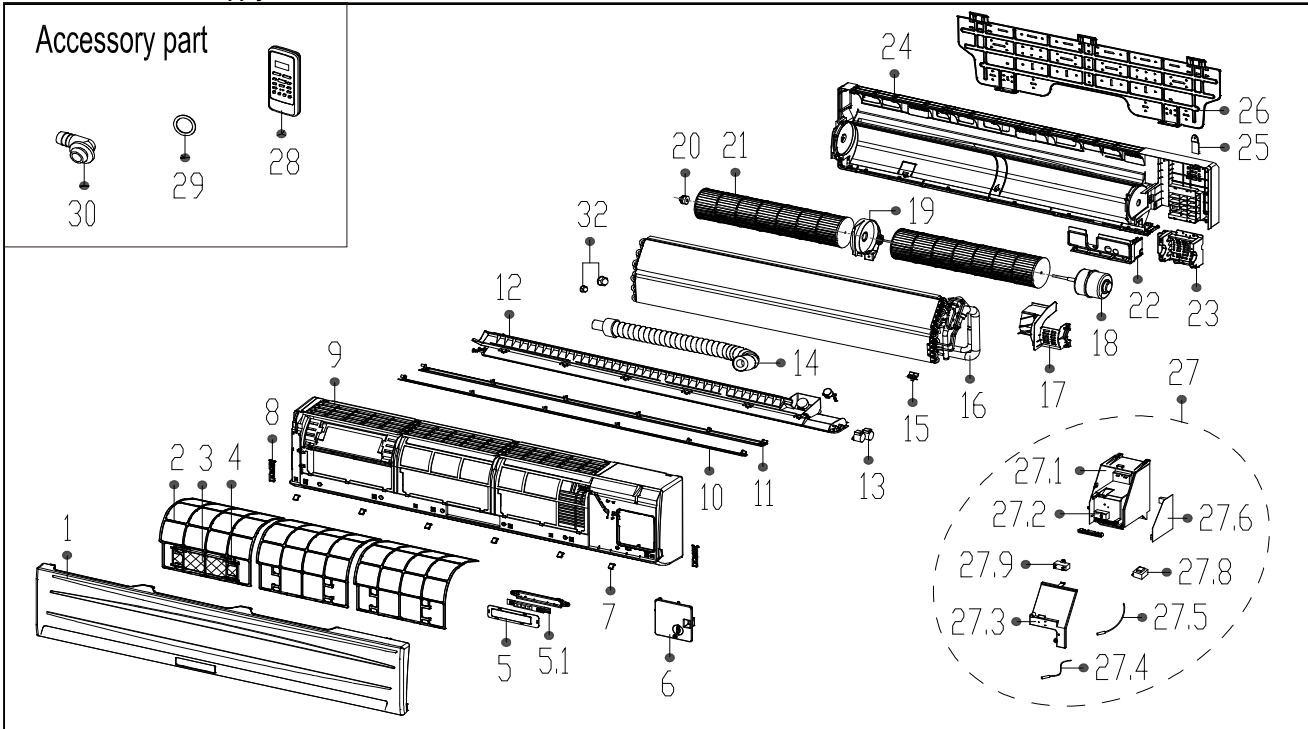
Serials: 50130090 and Earlier



No.	Part Name	Quantity	BOM Code	Bin Code	Remark
1	Ambient temperature sensor assembly	1	202301310075	3.60	
2	Rear net	1	2011482G0001	6.90	
3	Condenser assembly	1	201538090077	1031.40	
4	Pipe temperature sensor assembly	1	202301300111	5.20	
5	Valve plate	1	201248300316	7.00	
6	Chassis assembly	1	201257190085	112.80	
7	Rear right clapboard assembly	1	201238090067	61.40	
8	Big handle	1	201237390104	5.70	
9	Water collector	1	201138090002	0.00	
10	Front right clapboard assembly	1	201248200082	73.20	
11	Front panel	1	201248200103	102.00	
12	Air outlet grille	1	201238090068	30.70	
13	Axial flow fan	1	201100300042	41.90	
14	Asynchronous motor	1	202400410666	290.80	
15	Supporter assembly of fan motor	1	201238090007	69.00	
16	Rear supporter	1	201248200095	7.70	
17	Top cover assembly	1	201248300309	57.70	
18	Left supporter	1	201248400036	11.80	
19	Partition board assembly	1	201257390018	45.90	
20	Electronic control box assembly	1	203338190091	973.80	
20.2	Outdoor main control board assembly	1	201338190073	465.40	
20.3	Inverter control board assembly	1	201338190054	400.00	
20.5	Radiator	1	202301900091	90.10	
20.6	Support of electronic control box	1	201157390005	12.00	
20.7	Electronic installing box	1	201238190016	42.10	
20.8	Wire joint	1	202301470038	5.40	
20.8	Wire joint	1	202301450122	1.60	
20.11	Fan motor capacitor	1	202401190019	4.70	
20.12	Capacitor of compressor	1	202401000074	34.50	
20.13	Capacitor clip	1	201200100057	0.30	
20.14	Rectifier bridge	2	202300500328	15.70	
22	Liquid valve assembly	1	201638091004	36.90	
22.1	Liquid valve	1	201600740706	20.60	
23	4-ways valve assembly	1	201638190294	209.80	
23.1	Gas valve	1	201600720398	44.70	
23.2	4-ways valve	1	201600600119	100.50	
24	Compressor	1	201400601740	1312.10	
25	Crankcase electric heater	1	202403100503	27.50	
26	Discharge temperature sensor assembly	1	202448200000	11.40	
27	Cover of inductance	1	201248390003	10.10	
28	Reactor	1	202301000913	90.30	
28	Reactor	1	202301050027	169.80	
28	Reactor	1	202301050025	184.50	
29	Handle	2	201148700009	1.40	
30	Accumulator cylinder	1	201601000086	115.20	
32	Clamp of front net	8	201135110801	0.20	
34	Fix clamp of segregator	1	201245000901	3.10	
37	Inductance cover	1	201248390001	2.80	
38	Protecting board of inductance	1	201248390002	4.20	
39	Inductance holder	1	201250200305	3.30	

Model Number: WB024GMFI19HLD-V2
Product Code: 220033005560
Power Supply : 208-230V~ 60Hz 1Phase

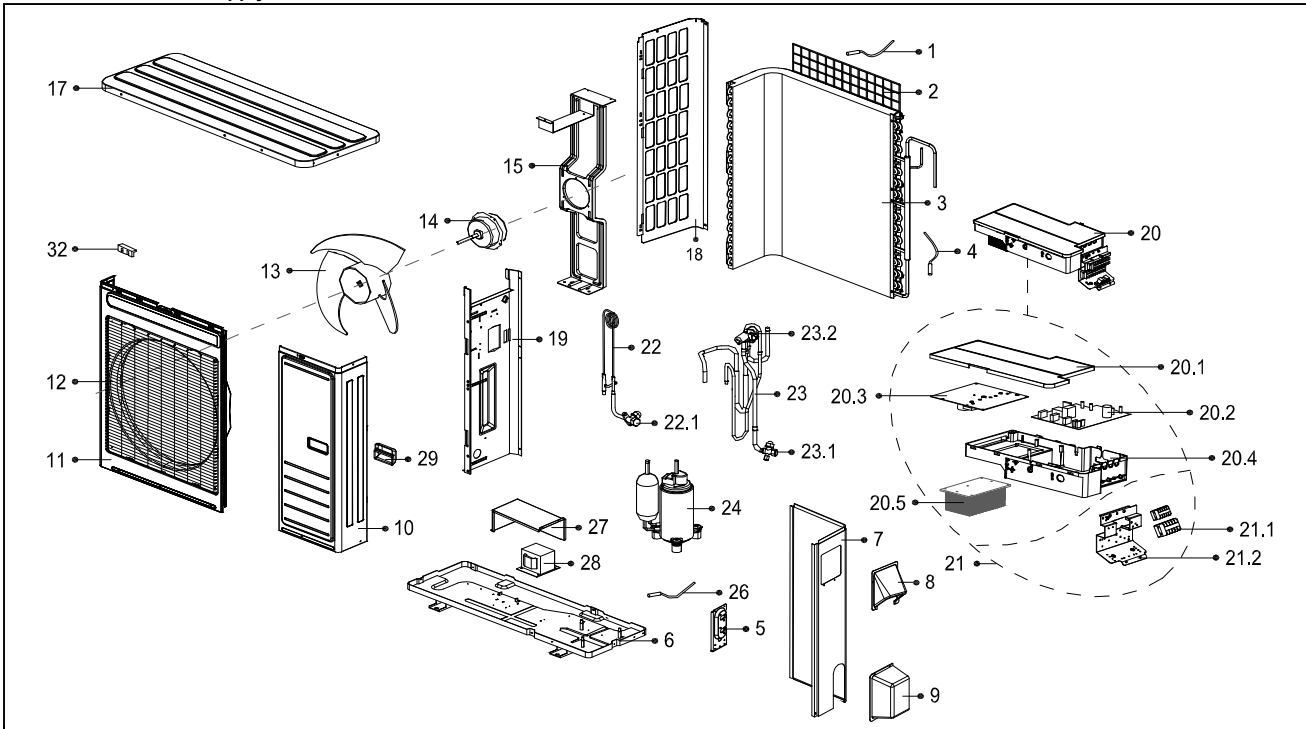
Serials: Post 50130090



No.	Part Name	Quantity	BOM Code	Bin Code	Remark
1	Panel assembly	1	201133190205	152	
2	Air filter	3	201133190183	6	
3	Air freshening filter	1	201131410703	1	
4	Bracket of air filter	1	201132200713	1	
5	Display box assembly	1	203333190104	79	
5.1	Display board assembly	1	201319902134	78	
6	Cover of electrical equipment	1	201133190209	4	
7	Screw cap	6	201133190182	0	
8	Mandril of Panel	2	201132390476	0	
9	Panel frame assembly	1	201133190195	142	
10	Horizontal louver (above)	1	201133190192	16	
11	Horizontal louver (below)	1	201133190191	16	
12	Air outlet assembly	1	201133190194	98	
13	Louver motor	1	202400200137	13	
13	Louver motor	2	202400200136	29	
14	Drain hose	1	201101020038	4	
15	Fix clamp of temperature sensor	1	201102000305	0	
16	Evaporator assembly	1	201533190088	871	
17	Fan motor cover	1	201133190185	6	
18	Asynchronous motor	1	202400401186	222	
19	Fan holder assembly	1	201133190190	6	
20	Bearing base	1	202733190001	1	
20	Bearing base	1	202719900606	1	
21	Cross flow fan	1	201100200308	48	
21	Cross flow fan	1	201100200309	49	
22	Front cover of chassis	1	201133190187	9	
23	Base of fan motor	1	201133190186	8	
24	Chassis assembly	1	201133190208	199	
25	Pipe clamp board	2	201232800103	1	
26	Installation plate	1	201233190005	61	
27	Electronic control box assembly	1	203333190147	0	
27.1	Electronic control box	1	201133190200	28	
27.2	Wire joint	1	202301450128	6	
27.3	Cover of electronic control box	1	201133190184	7	
27.4	Ambient temperature sensor assembly	1	202301300210	4	
27.5	Pipe temperature sensor assembly	1	202301300080	4	
27.6	Indoor main control board assembly	1	201333190181	0	
27.8	Transformer	1	202300900167	38	
27.9	Fan motor capacitor	1	202401100353	5	
28	Remote Controller	1	203355091469	21	
29	Seal ring	1	202720090001	0	
30	Drain joint	1	201101020011	0	
32	Pipe Nut	1	201600330004	1	
32	Pipe Nut	1	201600330002	0	

Model Number: YN024GLF19RPD-V2
Product Code : 220038004250
Power Supply : 208-230V~ 60Hz 1Phase

Serials: Post 50130090



No.	Part Name	Quantity	BOM Code	Bin Code	Remark
1	Ambient temperature sensor assembly	1	202301310075	4	
2	Rear net	1	201248200136	22	
3	Condenser assembly	1	201538090077	1031	
4	Pipe temperature sensor assembly	1	202301300111	5	
5	Valve plate	1	201248300316	7	
6	Chassis assembly	1	201257190085	113	
7	Rear right clapboard assembly	1	201238090067	61	
8	Big handle	1	201237390104	6	
9	Water collector	1	201138090002	6	
10	Front right clapboard assembly	1	201248200082	73	
11	Front panel	1	201248200132	95	
12	Air outlet grille	1	201238090068	31	
13	Axial flow fan	1	201100300527	62	
14	Brushless DC Motor	1	202400300047	437	
15	Supporter assembly of fan motor	1	201257190071	69	
17	Top cover assembly	1	201248300309	58	
18	Left supporter	1	201248400034	40	
19	Partition board assembly	1	201257190115	47	
20	Electronic control box assembly	1	203338090367	1054	
20.1	Cover of electronic control box	1	201157190011	25	
20.2	Outdoor main control board assembly	1	201337390275	0	
20.3	Inverter control board assembly	1	201357190124	680	
20.4	Electronic installing plate	1	201157190010	58	
20.5	Radiator	1	202301901173	80	
21	Terminal board assembly	1	203338090315	33	
21.1	Wire joint	1	202301400556	7	
21.2	Terminal board	1	201257190116	5	
22	Liquid valve assembly	1	201638091004	37	
22.1	Liquid valve	1	201600740706	21	
23	4-ways valve assembly	1	201638091121	221	
23.1	Gas valve	1	201600720398	45	
23.2	4-ways valve	1	201600600119	101	
24	Compressor	1	201400601740	1312	
26	Discharge temperature sensor assembly	1	202448200000	11	
27	Cover of inductance	1	201248390003	10	
28	Reactor	1	202301000943	108	
29	Handle	2	201148700009	1	
32	Clamp of front net	8	201135110801	0	