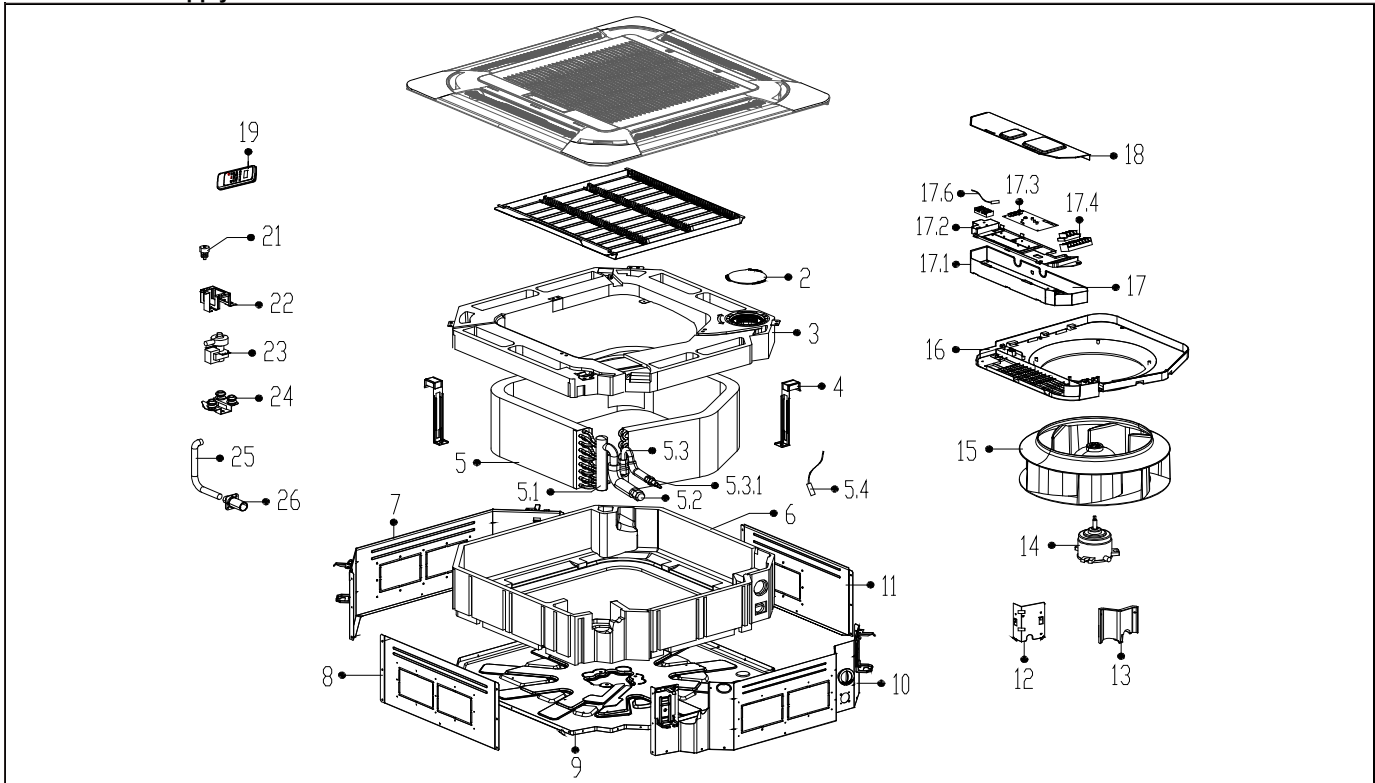
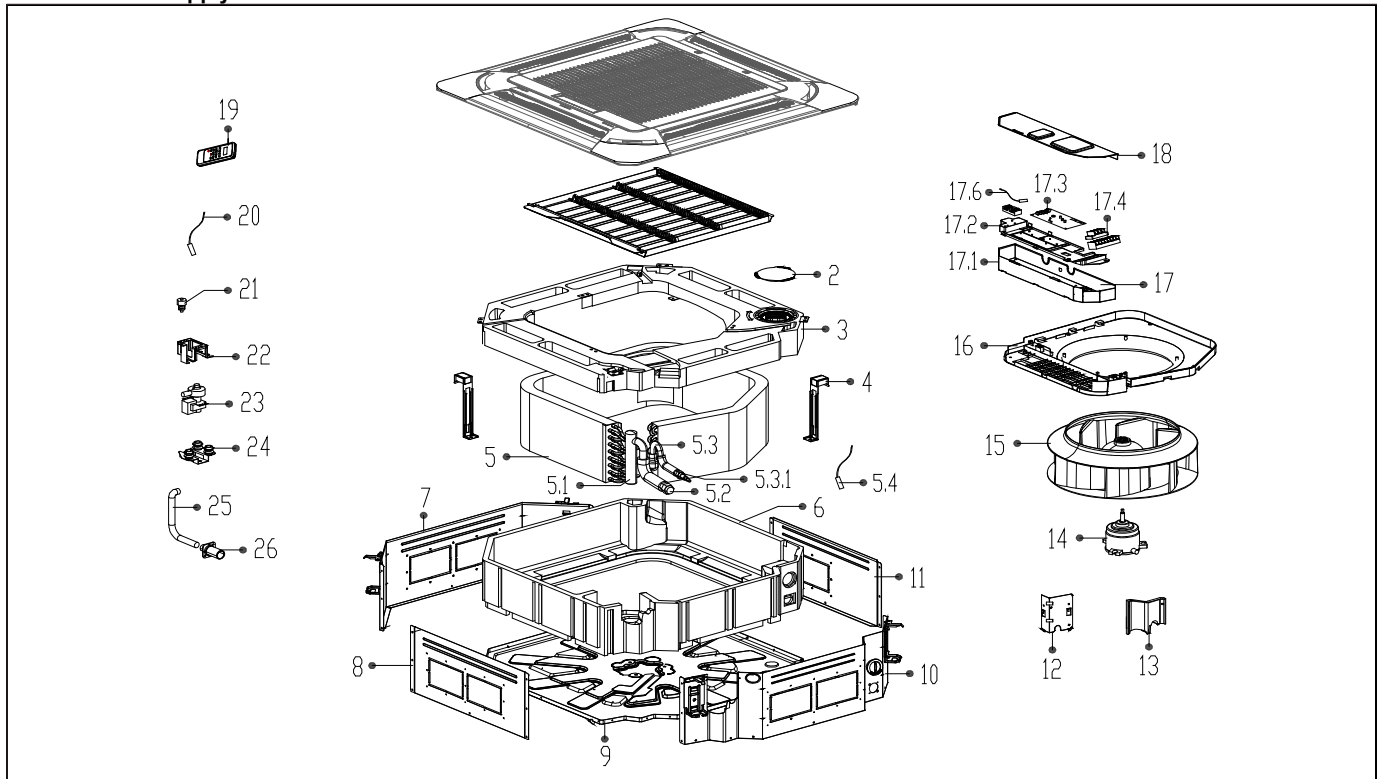


**Model Number** CB024GMF16MLD  
**ProdCode :** 22022511000469  
**Power Supply :** 230V~ 60Hz 1Phase



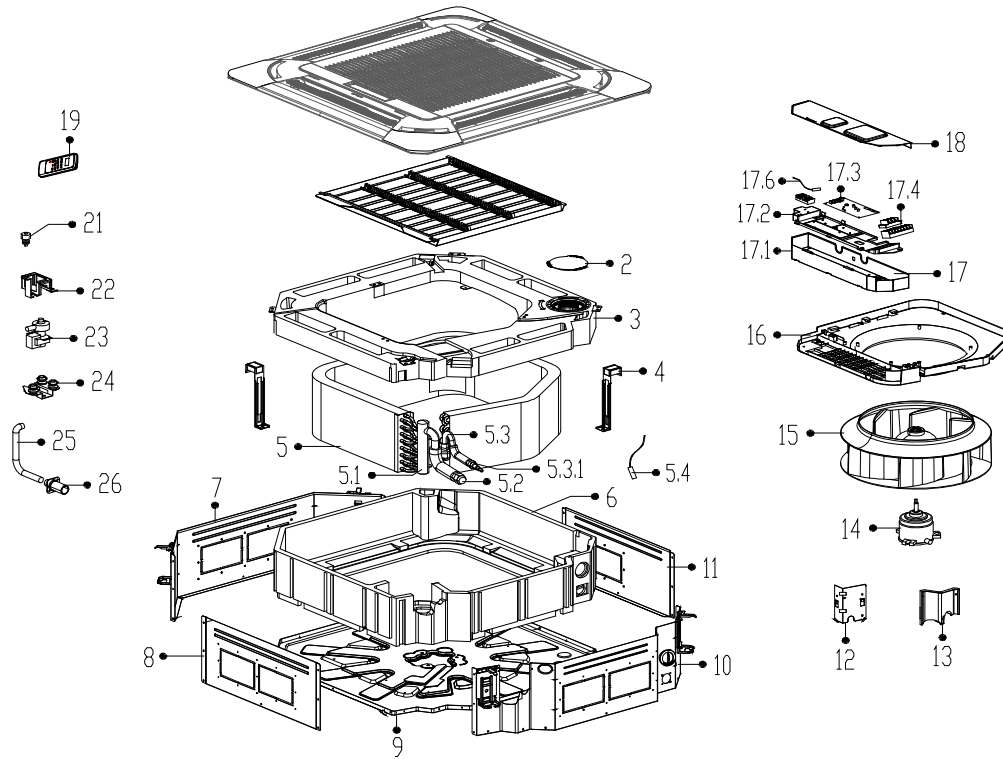
No.	Part Name	Quantity	BOM code	Bin Code	Remark
2	Water Tightness Testing Cover Subassembly	1.0	12122500000025	1	
3	Water receiver foam subassembly	1.0	12822500000066	231	
4	Evaporator Fixing hanger	2.0	12222500000084	2	
5	Evaporator assembly Gas valve assembly	1.0	15822500000013	399	
5.1	Outlet Pipes of Evaporator	1.0	15122500000242	44	
5.2	Brass Nut	1.0	15500406000003	8	
5.3	Input pipes of Evaporator assemblyJoint board	1.0	15122500000276	55	
5.3.1	Brass Nut	1.0	15500406000010	4	
5.4	Temperature Sensor	1.0	11201007000136	5	
5.4	Temperature Sensor	1.0	11201007000266	7	
6	Chassis Foam Subassembly	1.0	12822500000014	77	
7	Boarding Subassembly	1.0	12222500000159	30	
8	Boarding	1.0	12222500000232	12	
9	Chassis Welding Parts	1.0	12222500000122	106	
10	Boarding Subassembly	1.0	12222500000135	30	
11	Boarding	1.0	12222500000238	11	
12	Evaporator Intermediate Plate Subassembly	1.0	12222500000106	3	
13	Sealing board for Pipe Tie-in Subassembly	1.0	12122500000331	3	
14	Brushless DC Motor	1.0	11002015000173	401	
15	Centrifugal Fan Assembly	1.0	12100103000040	160	
16	Air Inducting Coil Subassembly	1.0	12122500000591	84	
17	Electrical Control Box Subassembly	1.0	17222500000028	334	
17.1	Electrical Control Box	1.0	12222500000119	14	
17.2	Wiring baseplate	1.0	12122500000027	10	
17.3	Indoor Main Control Board Subassembly	1.0	17122500000317	267	
17.4	Wire holder	1.0	17400401000006	7	
17.4	Wire holder	1.0	17400401000042	6	
17.6	Room Temperature Sensor	1.0	11201007000283	4	
18	Electrical Control Box Cover Subassembly	1.0	12222500000162	10	
19	Remote controller	1.0	17317000000099	50	
21	Water Level Sensor	1.0	11201005000006	16	
22	Water Pump installation bracket assembly	1.0	12222500000102		
23	Water Pump Subassembly	1.0	17400802000012	93	
24	Cushion of Water Pump	3.0	12622500000006	1	
25	Drain pipeExtended water pipe	1.0	12622500000013	15	

**Model Number** CB036GMF16MLD  
**ProdCode :** 22022511000366  
**Power Supply :** 230V~ 60Hz 1Phase



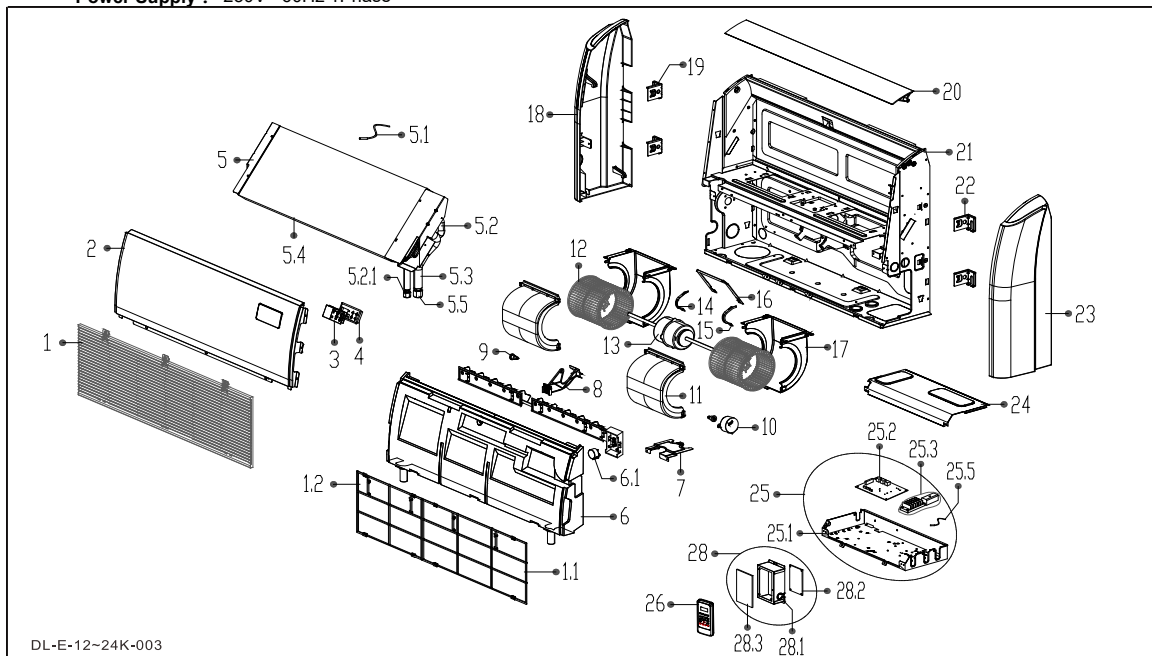
No.	Part Name	Quantity	BOM code	Bin Code	Remark
2	Water Tightness Testing Cover Subassembly	1.0	12122500000025	1	
3	Water receiver foam subassembly	1.0	12822500000059	231	
4	Evaporator Fixing hanger	2.0	12222500000089	2	
5	Evaporator assembly Gas valve assembly	1.0	15822500000052	700	
5.1	Outlet Pipes of Evaporator	1.0	15122500000232	53	
5.2	Brass Nut	1.0	15500406000003	8	
5.3	Input pipes of Evaporator assemblyJoint board	1.0	15122500000346	84	
5.3.1	Brass Nut	1.0	15500406000010	4	
5.4	Temperature Sensor	1.0	11201007000136	5	
6	Chassis Foam Subassembly	1.0	12822500000015	81	
7	Boarding Subassembly	1.0	12222500000144	33	
8	Boarding	1.0	12222500000230	13	
9	Chassis Welding Parts	1.0	12222500000122	106	
10	Boarding Subassembly	1.0	12222500000137	33	
11	Boarding	1.0	12222500000241	12	
12	Evaporator Intermediate Plate Subassembly	1.0	12222500000105	5	
13	Sealing board for Pipe Tie-in Subassembly	1.0	12122500000331	3	
14	Brushless DC Motor	1.0	11002015000281	431	
15	Centrifugal Fan SL	1.0	12100103000096	196	
16	Air Guide Coil	1.0	12122500000420	52	
17	Electrical Control Box Subassembly	1.0	17222500000119	334	
17.1	Electrical Control Box	1.0	12222500000119	14	
17.2	Wiring baseplate	1.0	12122500000027	10	
17.3	Indoor Main Control Board Subassembly	1.0	17122500000363	267	
17.4	Wire holder	1.0	17400401000006	7	
17.4	Wire holder	1.0	17400401000042	6	
17.6	Room Temperature Sensor	1.0	11201007000283	4	
18	Electrical Control Box Cover Subassembly	1.0	12222500000162	10	
19	Remote controller	1.0	17317000000099	50	
20	Temperature Sensor	1.0	11201007000266	7	
21	Water Level Sensor	1.0	112010050000006	16	
22	Water Pump installation bracket assembly	1.0	12222500001012		
23	Water Pump Subassembly	1.0	17400802000012	93	
24	Cushion of Water Pump	3.0	12622500000006	1	
25	Drain pipeExtended water pipe	1.0	12622500000013	15	
26	Extended Water Pipe	1.0	12100509000068	2	

**Model Number** CB048GMF16MLD  
**ProdCode :** 22022511000455  
**Power Supply :** 230V~ 60Hz 1Phase



No.	Part Name	Quantity	BOM code	Bin Code	Remark
2	Water Tightness Testing Cover Subassembly	1.0	12122500000025	1	
3	Water receiver foam subassembly	1.0	12822500000059	231	
4	Evaporator Fixing hanger	2.0	12222500000090	3	
5	Evaporator assembly Gas valve assembly	1.0	15822500000134	832	
5.1	Outlet Pipes of Evaporator	1.0	15122500000214	63	
5.2	Brass Nut	1.0	15500406000003	8	
5.3	Parts of Inlet Pipe of Evaporator	1.0	15122500000320	84	
5.3.1	Brass Nut	1.0	15500406000010	4	
5.4	Temperature Sensor	1.0	11201007000266	7	
5.4	Temperature Sensor	1.0	11201007000006	5	
6	Chassis Foam Subassembly	1.0	12822500000009	79	
7	Boarding Subassembly	1.0	12222500000133	36	
8	Boarding	1.0	12222500000240	15	
9	Chassis Welding Parts	1.0	12222500000122	106	
10	Boarding Subassembly	1.0	12222500000157	36	
11	Boarding	1.0	12222500000233	14	
12	Evaporator Intermediate Plate Subassembly	1.0	12222500000105	5	
13	Sealing board for Pipe Tie-in Subassembly	1.0	12122500000331	3	
14	Brushless DC Motor	1.0	11002015000281	431	
15	Centrifugal Fan SL	1.0	12100103000096	196	
16	Air Guide Coil	1.0	12122500000422	60	
17	Electrical Control Box Subassembly	1.0	17222500000119	334	
17.1	Electrical Control Box	1.0	12222500000119	14	
17.2	Wiring baseplate	1.0	12122500000027	10	
17.3	Indoor Main Control Board Subassembly	1.0	17122500000363	267	
17.4	Wire holder	1.0	17400401000006	7	
17.4	Wire holder	1.0	17400401000042	6	
17.6	Room Temperature Sensor	1.0	11201007000283	4	
18	Electrical Control Box Cover Subassembly	1.0	12222500000162	10	
19	Remote controller	1.0	17317000000099	50	
21	Water Level Sensor	1.0	11201005000006	16	
22	Water Pump installation bracket assembly	1.0	12222500001012		
23	Water Pump Subassembly	1.0	17400802000012	93	
24	Cushion of Water Pump	3.0	12622500000006	1	
25	Drain pipeExtended water pipe	1.0	12622500000013	15	
26	Extended Water Pipe	1.0	12100509000068	2	

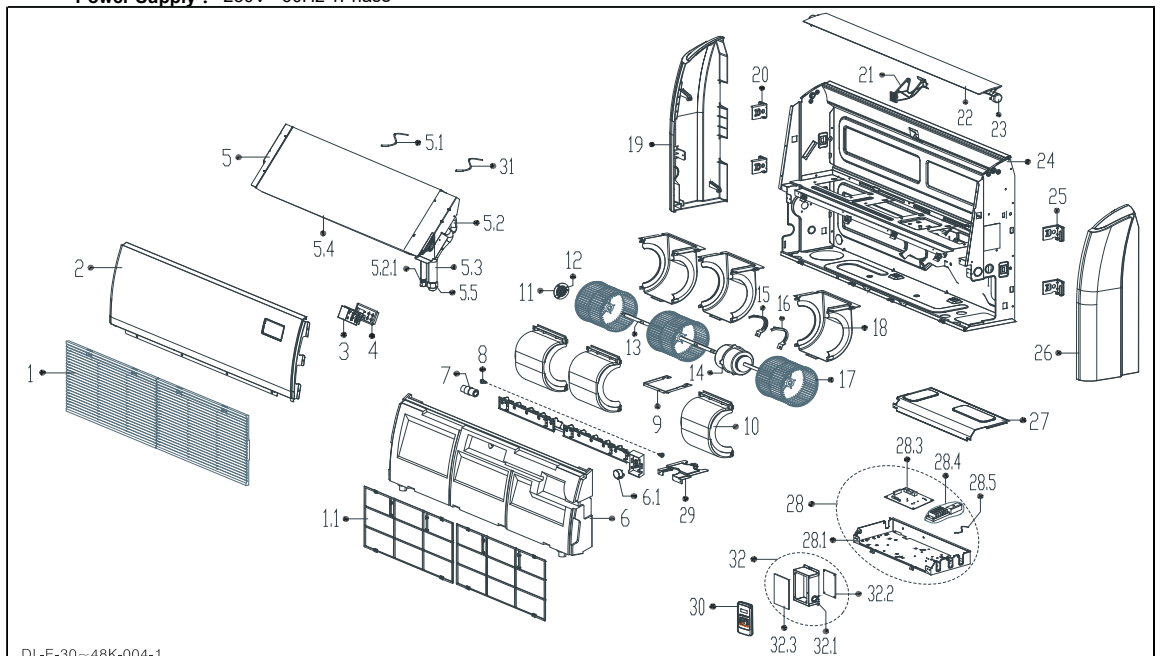
**Model Number** UB024GMFI16MLD  
**ProdCode :** 22022711000280  
**Power Supply :** 230V~ 60Hz 1Phase



DL-E-12-24K-003

No.	Part Name	Quantity	BOM code	Bin Code	Remark
1	Air Returning Grille Subassembly	1.0	12122700000100	43	
1.1	Air Filter	1.0	12100204000718	7	
1.2	Air Filter	1.0	12100204000719	6	
2	Top cover	1.0	12222700000096	65	
3	VLED Display Module	1.0	17122700000005	21	
4	Display panel box	1.0	12122700000044	1	
5	Evaporator assembly Gas valve assembly	1.0	15822700000192	518	
5.1	Temperature Sensor	1.0	11201007000266	7	
5.1	Temperature Sensor	1.0	11201007000006	5	
5.2	Input pipes of Evaporator assemblyJoint board	1.0	15122700000228	87	
5.2.1	Brass Nut	1.0	15500406000010	4	
5.3	Outlet Pipes of Evaporator	1.0	15122700000185	92	
5.4	Evaporator	1.0	15822700000203	446	
5.5	Brass Nut	1.0	15500406000003	8	
6	Water receiver subassembly	1.0	12822700000010	166	
6.1	stepper motor	1.0	11002010000034	18	
7	Connecting pipe clamp	1.0	12222700000054	2	
8	Guide holder	1.0	12122700000150	3	
9	Anti-power Shaft	2.0	12122000000344	0	
10	stepper motor	1.0	11002010000057	44	
11	Upper Volute	2.0	12122700000047	11	
12	Centrifugal Fan	2.0	12100103000002	29	
13	Brushless DC Motor	1.0	11002015000043	314	
14	Right Gland of Motor Bush	1.0	12222500000255	2	
15	Left Gland of Motor Bush	1.0	12222500000253	2	
16	Motor Boarding	1.0	12222300000230	3	
17	Lower Scroll	2.0	12122700000111	11	
18	Cover plate (right)	1.0	12122700000087	31	
19	Installation Right Hanger	2.0	12222700000018	2	
20	Subassembly of Air Guide Strip	1.0	12122700000061	37	
21	Chassis Assembly	1.0	12222700000059	239	
22	Installation Left Hanger	2.0	12222700000016	2	
23	Cover plate (left)	1.0	12122700000093	31	
24	E-Part Box Cover Subassembly	1.0	12222700000058	14	
25	Electrical Control Box Subassembly	1.0	17222700000048	353	
25.1	Welding Parts of Electrical Control Box	1.0	12222700000083	21	
25.2	Indoor Main Control Board Subassembly	1.0	17122700000051	289	
25.3	Wire holder	1.0	17400401000042	6	
25.3	Wire holder	1.0	17400401000069	5	
25.5	Room Temperature Sensor	1.0	11201007000073	3	
26	Remote controller	1.0	17317000000099	50	
28	Electrical Control Box Subassembly	1.0	17222700000159	218	
28.1	Electrical Control Box	1.0	12223000000052	5	
28.2	Inverter Module Subassembly (Sticker)	1.0	17122000008562	188	
28.3	Radiator	1.0	11203803000154	22	

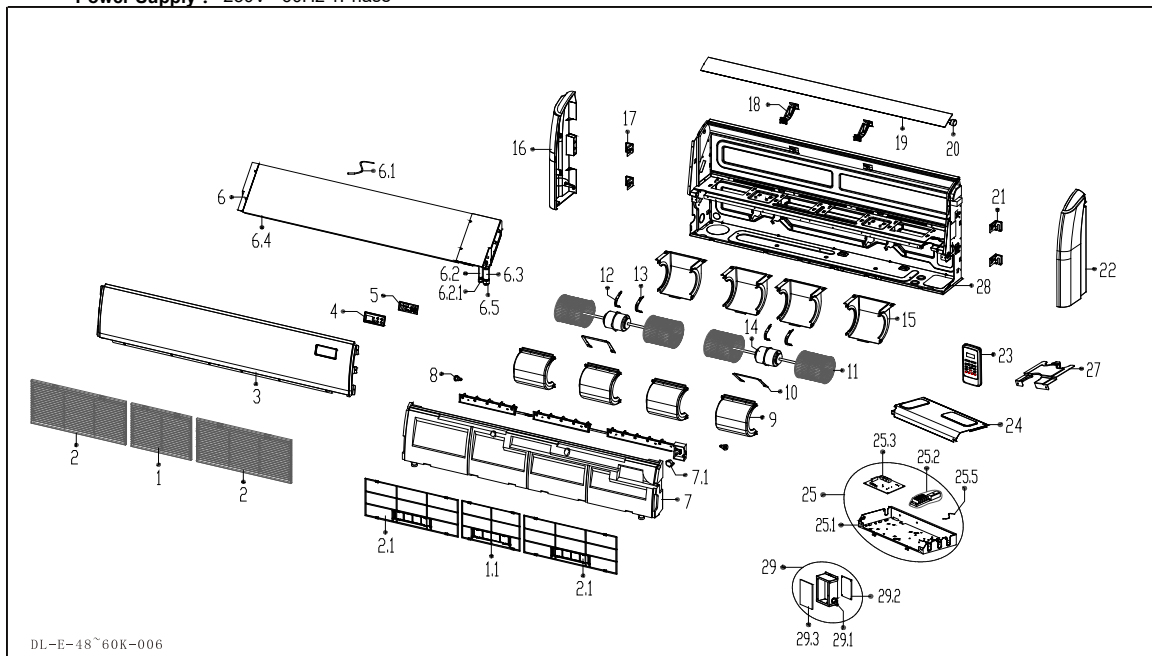
**Model Number** UB036GMFI16MLD  
**ProdCode :** 22022711000281  
**Power Supply :** 230V~ 60Hz 1Phase



DL-E-30-48K-004-1

No.	Part Name	Quantity	BOM code	Bin Code	Remark
1	Air Returning Grille Subassembly	2.0	12122700000096	27	
1.1	Air Filter	1.0	12100204000718	7	
2	Top cover	1.0	12222700000094	77	
3	VLED Display Module	1.0	17122700000005	21	
4	Display panel box	1.0	12122700000044	1	
5	Evaporator assembly Gas valve assembly	1.0	15822700000060	578	
5.1	Temperature Sensor	1.0	11201007000266	7	
5.1	Temperature Sensor	1.0	11201007000006	5	
5.2	Input pipes of Evaporator assemblyJoint board	1.0	15122700000338	71	
5.2.1	Brass Nut	1.0	15500406000010	4	
5.3	Outlet Pipes of Evaporator	1.0	15122700000198	56	
5.4	Evaporator	1.0	15822700000210	442	
5.5	Brass Nut	1.0	15500406000003	8	
6	Water receiver subassembly	1.0	12822700000011	189	
6.1	stepper motor	1.0	11002010000034	18	
7	Coupling	1.0	12923000000004	22	
8	Anti-power Shaft	2.0	12122000000344	0	
9	Motor Boarding	1.0	12222300000230	3	
10	Upper Volute	3.0	12122700000047	11	
11	Fixed plate of bearing	1.0	122220000003769	1	
12	Bearing pedestal	1.0	12622000000013	1	
13	Intermediate Shaft	1.0	12922700000004	28	
14	Brushless DC Motor	1.0	11002015000297	325	
15	Right Gland of Motor Bush	1.0	12222500000255	2	
16	Left Gland of Motor Bush	1.0	12222500000253	2	
17	Centrifugal Fan	3.0	12100103000002	29	
18	Lower Scroll	3.0	12122700000111	11	
19	Cover plate (right)	1.0	12122700000087	31	
20	Installation Right Hanger	2.0	12222700000018	2	
21	Guide holder	1.0	12122700000150	3	
22	Subassembly of Air Guide Strip	1.0	12122700000058	45	
23	stepper motor	1.0	11002010000057	44	
24	Chassis Assembly	1.0	12222700000063	278	
25	Installation Left Hanger	2.0	12222700000016	2	
26	Cover plate (left)	1.0	12122700000093	31	
27	E-Part Box Cover Subassembly	1.0	12222700000058	14	
28	Electrical Control Box Subassembly	1.0	17222700000033	358	
28.1	Welding Parts of Electrical Control Box	1.0	12222700000083	21	
28.3	Indoor Main Control Board Subassembly	1.0	17122700000146	291	
28.4	Wire holder	1.0	17400401000042	6	
28.4	Wire holder	1.0	17400401000006	7	
28.5	Room Temperature Sensor	1.0	11201007000073	3	
29	Connecting pipe clamp	1.0	12222700000054	2	
30	Remote controller	1.0	17317000000099	50	
32	Electrical Control Box Subassembly	1.0	17222700000162	222	
32.1	Electrical Control Box	1.0	12223000000052	5	
32.2	Inverter Module Subassembly (Sticker)	1.0	17122000008498	191	
32.3	Radiator	1.0	11203803000154	22	

**Model Number** UB048GMFI16MLD  
**ProdCode :** 22022711000319  
**Power Supply :** 230V~ 60Hz 1Phase

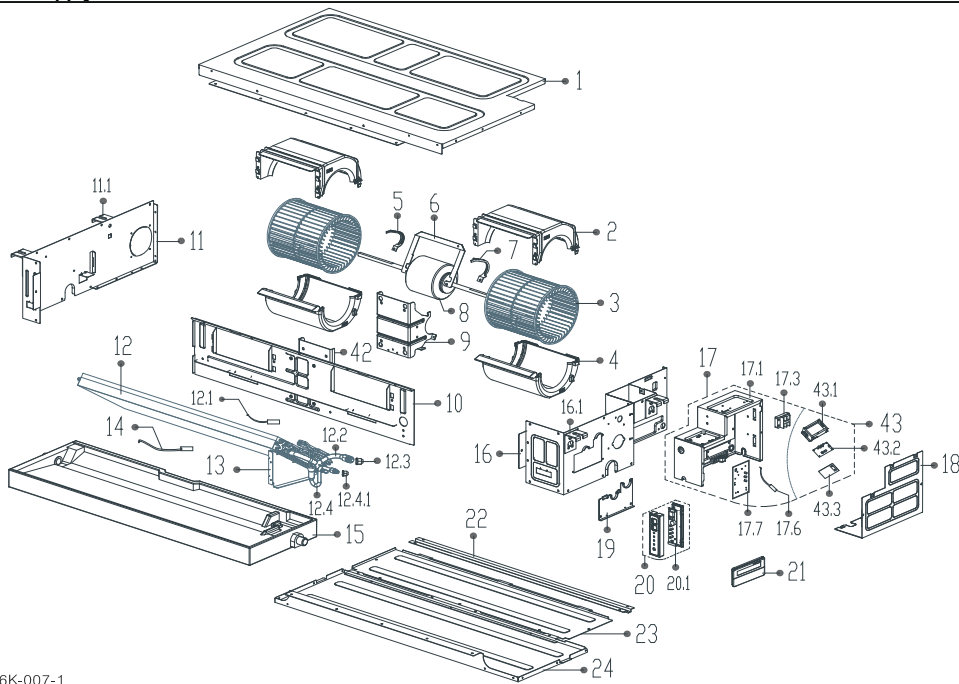


DL-E-48~60K-006

No.	Part Name	Quantity	BOM code	Bin Code	Remark
1	Air Returning Grille Subassembly	1.0	12122700000103	20	
1.1	Air Filter	1.0	12100204000719	6	
2	Air Returning Grille Subassembly	2.0	12122700000096	27	
2.1	Air Filter	1.0	12100204000718	7	
3	Top cover	1.0	12222700000093	102	
4	Display panel box	1.0	12122700000044	1	
5	VLED Display Module	1.0	17122700000005	21	
6	Evaporator assembly Gas valve assembly	1.0	15822700000136	699	
6.1	Temperature Sensor	1.0	11201007000006	5	
6.1	Temperature Sensor	1.0	11201007000266	7	
6.2	Input pipes of Evaporator assemblyJoint board	1.0	15122700000414	95	
6.2.1	Brass Nut	1.0	15500406000010	4	
6.3	Outlet Pipes of Evaporator	1.0	15122700000186	91	
6.4	Evaporator	1.0	15822700000197	512	
6.5	Brass Nut	1.0	15500406000003	8	
7	Water receiver subassembly	1.0	12822700000009	224	
7.1	stepper motor	1.0	11002010000034	18	
8	Anti-power Shaft	2.0	12122000000344	0	
9	Upper Volute	4.0	12122700000047	11	
10	Motor Boarding	2.0	12222300000230	3	
11	Centrifugal Fan	4.0	12100103000002	29	
12	Right Gland of Motor Bush	2.0	12222500000255	2	
13	Left Gland of Motor Bush	2.0	12222500000253	2	
14	Brushless DC Motor	2.0	11002015000344	360	
15	Lower Scroll	4.0	12122700000111	11	
16	Cover plate (right)	1.0	12122700000087	31	
17	Installation Right Hanger	2.0	12222700000018	2	
18	Guide holder	2.0	12122700000150	3	
19	Subassembly of Air Guide Strip	1.0	12122700000059	60	
20	stepper motor	1.0	11002010000057	44	
21	Installation Left Hanger	2.0	12222700000016	2	
22	Cover plate (left)	1.0	12122700000093	31	
23	Remote controller	1.0	17317000000099	50	
24	E-Part Box Cover Subassembly	1.0	12222700000058	14	
25	Electrical Control Box Subassembly	1.0	17222700000135	397	
25.1	Welding Parts of Electrical Control Box	1.0	12222700000083	21	
25.2	Wire holder	1.0	17400401000042	6	
25.2	Wire holder	1.0	17400401000006	7	
25.3	Indoor Main Control Board Subassembly	1.0	17122700000076	331	
25.5	Room Temperature Sensor	1.0	11201007000073	3	
27	Connecting pipe clamp	1.0	12222700000054	2	
28	Chassis Assembly	1.0	12222700000065	351	
29	Electrical Control Box Subassembly	2.0	17222700000162	222	
29.1	Electrical Control Box	1.0	12223000000052	5	
29.2	Inverter Module Subassembly (Sticker)	1.0	171220000008498	191	
29.3	Radiator	1.0	11203803000154	22	



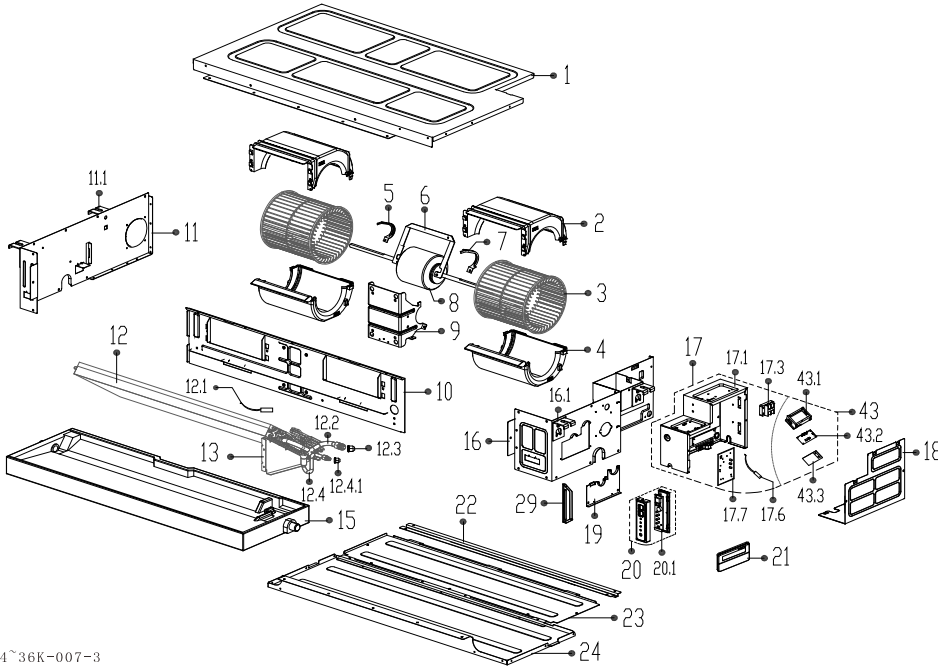
**Model Number** RB024GMFI16MLD  
**ProdCode :** 22023011000401  
**Power Supply :** 230V~ 60Hz 1Phase



T2-A5-24~36K-007-1

No.	Part Name	Quantity	BOM code	Bin Code	Remark
1	Chassis Assembly	1.0	12223000000515	98	
2	Upper Volute	2.0	12123000000024	16	
3	Centrifugal Fan	2.0	12100103000079	59	
4	Lower Volute	2.0	12123000000022	15	
5	Left Gland of Motor Bush	1.0	12222500000253	2	
6	Motor Boarding	1.0	12223000000537	3	
7	Right Gland of Motor Bush	1.0	12222500000255	2	
8	Brushless DC Motor	1.0	11002015000344	360	
9	Fan Motor Holder	1.0	12223000000559	18	
10	Components of middle beam	1.0	12223000000233	53	
11	Left panel Subassembly	1.0	12223000000122	45	
11.1	Installation Hanger	2.0	12223000000418	4	
12	Evaporator assembly Gas valve assembly	1.0	15823000000114	476	
12.1	Temperature Sensor	1.0	11201007000136	5	
12.2	Outlet Pipe Subassembly	1.0	15123000000280	62	
12.3	Brass Nut	1.0	15500406000003	8	
12.4	Inlet Pipe Subassembly	1.0	15123000000340	88	
12.4.1	Brass Nut	1.0	15500406000010	4	
13	Right Supporting Plate Subassembly of Evaporator	1.0	12223000000291	8	
14	Temperature Sensor	1.0	11201007000266	7	
15	Water receiver assembly	1.0	12823000000001	112	
16	Parts fn Right Side Plate	1.0	12223000000079	54	
16.1	Installation Hanger	2.0	12223000000418	4	
17	Electrical Control Box Subassembly	1.0	17223000000220	390	
17.1	Welding Parts of Electrical Control Box	1.0	12223000000046	29	
17.3	Wire holder	1.0	17400401000069	5	
17.6	Room Temperature Sensor	1.0	11201007000073	3	
17.7	Indoor Main Control Board Subassembly	1.0	17123000000156	341	
18	Electrical Control Box Cover	1.0	12223000000060	10	
19	Pressing Plate Subassembly of Tube(RoHS)	1.0	12223000000524	2	
20	Display box assembly	1.0	17223000000003	33	
20.1	Display board assembly	1.0	17123000000096	28	
21	Wire Controller	1.0	17317100000022	105	
22	Rear Transverse Beam	1.0	12223000000263	6	
23	Rear Cover Plate	1.0	12223000000217	30	
24	Top Cover Subassembly	1.0	12223000000199	48	
42	Motor Installing Foundation Subassembly	1.0	12223000000547	11	
43	Electrical Control Box Subassembly	1.0	17222700000162	222	
43.1	Electrical Control Box	1.0	12223000000052	5	
43.2	Inverter Module Subassembly (Sticker)	1.0	17122000008498	191	
43.3	Radiator	1.0	11203803000154	22	

**Model Number** RB036GMFI16MLD  
**ProdCode :** 22023011000403  
**Power Supply :** 230V~ 60Hz 1Phase

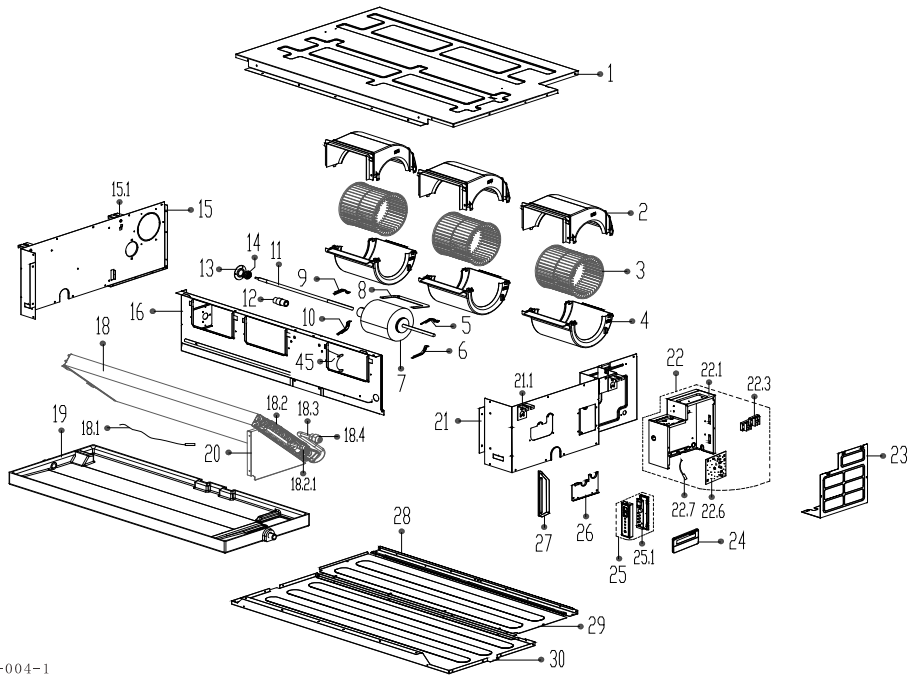


T2-A5-24~36K-007-3

No.	Part Name	Quantity	BOM code	Bin Code	Remark
1	Chassis Assembly	1.0	12223000000498	231	
2	Upper Volute	2.0	12123000000024	16	
3	Centrifugal Fan	2.0	12100103000079	59	
4	Lower Volute	2.0	12123000000022	15	
5	Left Gland of Motor Bush	1.0	12222500000253	2	
6	Motor Boarding	1.0	12223000000537	3	
7	Right Gland of Motor Bush	1.0	12222500000255	2	
8	Brushless DC Motor	1.0	11002015000091	382	
9	Fan Motor Holder	1.0	12223000000559	18	
10	Components of middle beam	1.0	12223000000229	83	
11	Left panel Subassembly	1.0	12223000000123	71	
11.1	Installation Hanger	2.0	12223000000418	4	
12	Evaporator assembly Gas valve assembly	1.0	15823000000027	717	
12.1	Temperature Sensor	1.0	11201007000136	5	
12.1	Temperature Sensor	1.0	11201007000266	7	
12.2	Outlet Pipes of Evaporator	1.0	15123000000302	52	
12.3	Brass Nut	1.0	15500406000003	8	
12.4	Input pipes of Evaporator assembly	1.0	15123000000410	82	
12.4.1	Brass Nut	1.0	15500406000010	4	
13	Right Supporting Plate Subassembly of Evaporator	1.0	12223000000287	13	
15	Water receiver assembly	1.0	12823000000004	166	
16	Parts fn Right Side Plate	1.0	12223000000082	79	
16.1	Installation Hanger	2.0	12223000000418	4	
17	Electrical Control Box Subassembly	1.0	17223000000114	392	
17.1	Welding Parts of Electrical Control Box	1.0	12223000000046	29	
17.3	Wire holder	1.0	17400401000006	7	
17.6	Room Temperature Sensor	1.0	11201007000073	3	
17.7	Indoor Main Control Board Subassembly	1.0	17123000000058	341	
18	Electrical Control Box Cover	1.0	12223000000060	10	
19	Pressing Plate Subassembly of Tube(RoHS)	1.0	12223000000524	2	
20	Display box assembly	1.0	17223000000003	33	
20.1	Display board assembly	1.0	17123000000096	28	
21	Wire Controller	1.0	17317100000022	105	
22	Rear Transverse Beam	1.0	12223000000267	15	
23	Rear Cover Plate	1.0	12223000000213	39	
24	Top Cover Subassembly	1.0	12223000000201	107	
29	Reinforced Plate of Right Side Plate	1.0	12223000000110	2	
43	Electrical Control Box Subassembly	1.0	17223000000083	219	
43.1	Electrical Control Box	1.0	12223000000052	5	
43.2	Inverter Module Subassembly (Sticker)	1.0	171220000008553	191	
43.3	Radiator	1.0	11203803000154	22	



**Model Number** RB048GMFI16MLD  
**ProdCode :** 22023011000487  
**Power Supply :** 230V~ 60Hz 1Phase



T2-A5-42~60K-004-1

No.	Part Name	Quantity	BOM code	Bin Code	Remark
1	Chassis Assembly	1.0	12223000000521	181	
2	Upper Volute	3.0	12123000000024	16	
3	Centrifugal Fan	3.0	12100103000079	59	
4	Lower Volute	3.0	12123000000022	15	
5	Upper Box Cover of Motor	1.0	122230000000531	1	
6	Lower Gland of Motor	1.0	122230000000529	1	
7	Brushless DC Motor	1.0	11002015000280	735	
8	Motor Boarding	1.0	122230000000535	4	
9	Upper Box Cover of Motor	1.0	122230000000532	1	
10	Lower Gland of Motor	1.0	122230000000530	1	
11	Intermediate Shaft	1.0	129230000000001	29	
12	Coupling	1.0	129230000000004	22	
13	Fixed plate of bearing	1.0	122220000003769	1	
14	Bearing pedestal	1.0	126220000000013	1	
15	Left panel Subassembly	1.0	122230000000121	67	
15.1	Installation Hanger	2.0	122230000000418	4	
16	Components of middle beam	1.0	122230000000238	90	
18	Evaporator assembly Gas valve assembly	1.0	158230000000036	832	
18.1	Temperature Sensor	1.0	11201007000266	7	
18.1	Temperature Sensor	1.0	11201007000136	5	
18.2	Inlet Pipe Subassembly	1.0	151230000000338	50	
18.2.1	Brass Nut	1.0	15500406000010	4	
18.3	Outlet Pipes of Evaporator	1.0	151230000000299	63	
18.4	Brass Nut	1.0	155004060000003	8	
19	Water receiver assembly	1.0	128230000000002	139	
20	Right Supporting Plate Subassembly of Evaporator	1.0	122230000000288	18	
21	Parts in Right Side Plate	1.0	122230000000075	73	
21.1	Installation Hanger	2.0	122230000000418	4	
22	Electrical Control Box Subassembly	1.0	172230000000114	392	
22.1	Welding Parts of Electrical Control Box	1.0	122230000000046	29	
22.3	Wire holder	1.0	17400401000006	7	
22.6	Indoor Main Control Board Subassembly	1.0	171230000000058	341	
22.7	Room Temperature Sensor	1.0	112010070000073	3	
23	Electrical Control Box Cover	1.0	122230000000060	10	
24	Wire Controller	1.0	173171000000022	105	
25	Display box assembly	1.0	172230000000003	33	
25.1	Display board assembly	1.0	171230000000096	28	
26	Pressing Plate Subassembly of Tube(RoHS)	1.0	1222300000000524	2	
27	Reinforced Plate of Right Side Plate	1.0	122230000000112	4	
28	Rear Transverse Beam	1.0	122230000000265	15	
29	Rear Cover Plate	1.0	122230000000212	47	
30	Top Cover Subassembly	1.0	122230000000198	103	
45	Fan Motor Holder	1.0	122230000000560	21	